

RESOLUTION NO. \_\_\_\_\_

**A RESOLUTION AUTHORIZING THE MAYOR AND CITY CLERK TO ENTER INTO A MULTI-YEAR AGREEMENT WITH CDW GOVERNMENT LLC FOR DATA STORAGE SERVICES FOR THE NORTH LITTLE ROCK IT DEPARTMENT; AND FOR OTHER PURPOSES.**

WHEREAS, Ark. Code Ann. § 19-11-249 allows the City to procure commodities and services through cooperative purchasing agreements without formal bidding procedures; and

WHEREAS, the City is a member of TIPS/TAPS (The Interlocal Purchasing System and Texas-Arkansas Purchasing System), an organization utilized by municipalities, state agencies and schools for cooperative purchasing in lieu of independent bidding; and

WHEREAS, the North Little Rock IT Department has utilized TIPS/TAPS to search for a data storage system for the City, and wishes to enter into a multi-year agreement with CDW Government LLC for on-site data storage with additional online storage as needed (see Proposal attached hereto as Exhibit A);and

WHEREAS, it is in the best interests of the City to enter into a multi-year agreement with CDW Government LLC for the data storage services.

NOW, THEREFORE, BE IT RESOLVED BY THE CITY COUNCIL OF THE CITY OF NORTH LITTLE ROCK, ARKANSAS:

SECTION 1: That the Mayor and City Clerk are hereby authorized to enter into a multi-year agreement with CDW Government LLC for the services described in Exhibit A for no more than five (5) years; with all contracts/agreements to be reviewed and approved by the City Attorney prior to execution.

SECTION 2: That the cost of the services shall be included in the yearly IT Department Budget.

SECTION 3: That the provisions of this Resolution are hereby declared to be severable, and if any section, phrase or provision shall be declared or held invalid, such invalidity shall not affect the remainder of the sections, phrases or provisions.

SECTION 4: That this Resolution shall be in full force and effect from and after its passage and approval.

PASSED:

APPROVED:

\_\_\_\_\_

\_\_\_\_\_

Mayor Terry C. Hartwick

SPONSOR:

ATTEST:

TERRY C. HARTWICK  
Mayor Terry C. Hartwick

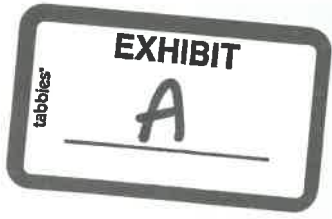
Diane Whitbey, City Clerk

APPROVED AS TO FORM:

Amy Beckman Fields  
Amy Beckman Fields, City Attorney

PREPARED BY THE OFFICE OF THE CITY ATTORNEY/kt

FILED <u>10:50</u> A.M. _____ P.M.
By <u>A. Fields</u>
DATE <u>5.21.24</u>
<b>Diane Whitbey, City Clerk and Collector</b> <b>North Little Rock, Arkansas</b>
RECEIVED BY <u>S. Ussery</u>

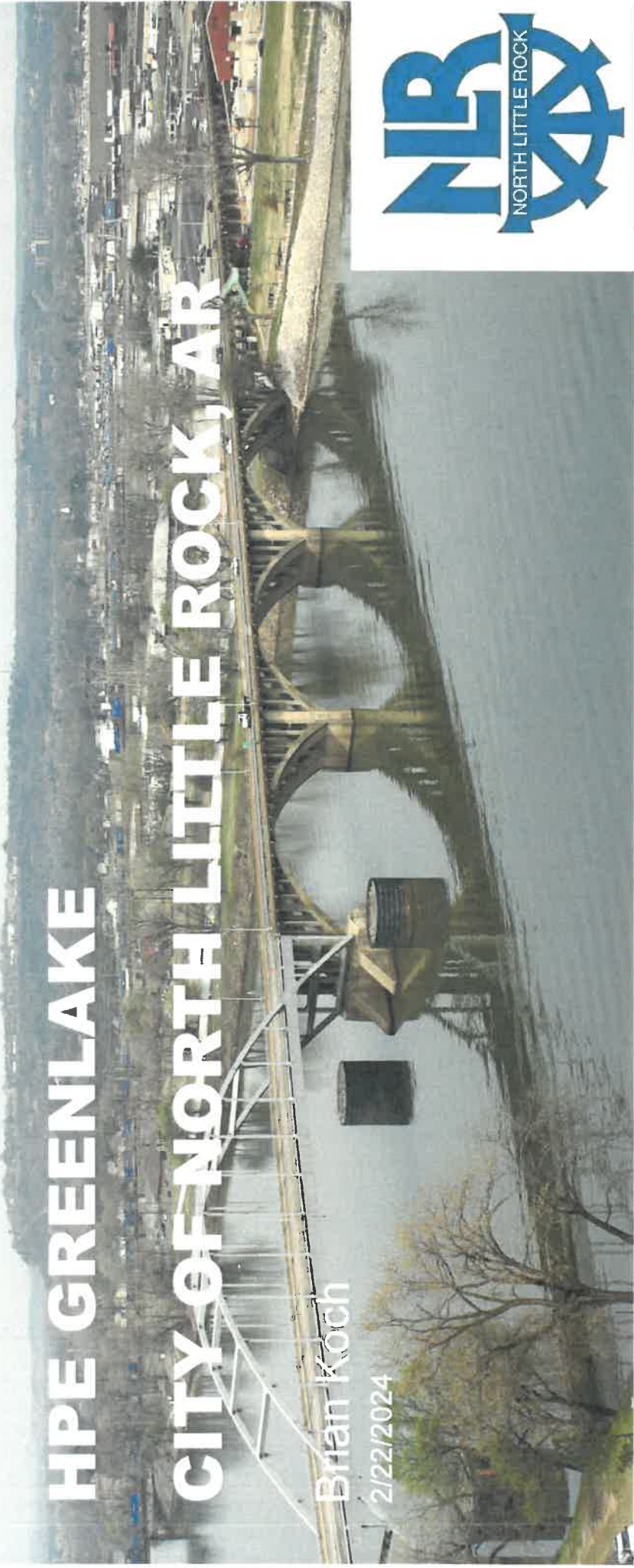


Hewlett Packard  
Enterprise

# HPE GREENLAKE CITY OF NORTH LITTLE ROCK, AR

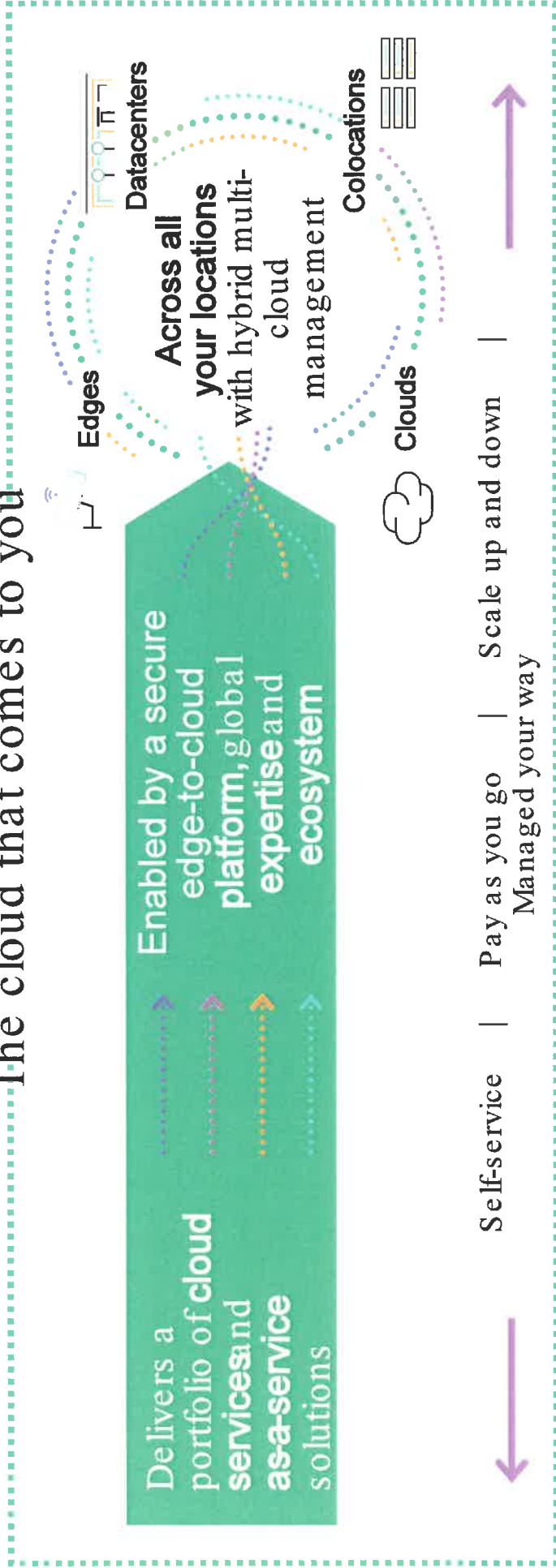
Brian Koch

2/22/2024



# HPE GreenLake

The cloud that comes to you

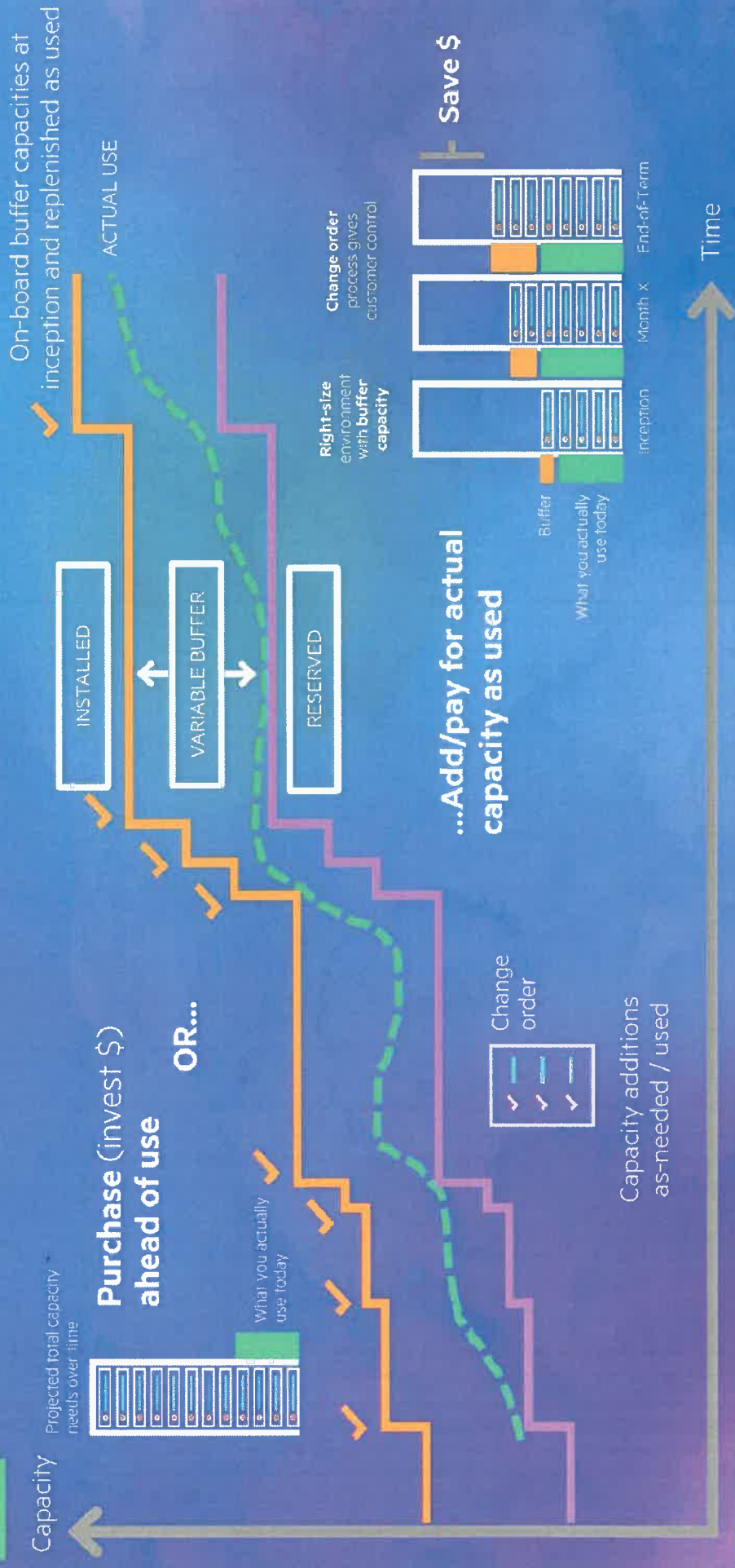


# HPE Greenlake delivers hybrid cloud by design

- 1 Familiar cloud and as-a-service experience through a common platform
- 2 Multi-vendor, AI-powered, automated hybrid cloud operations
- 3 Portfolio of cloud services (IaaS, SaaS) and flexible as-a-service solutions with hybrid cloud capabilities
- 4 Broad ecosystem, hybrid cloud advisory, management expertise

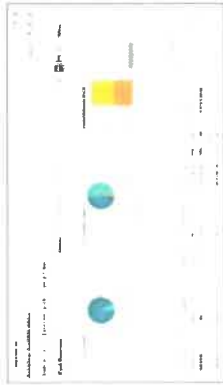


# HPE GreenLake continually aligns usage and cost



# THE HPE GREENLAKE EXPERIENCE

## Simple, unified, secure



Capacity ready ahead of demand with built-in buffer

Hybrid cloud consumption analytics and controls to optimize spend

### Financial

### Sustainability



Sustainability monitoring and dashboard

## HPE GreenLake

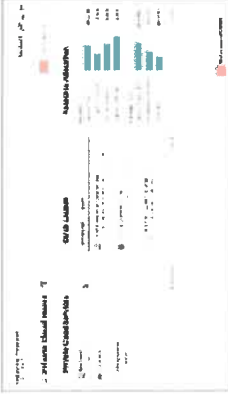
### edge-to-cloud platform

The screenshot shows the 'Manage Account' interface with sections for 'GreenLake Cloud Platform', 'Account Details', 'APIs & Integrations', and 'HPE Account Type'.

### Technical

Simple and fast provisioning for developers to spin up resources

Access to global, hybrid data from edge to cloud



### Operational

Hybrid observability  
Intelligent automation  
Service-centric AIOps



## Expertise and Ecosystem

Advisory & Professional Services | Managed Services | Marketplace | ISVs, colos



# HPE SERVICES COMPLETE CARE

## Experience Levels—Standard, Basic, Entry

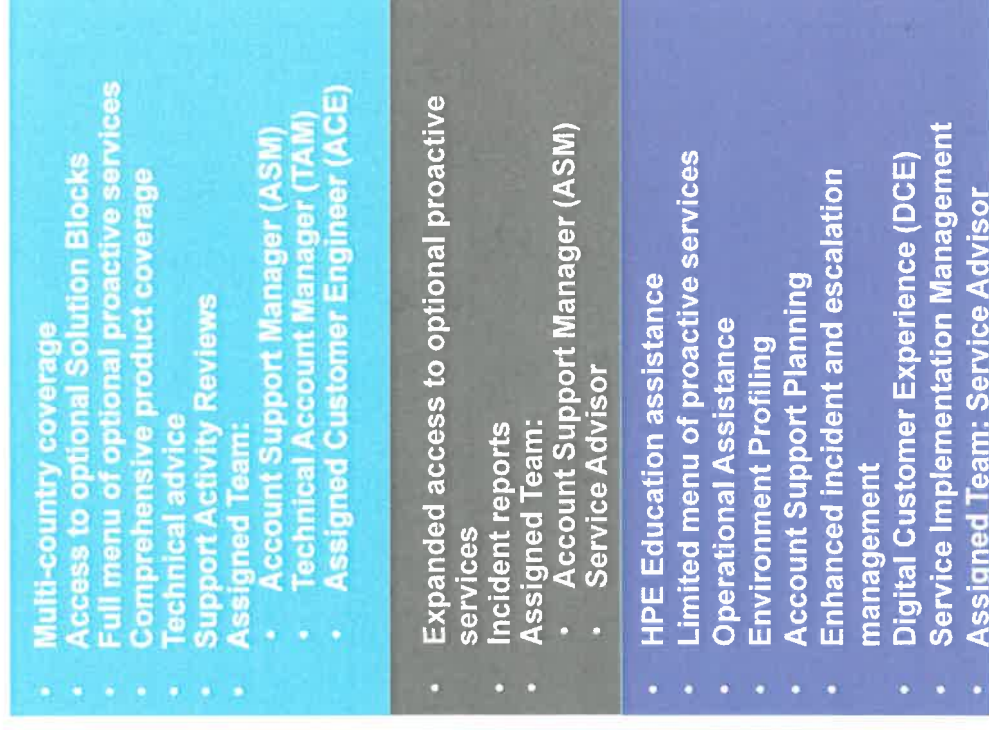
Introducing 3 experience level options for broader market reach

Standard designed for majority of customers, with Entry and Basic providing options for smaller customers

Experiences differentiated by

- Composition of the assigned team
- Type, breadth and depth of deliverables
- Frequency of deliverables

All levels available through **Partner Packs** and **SGA** based deals



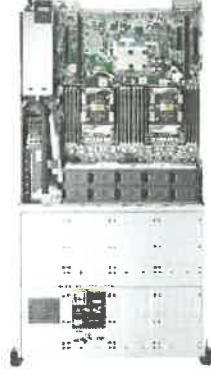


# HPE GreenLake Proactive Services Comparison

Core Services Tool Availability	Lite		Entry		Standard	
	Integrated Quoting	Service Advisor (SA)	Integrated Quoting Quick Quote Flex Quoting	Service Advisor (SA)	Integrated Quoting Quick Quote Flex Quoting	Account Support Manager (ASM) Technical Account Manager (TSM) Assigned Customer Engineer (ACE)
HPE Delivery Team		Service Advisor (SA)		Service Advisor (SA)		Account Support Manager (ASM) Technical Account Manager (TSM) Assigned Customer Engineer (ACE)
Account Support Planning						
Service Planning and Review Enhanced Incident Management (support call prioritization)		Annual		Semi-Annual		Quarterly
HPE Education Planning and Assistance						
Operational Assistance		(minimal)		(limited)		
Technical Advice				Via credits purchase (GLFQ only)		
Optional Proactive Technical Services				Limited Menu (Flex Quoting only)		Full Menu
Support Activity Review Dedicated Customer Satisfaction Mgr. (HW break fix)						Quarterly
Proactive Monitoring (Technical Account Manager)						
GreenLake Management Services (operational services)				Optional in Flex Quoting		Optional in Flex Quoting
Multi-Country Service Deployment						
GreenLake Change Order Management and Implementation						
GreenLake Central Implementation and Onboarding		Self-serve with limited assistance				
Transition Management (GreenLake service implementation management)						
Capacity Utilization Report		Self-serve (available on GLC)		Monthly		Monthly
Capacity Planning Meeting Other Restrictions***		Semi-Annual -Smaller Instance solutions, -2 technologies max -(DL and ML server count for 2)		Quarterly -Quick Quote -Remote Service Advisor		Monthly Custom or IQ - Dedicated support team



# SOLUTION OVERVIEW



Config Name	Greenlake Qumulo	Quantity
Billing Tier 1	Apollo for Qumulo	
Product Number	Description	Quantity
S0D91A	HPE Apollo 4200 Gen10 Plus 90TB Plus 25Gb TAA-compliant Node for Qumulo	4
P53557-K21	HPE 10TB SATA 6G Business Critical 7.2K LFF LP 1-year Warranty 512e ISE Multi-Vendor HDD	2
P64999-K21	HPE 800GB NVMe Gen4 Mainstream Performance Mixed Use SFF BC U.3 Static V2 Multi-Vendor SSD	1
P47817-K21	HPE 240GB SATA 6G Read Intensive M.2 Multi-Vendor SSD	1
HA113A1	HPE Installation Service	1
HA113A1#58Y	HPE Apollo 4200 Install SVC	4
HU4B2A5	HPE 5Y Tech Care Basic Service	1
HU4B2A5#ZK3	HPE Apollo 4200 Gen10+ Support	4
JL294A	HPE Networking X240 25G SFP28 to SFP28 1m DAC Cable	4
844477-821	HPE 25Gb SFP28 to SFP28 3m Direct Attach Copper Cable	4



# PRICING OVERVIEW STANDARD SERVICES

## Price Band:

Configuration	Billing Tier	UoM	Band 1	Band 2	Band 3	Band 4
Greenlake Qumulo	Apollo for Qumulo	Qumulo Data TB	160 - 359	360 - 519	520 - 679	680
		Volume	\$33.08	\$29.64	\$26.20	\$22.74
		Price				

## Committed Pricing without Growth:

	Reserve Pricing
Monthly:	\$5,292.80
Annually:	\$63,513.60
Total Contract (5yrs):	\$317,568.00



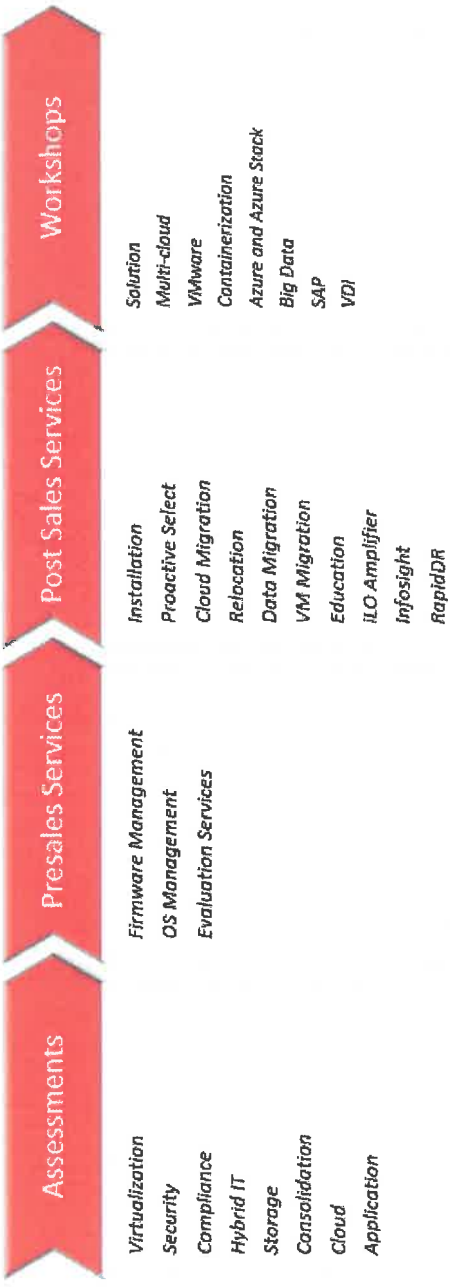


# CDW Badged Services - Delivery Capability

## Engineering Expertise in:

Nimble	SimpliVity	Synergy	Primera	3Par	Blades	ProLiant	StoreOnce	Composable Fabric
StoreFabric	Networking	Integrity Servers	StoreEasy	MSA	OneView	dHCI	EdgeLine	HC250/HC350

# Service Solutions:



THANK YOU



**Hewlett Packard  
Enterprise**