

Commerce Department  
Mary Beth Bowman, Director  
Amy Smith, Assistant Director for Procurement  
Crystal Willis, Administrative Secretary/  
Purchasing Assistant



PO Box 5757  
North Little Rock, AR 72119  
120 Main Street,  
North Little Rock, AR 72114  
501-975-8881 Phone  
501-975-8885 Fax  
[www.nlr.ar.gov](http://www.nlr.ar.gov)

## INVITATION TO BID

Bid Number: 17-3436 Date Issued: February 8, 2017  
Date & Time Bid Opening: Thursday, February 23, 2017 @ 10:45 am

### FORKLIFT FOR THE NORTH LITTLE ROCK ELECTRIC DEPARTMENT

Total cost: \$ \_\_\_\_\_

Manufacturer: \_\_\_\_\_

Delivery: \_\_\_\_\_

Trade- In: \$ \_\_\_\_\_

For technical questions and/or comments, contact Ron Osborne at 501-519-7980.

Unless otherwise stated, the use of a manufacturer's name and/or product number is for descriptive purposes and establishing general quality levels only. They are not intended to be restrictive. Bidders are required to state exactly what they intend to furnish, otherwise, it is fully understood that they shall furnish all items stated.

If you are obtaining this bid from our website, please be reminded that addendums may occur. It is therefore advisable that you review our listings for attachments including any changes to the bid.

The City of North Little Rock encourages participation of small, minority, and woman own business enterprises in the procurement of goods, services, professional services, and construction, either as a general contractor or sub-contractor. It is further requested that whenever possible, majority contractors who require sub-contractors, seek qualified small, minority, and woman businesses to partner with them.

---

#### EXECUTION OF BID

Upon signing this page, the organization certifies that they have read and agree to the requirements set forth in this bid including conditions set forth and pertinent information requests.

Name of Firm: \_\_\_\_\_ Phone No.: \_\_\_\_\_

Tax Identification No.: \_\_\_\_\_

Business Address: \_\_\_\_\_

Signature of Authorized Person: \_\_\_\_\_

Title: \_\_\_\_\_ Date: \_\_\_\_\_

**UNSIGNED BID COVER SHEET WILL BE REJECTED.**

## **Forklift Bid Specifications City of North Little Rock, AR**

### **Standard Features – Equivalent or Exceed**

- Diesel Powered Pneumatic Tire Forklift
- 15,500lb Basic Capacity at a 24 Inch Load Center
- 2 Stage Mast, 157 Inch Maximum Fork Height
- Hook Type Pallet Forks 72 Inches Long
- Cowl Mounted Control Levers with 4-Way Hydraulics
- 75 Inch Wide Fork Carriage with Integral Side Shift and Fork Positioner
- Solid Pneumatic Dual Drive Tires 8.25x15
- Solid Pneumatic Steer Tires 8.25x15
- Two Speed Powershift Transmission
- Head Lights
- Back-up Alarm
- Strobe Light

**TERMS AND STANDARD CONDITIONS  
CITY OF NORTH LITTLE ROCK, ARKANSAS**

PLEASE READ CAREFULLY

1. When submitting an "Invitation to Bid," the bidder warrants that the commodities covered by the bid shall be free from defects in material and workmanship under normal use and service. In addition, bidder must deliver new commodities of the latest design and model, unless otherwise specified in the "Invitation to Bid."
2. Prices quoted are to be net process, and when an error is made in extending total prices, the City may accept the bid for the lesser amount whether reflected by extension or by the correct multiple of the unit price.
3. Discounts offered will be taken when the City qualifies for such. The beginning date for computing discounts will be the date of invoice or the date of delivery and acceptance, whichever is later.
4. When bidding other than the brand and/or model specified in the "Invitation to Bid," the brand and/or model number must be stated by that item in the "Invitation to Bid," and descriptive literature be submitted with the bid.
5. The City reserves the right to reject any and all bids.
6. The Purchasing office reserves the right to award items, all or none, or by line item(s).
7. Quality, time and probability of performance may be factors in making an award.
8. Bid quotes submitted will remain firm for 30 calendar days from bid opening date; however, the prices may remain firm for a longer period of time if mutually agreeable between bidder and the Commerce Department..
9. Bidder must submit a completed signed copy of the front page of the "Invitation to Bid" and must submit any other information required in the "Invitation to Bid."
10. In the event a contract is entered into pursuant to the "Invitation to Bid," the bidder shall not discriminate against any qualified employee or qualified applicant for employment because of race, sex, color, creed, national origin or ancestry. The bidder must include in any and all subcontracts a provision similar to the above.
11. Sales or use tax is not to be included in the bid price, but is to be added by the vendor to the invoice billing to the City. Although use tax is not to be included in this bid, vendors are to register and pay tax direct to the Arkansas State Revenue Department.
12. Prices quoted shall be "Free on Board" (F.O.B.) to destination at designated facility in North Little Rock. Charges may not be added after the bid is opened.
13. In the event of two or more identical low bids, the contract may be awarded arbitrarily or for any reason to any of such bidders or split in any proportion between them at the discretion of the Commerce Department.
14. Specifications furnished with this Invitation are intended to establish a desired quality or performance level, or other minimum dimensions and capacities, which will provide the best product available at the lowest possible price. Other than designated brands and/or models approved as equal to designated products shall receive an equal consideration.
15. Samples of items when required, must be furnished free, and, if not called for within 30 days from date of bid opening, will become property of the City.
16. Bids will not be considered if they are: 1. Submitted after the bid's opening time. 2. Submitted electronically or faxed (unless authorized by Purchasing Agent).
17. Guarantees and warranties should be submitted with the bid, as they may be a consideration in making an award.

**TERMS AND STANDARD CONDITIONS (CONTINUED)**  
**CITY OF NORTH LITTLE ROCK, ARKANSAS**

PLEASE READ CAREFULLY

**18. CONSTRUCTION**

- A. Contractor is to supply the City with evidence of having and maintaining proper and complete insurance, specifically Workman's Compensation Insurance in accordance with the laws of the State of Arkansas, Public Liability and Property Damage. All premiums and cost shall be paid by the Contractor. In no way will the City be responsible in case of accident.
- B. When noted, a Certified check or bid bond in the amount of 5% of total bid shall accompany bid.
- C. A Performance Bond equaling the total amount of any bid exceeding \$10,000.00 must be provided for any contract for the repair, alteration or erection of any public building, public structure or public improvement (pursuant to Act 351 or 1953 as amended by Act 539 of 1979).
19. **LIQUIDATED DAMAGES** - Liquidated damages shall be assessed beginning on the first day following the maximum delivery or completion time entered on this bid form and/or provided for by the plans and specifications.
20. **AMBIGUITY IN BID** - Any ambiguity in any bid as the result of omission, error, lack of clarity or non-compliance by the bidder with specifications, instructions, and all conditions of bidding shall be construed in the light most favorable to the City.
21. The bid number should be stated on the face of the sealed bid envelope. If it is not, the envelope will have to be opened to identify.
22. Whenever a bid is sought seeking a source of supply for a specified period of time for materials and services, the quantities of usage shown are estimated ONLY. No guarantee or warranty is given or implied by the participants as to the total amount that may or may not be purchased from any resulting contracts. These quantities are for the bidders information ONLY and will be used for tabulation and presentation of bid and the participant reserves the right to increase or decrease quantities as required.
23. The City of North Little Rock reserves the right to reject any and all bids, to accept in whole or in part, to waive any informalities in bids received, to accept bids on materials or equipment with variations from specifications in those cases where efficiency of operation will not be impaired, and unless otherwise specified by the bidder, to accept any item in the bid. If unit prices and extensions thereof do not coincide, the City of North Little Rock may accept the bid for the lesser amount whether reflected by the extension or by the correct multiple of the unit price.
24. Additional information or bid forms may be obtained from:  
COMMERCE DEPARTMENT, 120 Main Street, P.O. Box 5757, North Little Rock, Arkansas 72119 (501) 975-8881  
[www.nlr.ar.gov](http://www.nlr.ar.gov)

**Bidding documents must be submitted on or before the bid's opening date and time. Unless noted, sealed bids must be submitted to the Commerce Department at 120 Main Street, North Little Rock, AR 72114 or PO Box 5757, North Little Rock, AR 72119**

- Do not handle unstable loads or loosely stacked loads.
- Do not handle loads higher than load backrest.
- Space forks as far as load permits.

- Lifting mechanism, and pull parking lever securely.
- Shut off power when leaving truck unattended.
- Block wheels when parking on incline.

3EB-96-AF55

### Kalmar AC, Inc.

<b>MODEL</b>	P 30AX PS 48	<b>TYPE</b>	G
<b>FRONT TIRE</b>	650-10-10-STD	<b>SERIAL #</b>	670762A
<b>REAR TIRE</b>	500-8-8	<b>TILT</b>	6/28

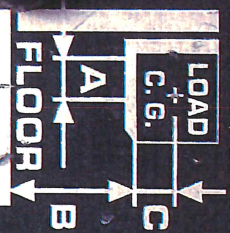
<b>ATTACHMENT MODEL</b>	<b>A</b>	<b>B</b>	<b>C</b>	<b>CAPACITY</b>	<b>TRUCK WEIGHT ±5%</b>
48	600	5250	600	1350	2970
	24	128	24	5000	5570
	mm	mm	mm	kg	kg
	in	in	in	lb	lb
	mm	mm	mm	kg	kg
	in	in	in	lb	lb
	mm	mm	mm	kg	kg
	in	in	in	lb	lb

• CAPACITIES WITH ATTACHMENTS OR FORKS LISTED ABOVE ARE WITH UPRIGHT VERTICAL AND ARE SHOWN WITH THE LOAD LATERALLY CENTERED UNLESS OTHERWISE NOTED.

• THIS TRUCK MEETS ANSI/ASME B56.1.

**TRUCK WEIGHT WITHOUT ATTACHMENT**

2675 kg  
5870 lb



**ELECTRIC TRUCK ONLY**

<b>TRUCK WEIGHT WITHOUT BATT. ±5%</b>	<b>BATTERY WEIGHT</b>		<b>BATT. CAPACITY</b>
	<b>MAX</b>	<b>MIN</b>	
kg	kg	kg	Ah
lb	lb	lb	V
			lb/lb

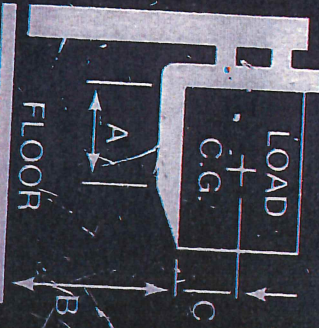
Attachment A1 - Trade-in



Attachment A2

# Kalmar AC

MODEL P155BX 2P/S TYPE LP  
 SERIAL NO. 43805  
 ATTACHMENTS 72 IN. FORKS



CAPACITY WITH ATTACH.  
 LISTED ABOVE OR FORKS  
 WITH UPRIGHT VERTICAL

LBS	A	B	C
15,050	24	136	24
12,000	36	136	24

TRUCK WEIGHT WITH ATTACH. 20,200  
 TRUCK WEIGHT WITHOUT BATT.  
 BATT. WEIGHT MAX. MIN.  
 BATT. CAPACITY H V ID.

ELECTRIC TRUCK ONLY

Attachment #3

**WARNING**

THIS TRUCK MEETS ANSI B56.1





Attachment A5



Attachment 1A



Attachment 17

