

CITY OF NORTH LITTLE ROCK, ARKANSAS  
COMMERCE DEPARTMENT  
Mary Beth Bowman, Director  
Amy Smith, Assistant Director for Procurement  
Crystal Willis, Admin. Sect./Assistant Purchasing Agent



120 MAIN STREET, North Little Rock, AR 72114  
P.O. BOX 5757, North Little Rock, AR 72119  
501-975-8881 Phone  
501-975-8885 Fax

## INVITATION TO BID/PROPOSAL COVER SHEET

Bid Number : \_\_\_\_\_ 18-3530 \_\_\_\_\_ Date Issued: \_\_\_\_\_ April 20, 2018  
Date & Time Bid Opening: \_\_\_\_\_ Tuesday, May 8, 2017 at 10:00a.m.

Fiber Installation (East Broadway, NLR to NLRED's Galloway Substation)

Total Project Bid Price: \$ \_\_\_\_\_

Itemized pricing sheet must also be completed.

Plans, specifications, proposal forms and other contract documents may be examined at the following locations:

- [www.nlr.ar.gov](http://www.nlr.ar.gov), click on the tab "Business", click on "Bids and Vendors" and then click on "Current Bids".
- Commerce Department, 120 Main Street, North Little Rock, Arkansas 72114.
- A five percent (5%) bid bond is required with the bid. A copy of bidder's current contractor's license and general liability insurance certificate must accompany bidding documents.
- Please submit all technical questions in writing to [jnorthcutt@nlr.ar.gov](mailto:jnorthcutt@nlr.ar.gov).
- General bid questions should be directed to the Commerce Department at 501-975-8881.

Responses to relevant questions will be posted on the Commerce web page at [www.nlr.ar.gov](http://www.nlr.ar.gov), click on the tab "Business", click on "Bids and Vendors" and then click on "Current Bids".

The City of North Little Rock encourages participation of small, minority, and woman own business enterprises in the procurement of goods, services, professional services, and construction, either as a general contractor or sub-contractor. It is further requested that whenever possible, majority contractors who require sub-contractors, seek qualified small, minority, and woman businesses to partner with them.

If you are obtaining this bid from our website, please be reminded that addendums may occur. It is therefore advisable that you review our listings for attachments including any changes to the bid.

### EXECUTION OF BID

Upon signing this page, the organization certifies that they have read and agree to the requirements set forth in this bid including conditions set forth and pertinent information requests.

Name of Firm: \_\_\_\_\_ Phone No.: \_\_\_\_\_

Tax I.D. #: \_\_\_\_\_

Business Address: \_\_\_\_\_

Signature of Authorized Person: \_\_\_\_\_

Title: \_\_\_\_\_ Date: \_\_\_\_\_, 2018

**UNSIGNED COVER SHEETS STATEMENTS WILL BE REJECTED**

CITY OF NORTH LITTLE ROCK, ARKANSAS  
 COMMERCE DEPARTMENT  
 Mary Beth Bowman, Director  
 Amy Smith, Assistant Director for Procurement  
 Crystal Willis, Admin. Sect./Assistant Purchasing Agent



120 MAIN STREET, North Little Rock, AR 72114  
 P.O. BOX 5757, North Little Rock, AR 72119  
 501-975-8881 Phone  
 501-975-8885 Fax

## INVITATION TO BID/PROPOSAL COVER SHEET

Bid Number : 18-3530 Date Issued: April 20, 2018  
 Date & Time Bid Opening: Tuesday, May 8, 2018 at 10:00a.m.

Fiber Installation (East Broadway, NLR to NLRED's Galloway Substation)

Itemized Pricing Sheet (Must include sales tax)

1. Quantity: \$ \_\_\_\_\_
2. Equipment: \$ \_\_\_\_\_
3. Manufacture: \$ \_\_\_\_\_
4. Pricing per Item: It is the Job of the contractor to verify all materials needed and their quantity except for the fiber.

Estimated List of Materials with Quantities	Price (w/tax)
Est. 42000' AFL Flex-Span ADSS Cable 144 Count Single Mode 12 Tube Fiber (AE14490620A08)	
Est. 900' AFL Mini-Span 323 Cable 24 Count Single Mode 4 Tube Fiber (AE02496420AA1)	
Est. 92 AFL Dead Ends (ADESE482/510C)	
Est. 6 AFL Dead Ends (ADELD2E-323T)	
Est. 160 AFL Trunnion Assemblies (ATGN475/525)	
Est. 18 AFL Fiber Storage Units for ADSS Fiber Optic Cable (FOS17ADSS)	
Est. 3 AFL Splice Enclosures (LG-250-U-O)	
Est. 12 AFL Splice Trays (LL-2400)	
Est. 3 Patch Panels (FM001419)	
Est. 2 Wall Mount Rack for Patch Panel	
Est. 350' Messenger and Lash Cable	
Other Miscellaneous Materials	

5. Labor: \$ \_\_\_\_\_
6. Fusion Fiber Splicing per Fiber: \$ \_\_\_\_\_

# Request for Bids

North Little Rock Electric Department (NLRED) is requesting separate bids for installation of fiber from East Broadway St. in North Little Rock to NLRED's Galloway Substation. The project will be a turn-key job.

North Little Rock Electric Department is requesting bids for installation of AFL Flex-Span Cable 144 count single mode 12 tube and AFL Mini-Span 323 Cable 24 count Single Mode 4 tube from East Broadway/Alma St. to Galloway Substation at 1701 HWY 391. This will also include multiple splices along the route. The fiber will span approximately 37137 total feet, which does **NOT** include slack loops, splice boxes, building entrances, or sag. All slack loops and splice boxes will include 200 feet of fiber. All fiber to buildings and end points will be 144 or 24 CT count ADSS. All fiber to building end points must have pre-terminated pigtails with LC connectors. All fiber must be tested end to end, and recorded test results submitted before final payment. Any leftover equipment will be the property of NLRED.

North Little Rock Electric will supply maps with the route. These maps will include approximate span distances and clarify if an attachment is tangent, dead-end, etc. The project includes 3 tangent steel poles and 1 dead end steel pole. See attached documents for North Little Rock Electric's specifications for fiber construction. The maximum span for this project is approximately 332'. Slack loop and splice box locations are shown on the maps with SL (Slack Loop) or SB (Splice Box) inside a hexagon symbol. Guy and anchor locations will also be shown with a symbol of X.XA on the appropriate dead-end/angle poles.

Contractor to supply all fiber, tangents, splice enclosures, dead-ends, patch panels, racks, bolts, washers, nuts, etc. NLRED will supply guy and anchor material, but the contractor will be required to install them. Contractor is responsible for all work permits.

Pricing requested will be broken out as follows, **which must include sales tax**:

- Quantity
- Equipment
- Manufacture
- Pricing per item
- Labor
- Fusion Fiber Splicing Per Fiber

It is the job of the contractor to verify all materials needed and their quantity except for the fiber. Below is an estimated list of materials with quantities:

- Est. 42000' AFL Flex-Span ADSS Cable 144 Count Single Mode 12 Tube Fiber (AE14490620A08)
- Est. 900' AFL Mini-Span 323 Cable 24 Count Single Mode 4 Tube Fiber (AE02496420AA1)
- Est. 92 AFL Dead Ends (ADESE482/510C)
- Est. 6 AFL Dead Ends (ADELD2E-323T)
- Est. 160 AFL Trunnion Assemblies (ATGN475/525)
- Est. 18 AFL Fiber Storage Units for ADSS Fiber Optic Cable (FOS17ADSS)
- Est. 3 AFL Splice Enclosures (LG-250-U-O)

- Est. 12 AFL Splice Trays (LL-2400)
- Est. 3 Patch Panels (FM001419)
- Est. 2 Wall Mount Rack for Patch Panel
- Est. 350' Messenger and Lash Cable
- Other Miscellaneous Material

#### Description of Fiber Route

- **Page 1, Point 1** - Splice all 12 fibers from blue tube at E. Broadway & Alma St
- **Page 4, Point 5.1B** – Splice 2 strands (tube to be decided) for route to Fire Station
- **Page 4, Point 6** - Splice 2 strands (tube to be decided) for route to the Ben E. Keith Switch House
- **Page 6, Point 10** - Terminate blue tube fibers 1-6 in and fibers 7-12 out, leading back to point 1. Install 2RU Fiber Termination Patch Panel in Galloway Substation, with "LC" Port Terminations for each fiber

#### FIBER FOOTAGES PER PAGE

PAGE	MAIN LINE FOOTAGE (OH)	TAP FOOTAGE (OH)	UG FOOTAGE	FEET IN SL'S (200 FT PER)	FEET IN SB'S (200 FT PER)	FEET IN BLDG ENTRANCES (200 FT PER)	TOTAL FOOTAGE
1	3777	0	0	400	200	0	4377
2	3579	0	0	400	0	0	3979
3	7227	0	0	800	0	0	8027
4	4539	174	283	600	400	400	5743
5	3642	0	0	400	0	0	4042
6	9769	0	0	1000	0	200	10969

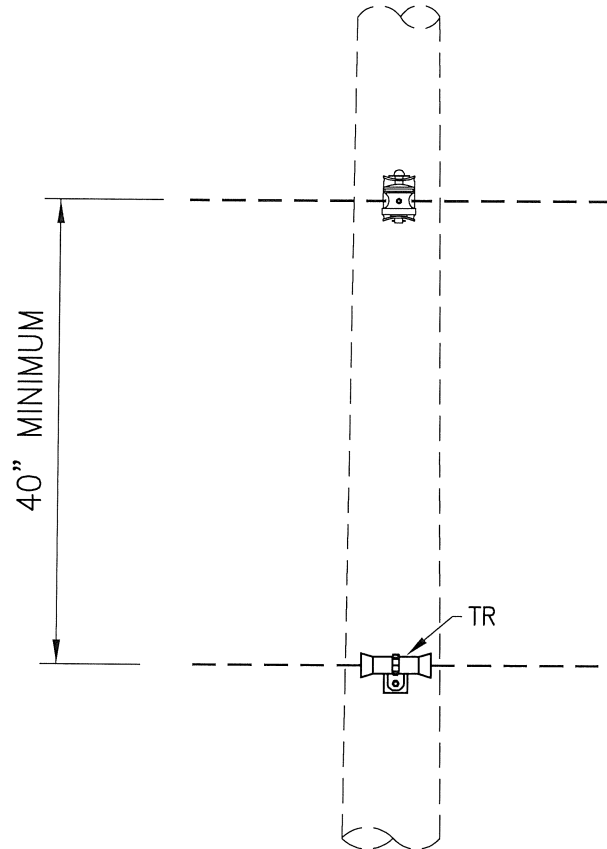
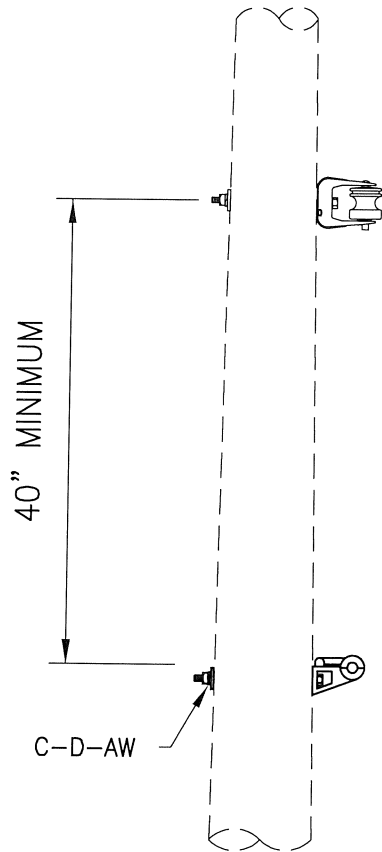
**\*Table does not take sag into account**

**BIDDERS ACKNOWLEDGE AND UNDERSTAND THAT UPON AWARD OF THE WINNING BID, THE SELECTED BIDDER WILL BE REQUIRED TO REVIEW AND SIGN A CONTRACT WITH THE CITY OF NORTH LITTLE ROCK PRIOR TO BEGINNING WORK.**

Please submit all questions in writing to [jnorthcutt@nlr.ar.gov](mailto:jnorthcutt@nlr.ar.gov)

Jared Northcutt  
North Little Rock Electric  
Distribution Design Electrical Engineer  
Office: 501-992-4092



**NOTE:**

ALL NEW POLES ARE REQUIRED TO HAVE A GROUNDLINE POLE WRAP AND A POLE TOP CAP INSTALLED.

**NOTE:**

FIBER ATTACHMENT MUST BE 40" MINIMUM BELOW LOWEST SUPPLY CONDUCTOR

ITEM	QUAN.	MATERIAL DESCRIPTION
C	1	MACHINE BOLT, 5/8" x REQ'D LENGTH
D	1	SQUARE WASHER, 2 1/4" x 2 1/4"
AW	1	LOCK WASHER (SPRING TYPE), AS REQ'D
TR	1	TRUNNION ASSEMBLY



NORTH LITTLE ROCK ELECTRIC CONSTRUCTION STANDARDS

TANGENT  
ADSS FIBER

DATE: 7-14-2016

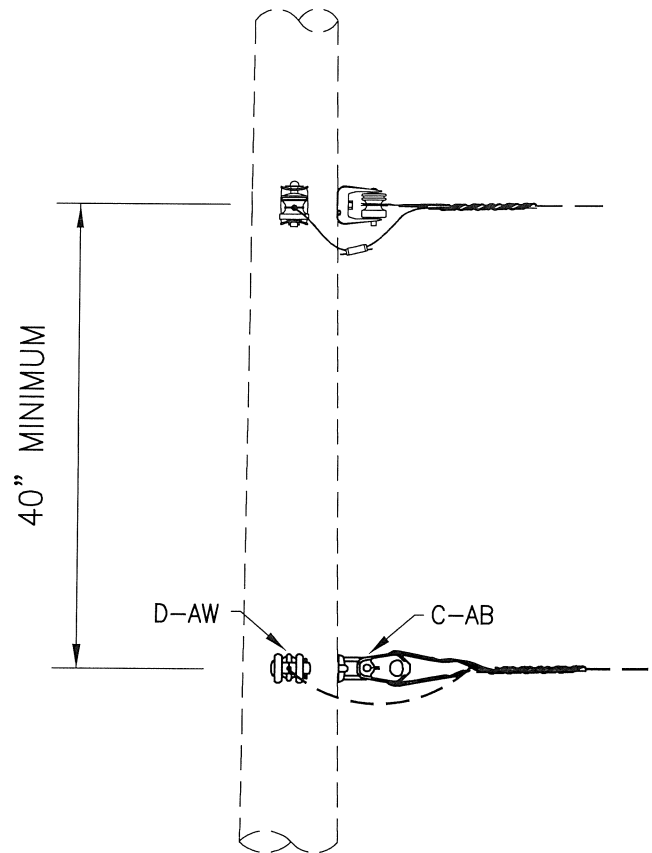
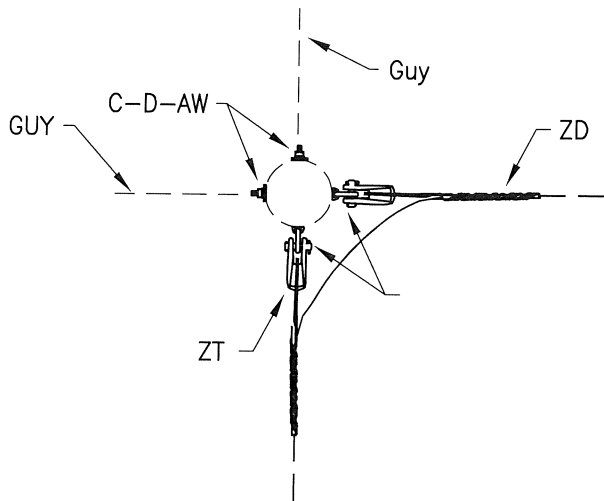
REVISION

SHT No: 1

0

CONSTRUCTION  
STANDARD No.

Z-1

**NOTE:**

ALL NEW POLES ARE REQUIRED TO HAVE A GROUNDLINE POLE WRAP AND A POLE TOP CAP INSTALLED.

**NOTE:**

FIBER ATTACHMENT MUST BE 40" MINIMUM BELOW LOWEST SUPPLY CONDUCTOR

ITEM	QUAN.	MATERIAL DESCRIPTION
C	2	MACHINE BOLT, 5/8" x REQ'D LENGTH
D	2	WASHER, 2 1/4" x 2 1/4"
AB	2	STD EYELET BOLT, 5/8"
AW	2	LOCK WASHER (SPRING TYPE), AS REQ'D
ZD	2	FIBER DEAD END ASSEMBLY
ZT	2	THIMBLE CLEVIS



NORTH LITTLE ROCK ELECTRIC CONSTRUCTION STANDARDS

DEAD-END ANGLE - 16° TO 165° ANGLE

ADSS FIBER

DATE: 7-20-2016

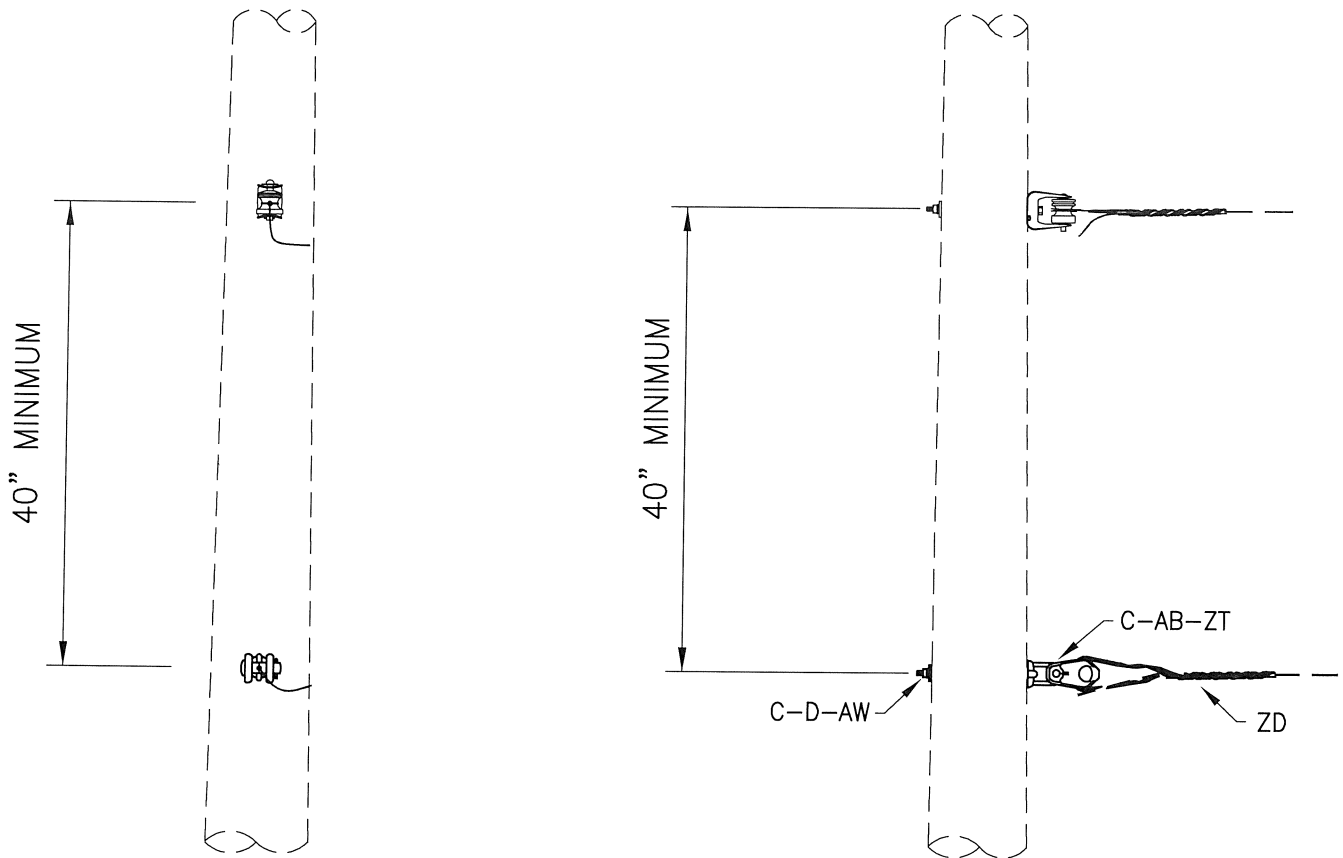
SHT No: 1

CONSTRUCTION  
STANDARD No.

REVISION

0

Z-4

**NOTE:**

ALL NEW POLES ARE REQUIRED TO HAVE A GROUNDLINE POLE WRAP AND A POLE TOP CAP INSTALLED.

**NOTE:**

FIBER ATTACHMENT MUST BE 40" MINIMUM BELOW LOWEST SUPPLY CONDUCTOR

ITEM	QUAN.	MATERIAL DESCRIPTION
C	1	MACHINE BOLT, 5/8" x REQ'D LENGTH
D	1	WASHER, 2 1/4" x 2 1/4"
AB	1	STD EYELET BOLT, 5/8"
AW	1	LOCK WASHER (SPRING TYPE), AS REQ'D
ZD	1	FIBER DEAD END ASSEMBLY
ZT	1	THIMBLE CLEVIS



NORTH LITTLE ROCK ELECTRIC CONSTRUCTION STANDARDS

SINGLE DEAD-END  
ADSS FIBER

DATE: 7-14-2016

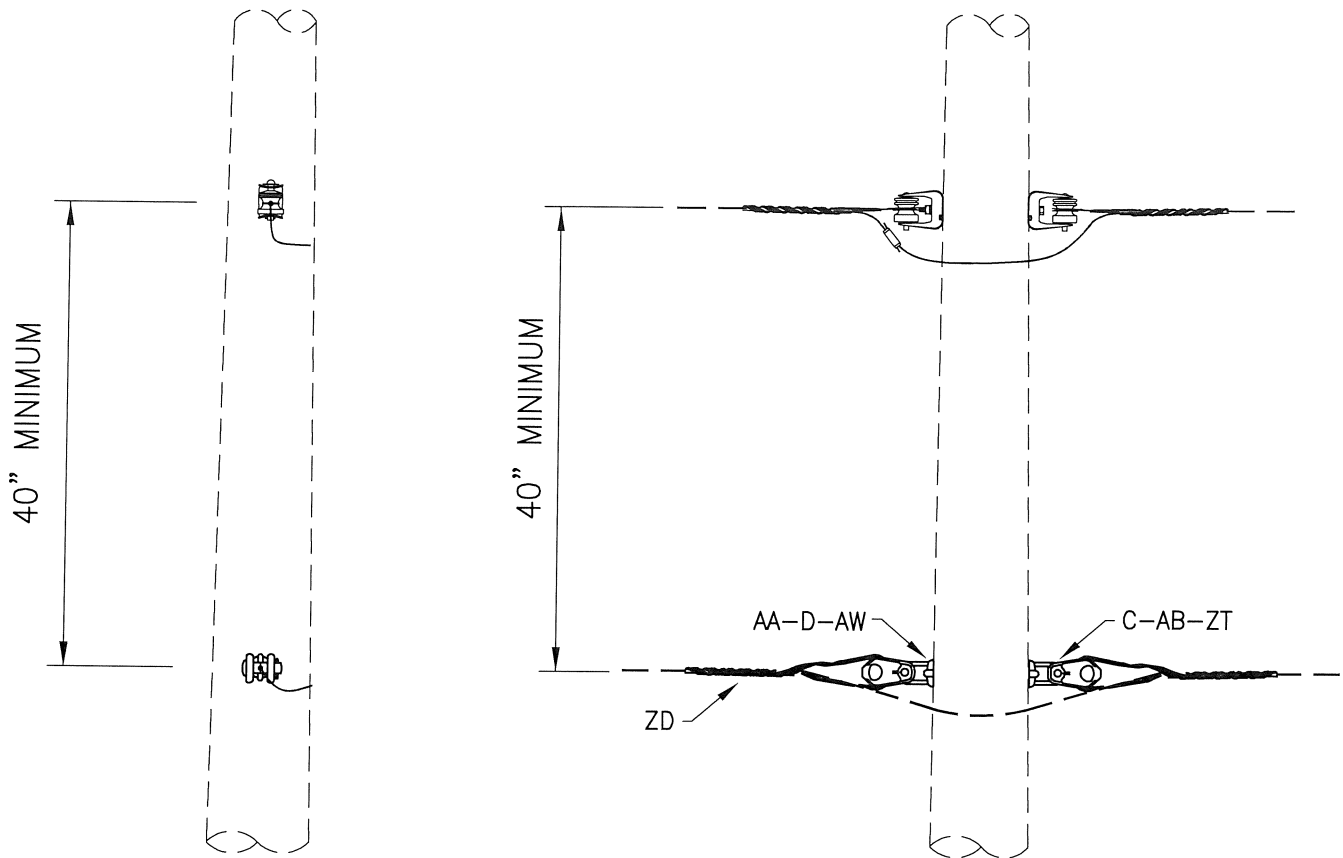
SHT No: 1

CONSTRUCTION  
STANDARD No.

REVISION

0

Z-5

**NOTE:**

ALL NEW POLES ARE REQUIRED TO HAVE A GROUNDLINE POLE WRAP AND A POLE TOP CAP INSTALLED.

**NOTE:**

FIBER ATTACHMENT MUST BE 40" MINIMUM BELOW LOWEST SUPPLY CONDUCTOR

ITEM	QUAN.	MATERIAL DESCRIPTION
C	1	MACHINE BOLT, 5/8" x REQ'D LENGTH
D	1	WASHER, 2 1/4" x 2 1/4"
AA	1	EYE NUT, 5/8"
AB	1	STD EYELET BOLT, 5/8"
AW	1	LOCK WASHER (SPRING TYPE), AS REQ'D
ZD	2	FIBER DEAD END ASSEMBLY
ZT	2	THIMBLE CLEVIS



NORTH LITTLE ROCK ELECTRIC CONSTRUCTION STANDARDS

DOUBLE DEAD-END  
ADSS FIBER

DATE: 7-14-2016

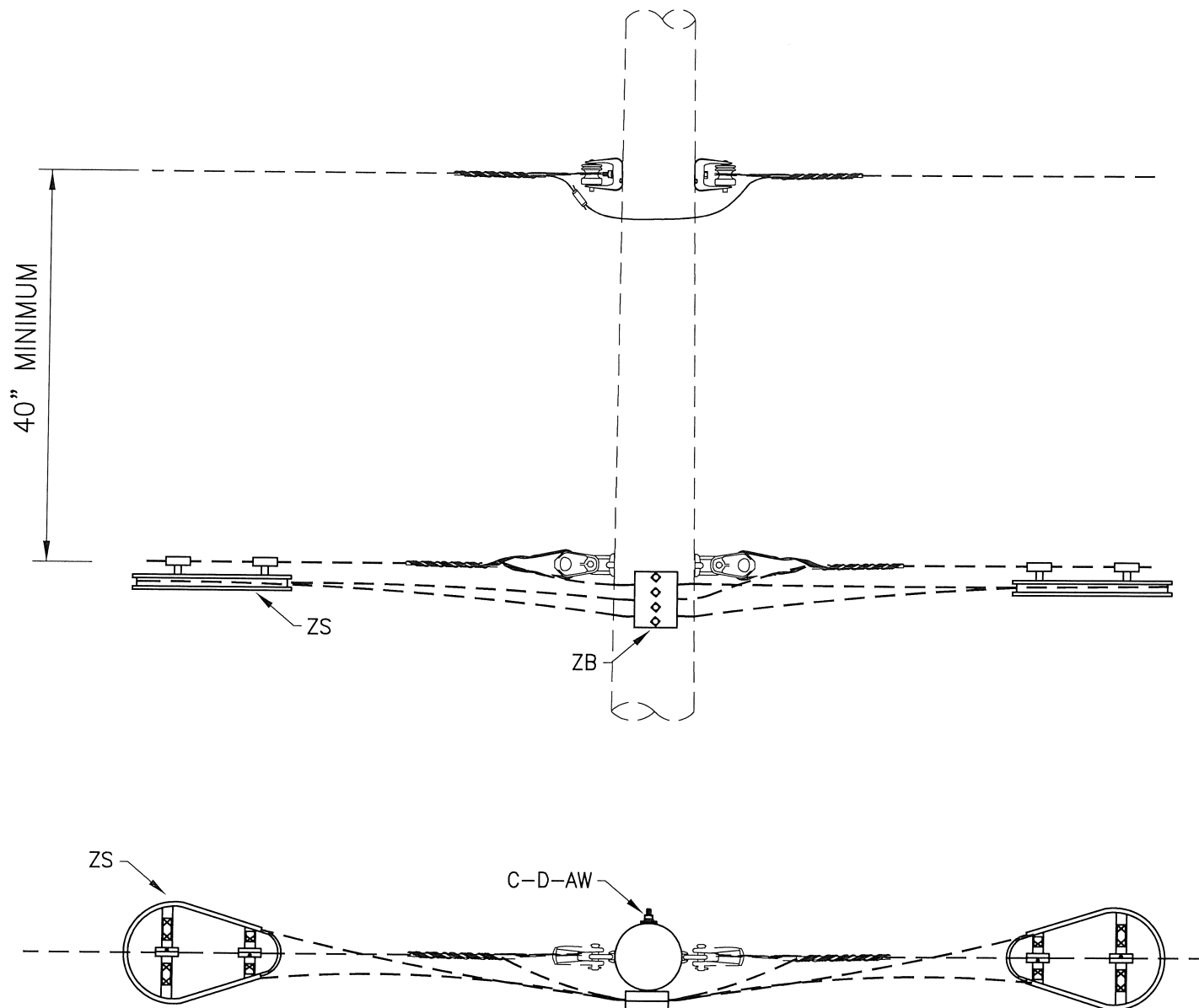
SHT No: 1

CONSTRUCTION  
STANDARD No.

REVISION

0

Z-6



**NOTE:**  
ALL NEW POLES ARE REQUIRED TO  
HAVE A GROUNDLINE POLE WRAP  
AND A POLE TOP CAP INSTALLED.

**NOTE:**  
FIBER ATTACHMENT MUST BE 40"  
MINIMUM BELOW LOWEST SUPPLY  
CONDUCTOR

ITEM	QUAN.	MATERIAL DESCRIPTION
C	1	MACHINE BOLT, 5/8" x REQ'D LENGTH
D	1	WASHER, 2 1/4" x 2 1/4"
AW	1	LOCK WASHER (SPRING TYPE), AS REQ'D
ZB	1	FIBER MOUNTING BRACKET
ZS	2	FIBER STORAGE UNIT



NORTH LITTLE ROCK ELECTRIC CONSTRUCTION STANDARDS

STORAGE UNIT  
ADSS FIBER

DATE: 7-21-2016

SHT No: 1

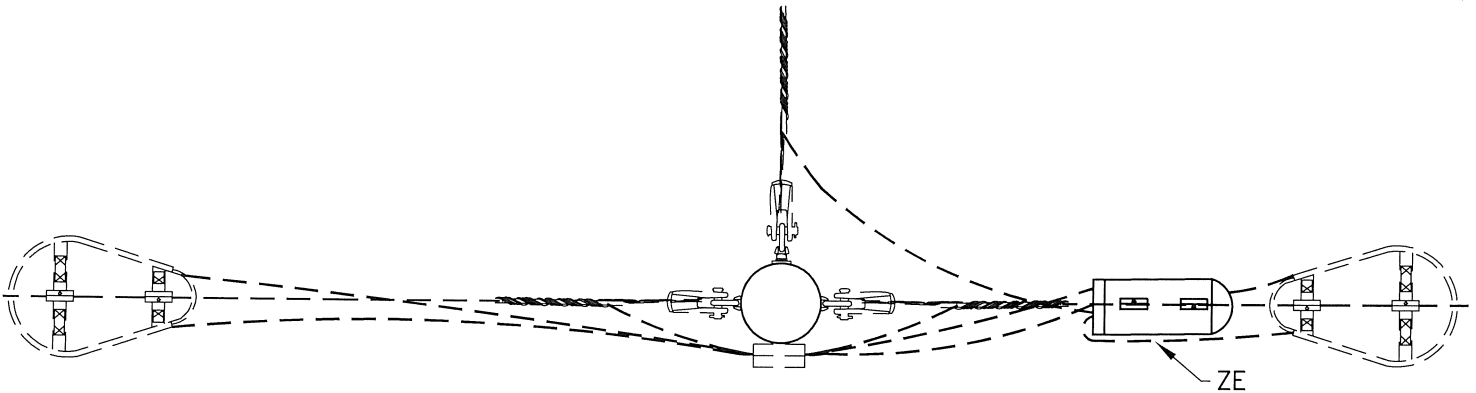
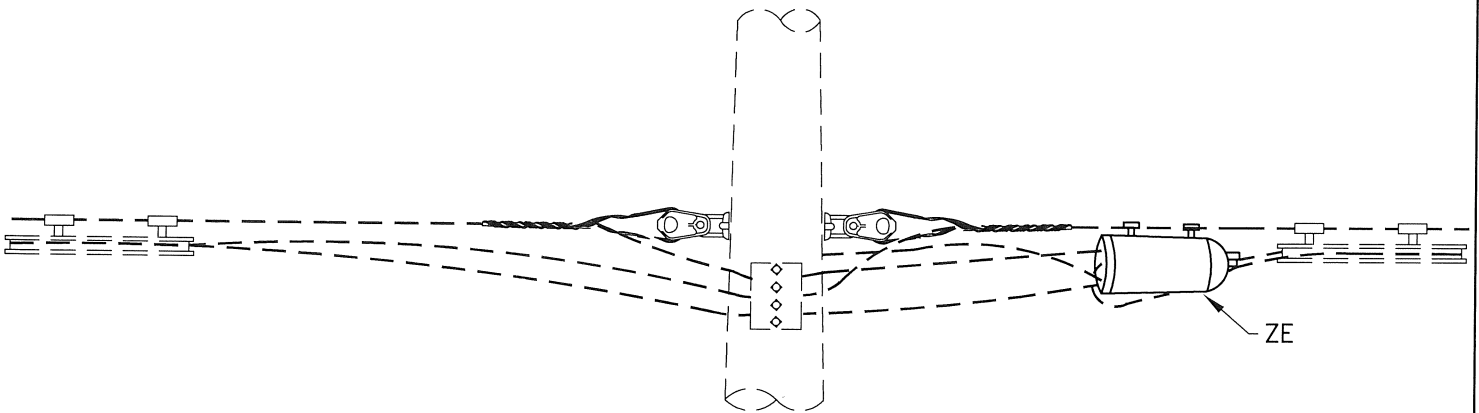
CONSTRUCTION  
STANDARD No.

REVISION

0

ZQ-1




**NOTE:**

ALL NEW POLES ARE REQUIRED TO  
HAVE A GROUNDLINE POLE WRAP  
AND A POLE TOP CAP INSTALLED.

**NOTE:**

FIBER ATTACHMENT MUST BE 40"  
MINIMUM BELOW LOWEST SUPPLY  
CONDUCTOR

ITEM	QUAN.	MATERIAL DESCRIPTION		
ZE	1	FIBER SPLICE ENCLOSURE		
	NORTH LITTLE ROCK ELECTRIC CONSTRUCTION STANDARDS SPLICE ENCLOSURE ADSS FIBER			DATE: 7-25-2016
				REVISION 0
				SHT No: 1
				CONSTRUCTION STANDARD No. ZQ-2

**TERMS AND STANDARD CONDITIONS  
CITY OF NORTH LITTLE ROCK, ARKANSAS**

PLEASE READ CAREFULLY

1. When submitting an "Invitation to Bid," the bidder warrants that the commodities covered by the bid shall be free from defects in material and workmanship under normal use and service. In addition, bidder must deliver new commodities of the latest design and model, unless otherwise specified in the "Invitation to Bid."
2. Prices quoted are to be net process, and when an error is made in extending total prices, the City may accept the bid for the lesser amount whether reflected by extension or by the correct multiple of the unit price.
3. Discounts offered will be taken when the City qualifies for such. The beginning date for computing discounts will be the date of invoice or the date of delivery and acceptance, whichever is later.
4. When bidding other than the brand and/or model specified in the "Invitation to Bid," the brand and/or model number must be stated by that item in the "Invitation to Bid," and descriptive literature be submitted with the bid.
5. The City reserves the right to reject any and all bids.
6. The Purchasing office reserves the right to award items, all or none, or by line item(s).
7. Quality, time and probability of performance may be factors in making an award.
8. Bid quotes submitted will remain firm for 30 calendar days from bid opening date; however, the prices may remain firm for a longer period of time if mutually agreeable between bidder and the Commerce Department.
9. Bidder must submit a completed signed copy of the front page of the "Invitation to Bid" and must submit any other information required in the "Invitation to Bid."
10. In the event a contract is entered into pursuant to the "Invitation to Bid," the bidder shall not discriminate against any qualified employee or qualified applicant for employment because of race, sex, color, creed, national origin or ancestry. The bidder must include in any and all subcontracts a provision similar to the above.
11. Sales or use tax is not to be included in the bid price, but is to be added by the vendor to the invoice billing to the City. Although use tax is not to be included in this bid, vendors are to register and pay tax direct to the Arkansas State Revenue Department.
12. Prices quoted shall be "Free on Board" (F.O.B.) to destination at designated facility in North Little Rock. Charges may not be added after the bid is opened.
13. In the event of two or more identical low bids, the contract may be awarded arbitrarily or for any reason to any of such bidders or split in any proportion between them at the discretion of the Commerce Department.
14. Specifications furnished with this Invitation are intended to establish a desired quality or performance level, or other minimum dimensions and capacities, which will provide the best product available at the lowest possible price. Other than designated brands and/or models approved as equal to designated products shall receive an equal consideration.
15. Samples of items when required, must be furnished free, and, if not called for within 30 days from date of bid opening, will become property of the City.
16. Bids will not be considered if they are: 1. Submitted after the bid's opening time. 2. Submitted electronically or faxed (unless authorized by Purchasing Agent).
17. Guarantees and warranties should be submitted with the bid, as they may be a consideration in making an award.
18. **CONSTRUCTION**
  - A. Contractor is to supply the City with evidence of having and maintaining proper and complete insurance, specifically Workman's Compensation Insurance in accordance with the laws of the State of Arkansas, Public Liability and Property Damage. All premiums and cost shall be paid by the Contractor. In no way will the City be responsible in case of accident.
  - B. When noted, a Certified check or bid bond in the amount of 5% of total bid shall accompany bid.
  - C. A Performance Bond equaling the total amount of any bid exceeding \$10,000.00 must be provided for any contract for the repair, alteration or erection of any public building, public structure or public improvement (pursuant to Act 351 or 1953 as amended by Act 539 of 1979).
19. **LIQUIDATED DAMAGES** - Liquidated damages shall be assessed beginning on the first day following the maximum delivery or completion time entered on this bid form and/or provided for by the plans and specifications.
20. **AMBIGUITY IN BID** - Any ambiguity in any bid as the result of omission, error, lack of clarity or non-compliance by the bidder with specifications, instructions, and all conditions of bidding shall be construed in the light most favorable to the City.
21. The bid number should be stated on the face of the sealed bid envelope. If it is not, the envelope will have to be opened to identify.
22. Whenever a bid is sought seeking a source of supply for a specified period of time for materials and services, the quantities of usage shown are estimated ONLY. No guarantee or warranty is given or implied by the participants as to the total amount that may or may not be purchased from any resulting contracts. These quantities are for the bidders information ONLY and will be used for tabulation and presentation of bid and the participant reserves the right to increase or decrease quantities as required.
23. The City of North Little Rock reserves the right to reject any and all bids, to accept in whole or in part, to waive any informalities in bids received, to accept bids on materials or equipment with variations from specifications in those cases where efficiency of operation will not be impaired, and unless otherwise specified by the bidder, to accept any item in the bid. If unit prices and extensions thereof do not coincide, the City of North Little Rock may accept the bid for the lesser amount whether reflected by the extension or by the correct multiple of the unit price.
24. Additional information or bid forms may be obtained from:  
COMMERCE DEPARTMENT, 120 Main Street, P.O. Box 5757, North Little Rock, Arkansas 72119 (501) 975-8881 [www.nlr.ar.gov](http://www.nlr.ar.gov)

**Bidding documents must be submitted on or before the bid's opening date and time. Unless noted, sealed bids must be submitted to the Commerce Department at 120 Main Street, North Little Rock, AR 72114 or PO Box 5757, North Little Rock, AR 72119**



INSTALL FIBER 40" BELOW POWER SPACE. IF 40" IS UNATTAINABLE, INSTALL FIBER APPROXIMATELY 1' ABOVE HIGHEST COMMUNICATION ATTACHMENT POINT

PT #1 TO PT #2: (APPROX. 3777') OVERHEAD FIBER CABLE, 144CT

SL

= SLACK LOOP

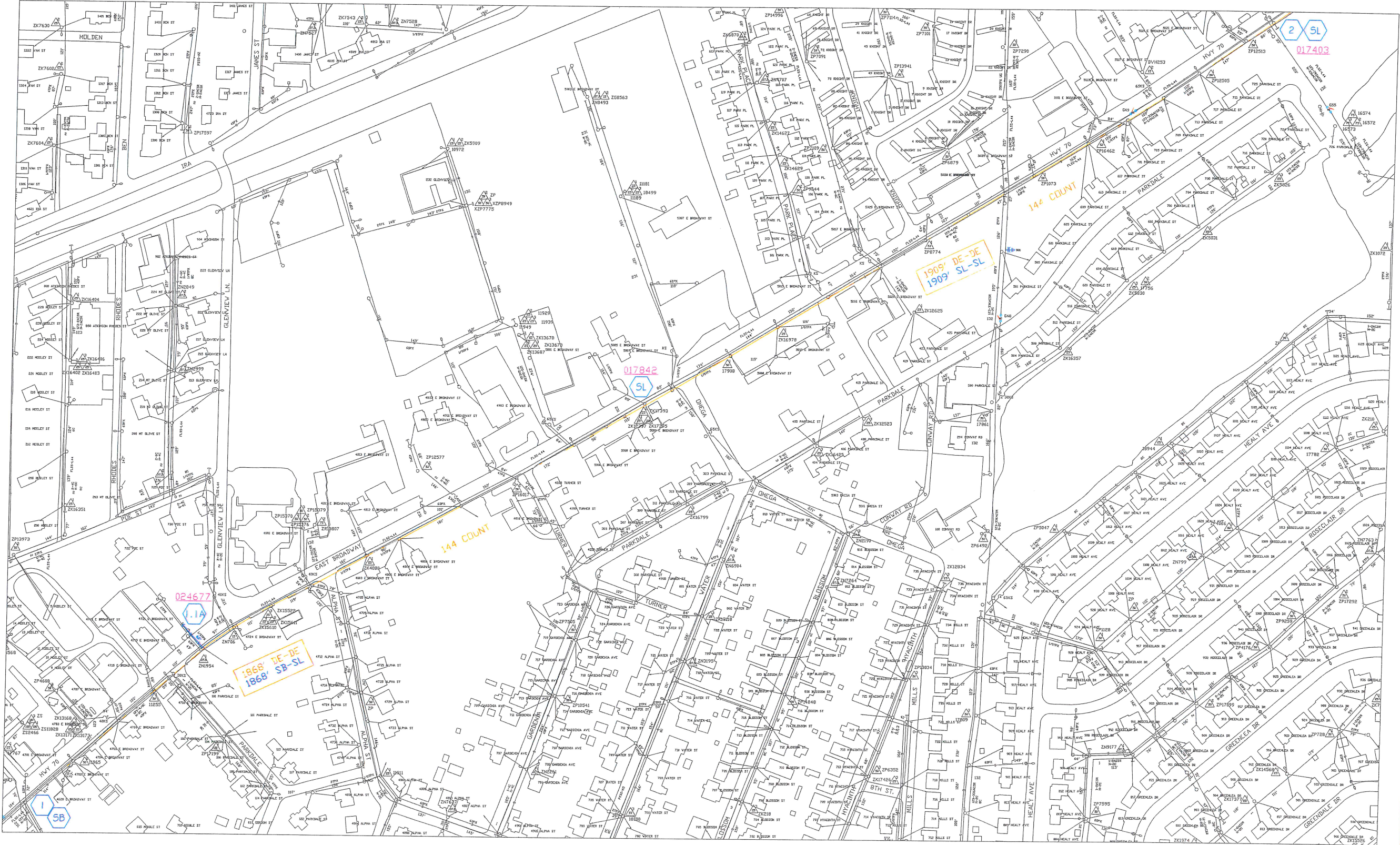
SB

= SPLICE BOX

X.XA

= ANCHOR & DOWN/OVERHEAD GUY

PAGE 1 OF 6



NORTH LITTLE ROCK  
ELECTRIC DEPARTMENT

8th & Main Street (501) 372-0100

ACCOUNT NO: 107.2

JOB TYPE: DIST. IMP.

CUSTOMER: NLR

ADDRESS: E. BROADWAY/HWY 70

PHONE: ( )

NORTH ARROW

SCALE: NONE NTS: ☐

ELECTRICIAN: ( )

TELEPHONE: ( )

PAGER/MOBILE: ( )

CKT: -- STATION: --

TREE TRIMMING NEEDED: ☐ YES ☒ NO

JOB STAKED: ☐ YES ☒ NO

J / USE: ☒ TELEPHONE ☒ CATV

AR ONE CALL NO: \_\_\_\_\_

WATER \_\_\_\_\_ WASTE WATER \_\_\_\_\_

FOR CONSTRUCTION: \_\_\_\_\_

FOREMAN: \_\_\_\_\_

DATE STARTED: / /

DATE COMPLETED: / /

DESIGNED BY: NORTHCUTT

DATE TO CONSTRUCTION: / /

APPROVED BY: WOODWARD

SYSTEM MAP No: 248074/251074

WORK ORDER No: 17-10-34

BOOKED CARD FILE: 248074

CADD FILE: 17-10-34.dwg



INSTALL FIBER 40" BELOW POWER SPACE. IF 40" IS UNATTAINABLE, INSTALL FIBER APPROXIMATELY 1' ABOVE HIGHEST COMMUNICATION ATTACHMENT POINT

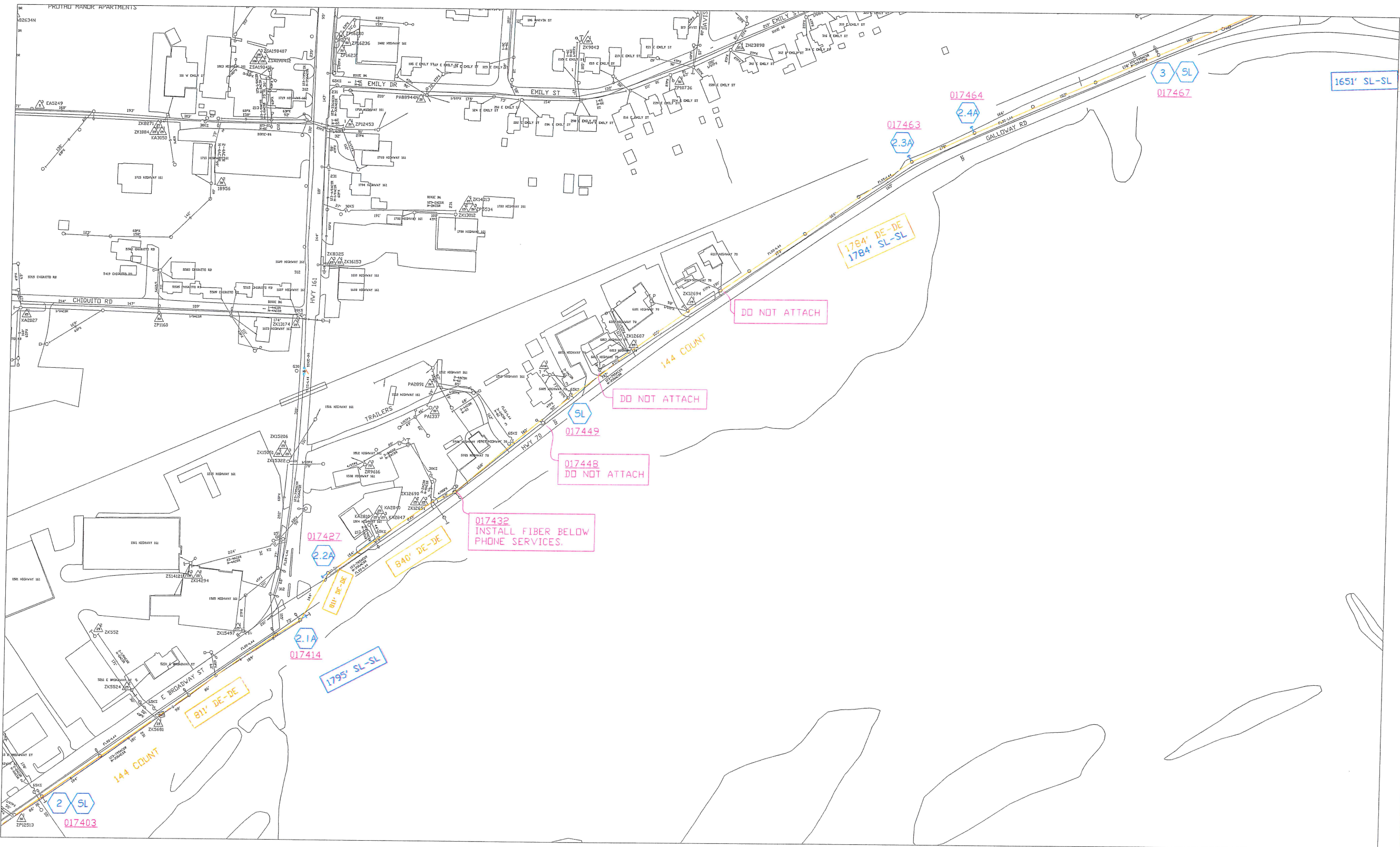
PT #2 TO PT #3: (APPROX. 3579') OVERHEAD FIBER CABLE, 144CT

- SL

= SLACK LOOP
- SB

= SPLICE BOX
- X.XA

= ANCHOR & DOWN/OVERHEAD GUY



NORTH LITTLE ROCK  
ELECTRIC DEPARTMENT

8th & Main Street (501) 372-0100

ACCOUNT NO: 107.2

JOB TYPE: DIST. IMP.

CUSTOMER: NLR

ADDRESS: E. BROADWAY/HWY 70

PHONE: ( )

NORTH ARROW

SCALE: NONE NTS: ☐

ELECTRICIAN: \_\_\_\_\_

TELEPHONE: ( ) \_\_\_\_\_

PAGER/MOBILE: ( ) \_\_\_\_\_

CKT: --- STATION: ---

TREE TRIMMING NEEDED: ☐ YES ☒ NO

JOB STAKED ☐ YES ☒ NO

J / USE: ☒ TELEPHONE ☒ CATV

AR ONE CALL NO: \_\_\_\_\_

WATER \_\_\_\_\_ WASTE WATER \_\_\_\_\_

FOR CONSTRUCTION:

FOREMAN: \_\_\_\_\_

DATE STARTED: / /

DATE COMPLETED: / /

DESIGNED BY: NORTHCUTT

DATE TO CONSTRUCTION: / /

APPROVED BY: WOODWARD

SYSTEM MAP No: 251076

WORK ORDER No: 17-10-34

6000 FREE 17-10-34.dwg

INSTALL FIBER 40" BELOW POWER SPACE. IF 40" IS UNATTAINABLE, INSTALL FIBER APPROXIMATELY 1' ABOVE HIGHEST COMMUNICATION ATTACHMENT POINT

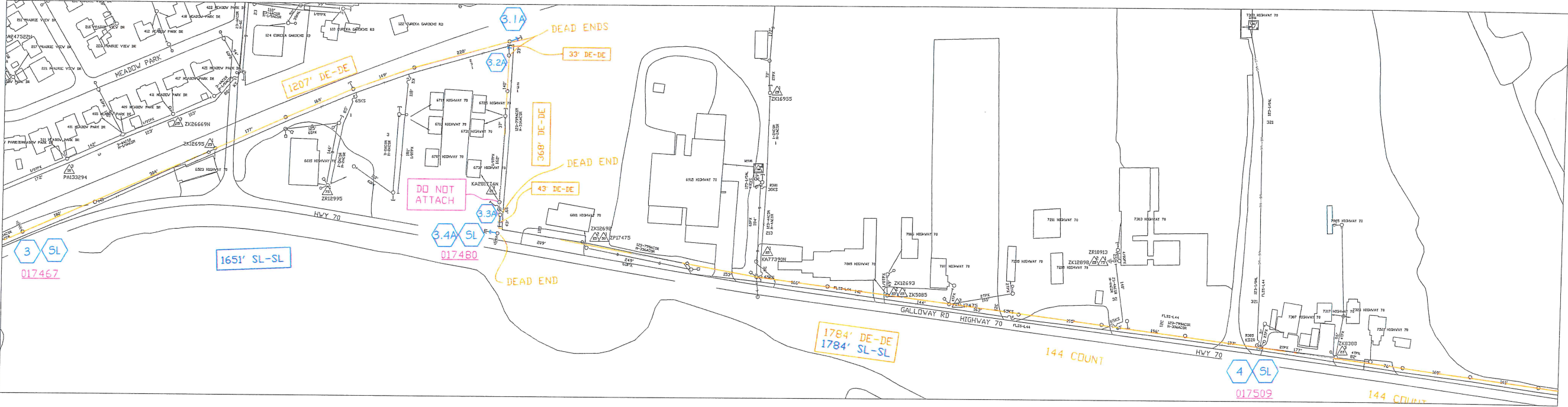
PT #3 TO PT #4: (APPROX. 3435') OVERHEAD FIBER CABLE, 144CT

- SL

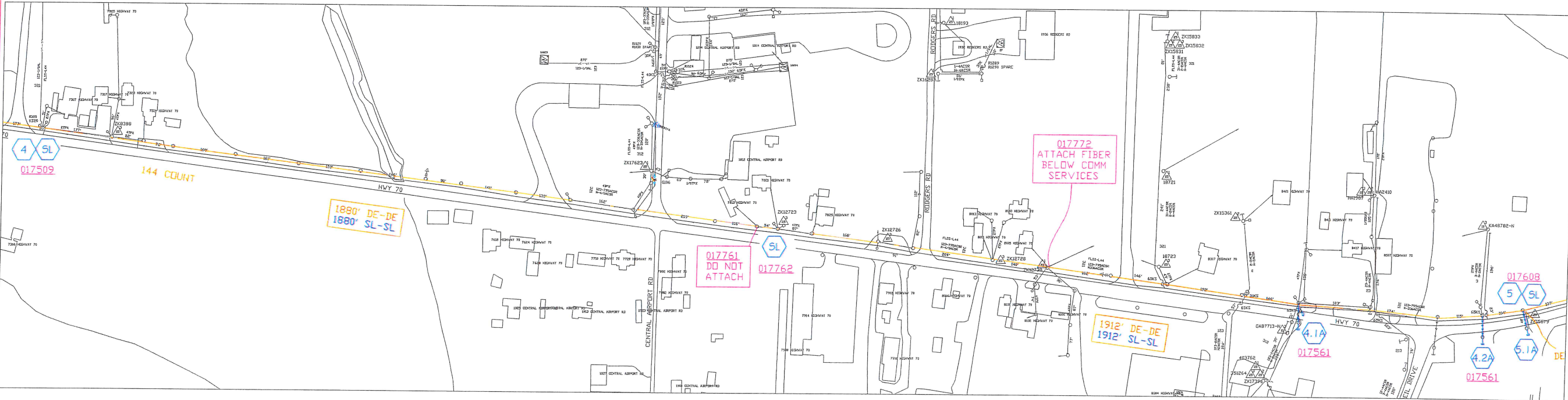
= SLACK LOOP
- SB

= SPLICE BOX
- X.XA

= ANCHOR & DOWN/OVERHEAD GUY



PT #4 TO PT #5: (APPROX. 3792') OVERHEAD FIBER CABLE, 144CT



NORTH LITTLE ROCK  
ELECTRIC DEPARTMENT

8th & Main Street (501) 372-0100

ACCOUNT NO: 107.2

JOB TYPE: DIST. IMP.

CUSTOMER: NLR

ADDRESS: HWY 70

PHONE: ( )

NORTH ARROW

SCALE: NONE NTS: ☐

ELECTRICIAN: ( )

TELEPHONE: ( )

PAGER/MOBILE: ( )

CKT: -- STATION: --

TREE TRIMMING NEEDED: ☐ YES ☒ NO

JOB STAKED ☐ YES ☒ NO

J / USE: ☒ TELEPHONE ☒ CATV

AR ONE CALL NO: ( )

WATER WASTE WATER

FOR CONSTRUCTION:

FOREMAN: ( )

DATE STARTED: / /

DATE COMPLETED: / /

DESIGNED BY: NORTHCUTT

DATE TO CONSTRUCTION: / /

APPROVED BY: WOODWARD

SYSTEM MAP No: 254078/257076

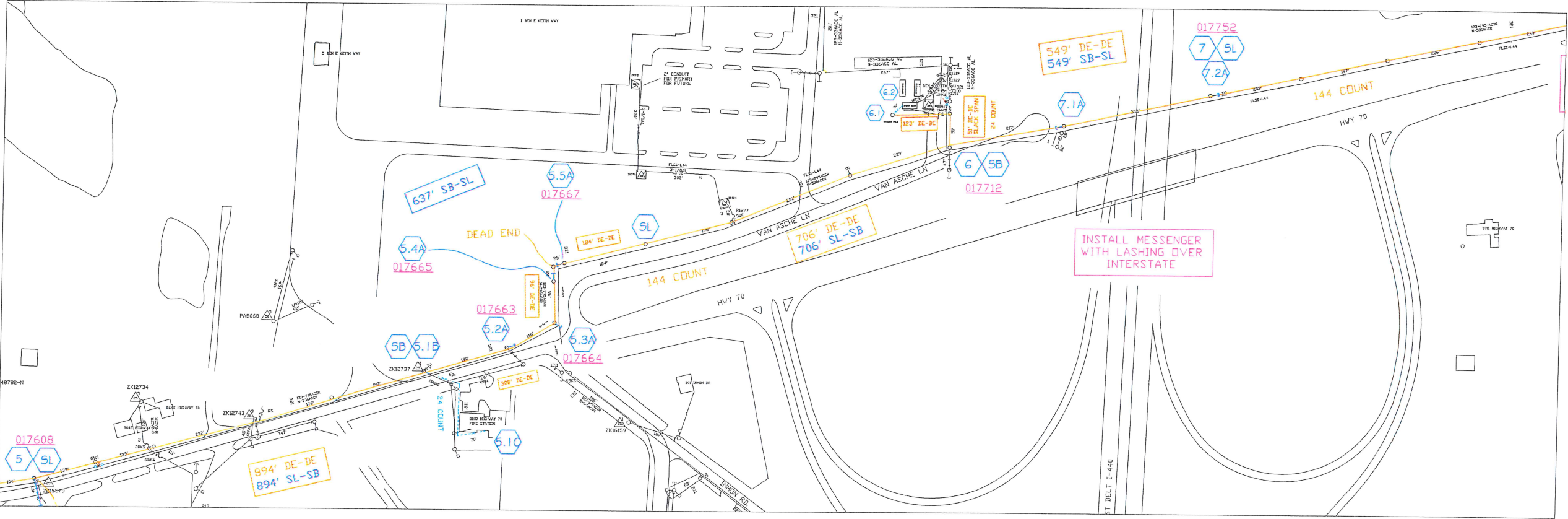
WORK ORDER No: 17-10-34



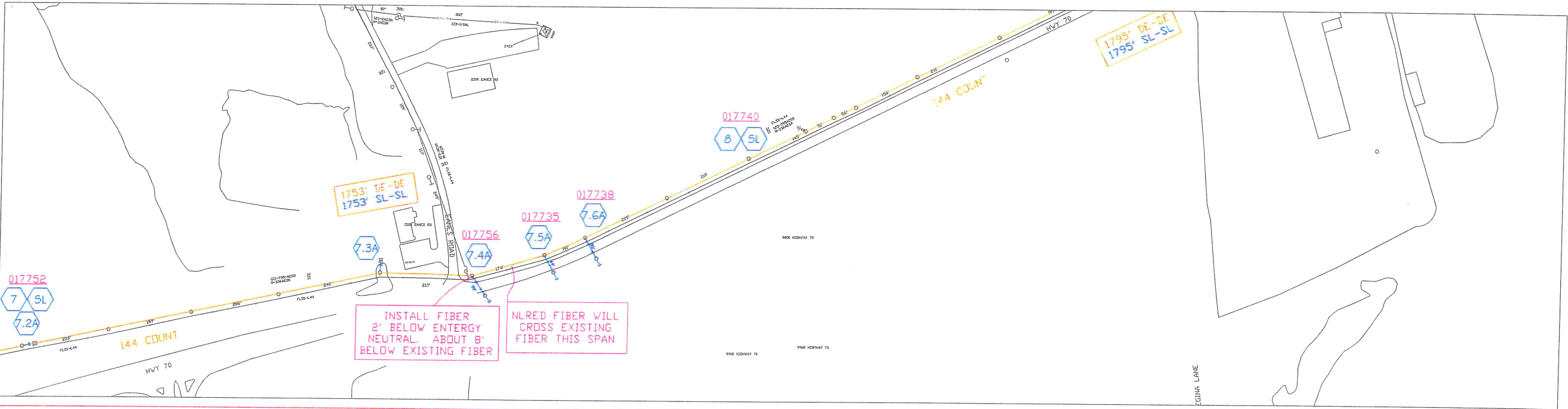
INSTALL FIBER 40" BELOW POWER SPACE. IF 40" IS UNATTAINABLE, INSTALL FIBER APPROXIMATELY 1' ABOVE HIGHEST COMMUNICATION ATTACHMENT POINT

PT #5 TO PT #7: (APPROX. 2786') OVERHEAD FIBER CABLE, 144CT  
PT #5.1B TO PT #5.1C: (APPROX. 253') UNDERGROUND FIBER CABLE, 24CT  
PT #6 TO PT #6.1: (APPROX. 174') OVERHEAD FIBER CABLE, 24CT  
PT #6.1 TO PT #6.2: (APPROX. 30') UNDERGROUND FIBER CABLE, 24CT

- SL = SLACK LOOP
- SB = SPLICE BOX
- X.XA = ANCHOR & DOWN/OVERHEAD GUY



PT #7 TO PT #8: (APPROX. 1753') OVERHEAD FIBER CABLE, 144CT



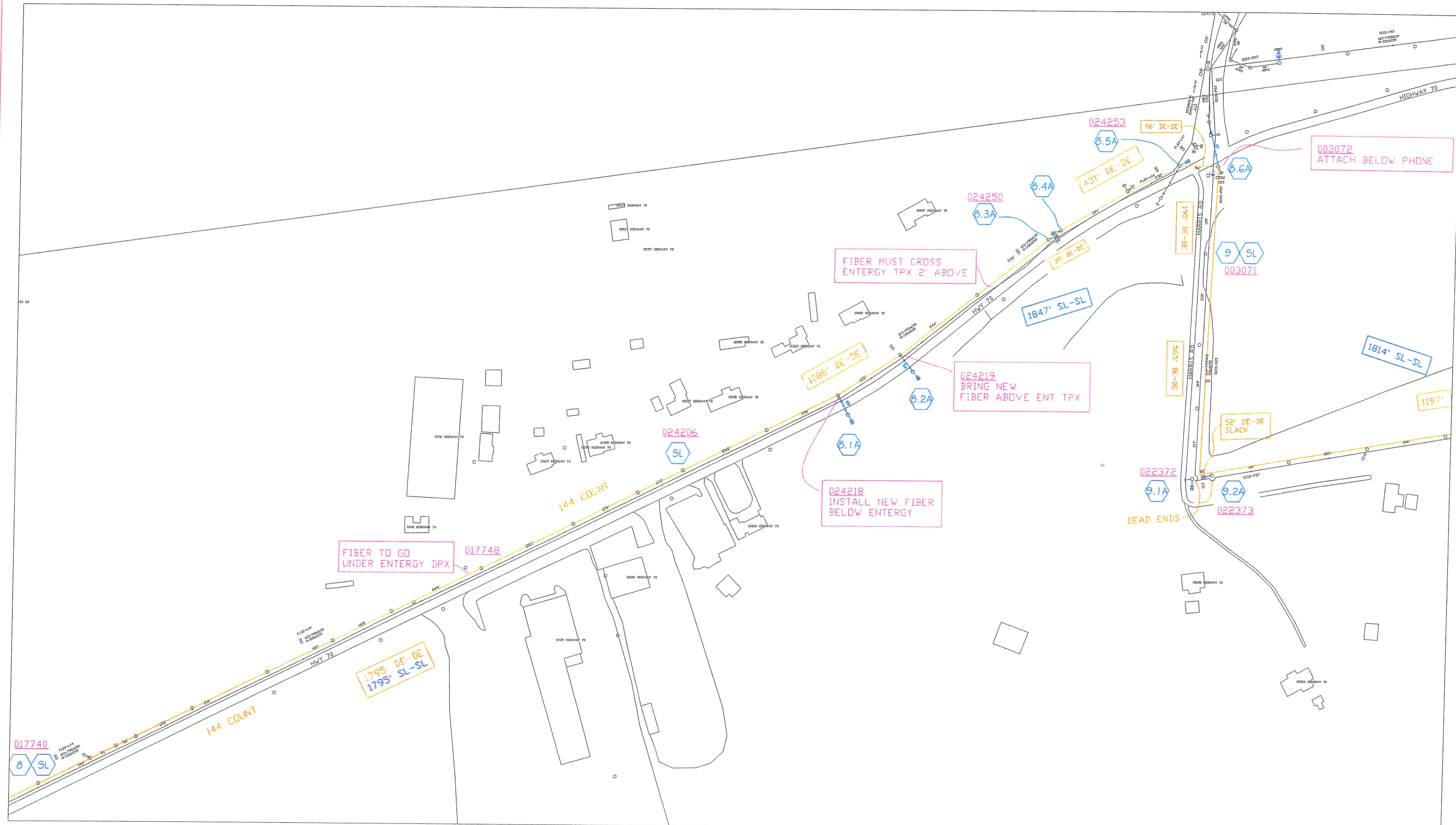
**NORTH LITTLE ROCK ELECTRIC DEPARTMENT**  
8th & Main Street (501) 372-0100


ACCOUNT NO: 107.2  
JOB TYPE: DIST. IMP.  
CUSTOMER: NLR  
ADDRESS: HWY 70  
PHONE: ( )  
NORTH ARROW  
SCALE: NONE NTS: ☐  
ELECTRICIAN:   
TELEPHONE: ( )  
PAGER/MOBILE: ( )  
CMT: -- STATION: --  
TREE TRIMMING NEEDED: ☐ YES ☒ NO  
JOB STAKED ☐ YES ☒ NO  
J / USE: ☒ TELEPHONE ☒ CATV  
AR ONE CALL NO:   
WATER:   
WASTE WATER:   
FOR CONSTRUCTION:  
FOREMAN:   
DATE STARTED: / /  
DATE COMPLETED: / /  
DESIGNED BY: NORTHCUTT  
DATE TO CONSTRUCTION: / /  
APPROVED BY: WOODWARD  
SYSTEM MAP No: 260076/263078  
WORK ORDER No: 17-10-34

PT #8 TO PT #9: (APPROX. 3642') OVERHEAD FIBER CABLE, 144CT

- SL = SLACK LOOP
- SB = SPLICE BOX
- X.XA = ANCHOR & DOWN/OVERHEAD GUY

PAGE 5 OF 6





**NORTH LITTLE ROCK  
ELECTRIC DEPARTMENT**

8th & Main Street (501) 372-0100

ACCOUNT NO: 107.2


JOB TYPE: DIST. IMP.

CUSTOMER: NLR

ADDRESS: HWY 70/HARRIS RD

PHONE: ( )

NORTH ARROW



SCALE: NONE NTS: ☐

ELECTRICIAN: \_\_\_\_\_

TELEPHONE: ( )

PAGER/MOBILE: ( )

CKT: -- STATION: --

TREE TRIMMING NEEDED: ☐ YES ☒ NO

JOB STAKED ☐ YES ☒ NO

J / USE: ☒ TELEPHONE ☒ CATV

AR ONE CALL NO: \_\_\_\_\_

WATER \_\_\_\_\_ WASTE WATER \_\_\_\_\_

FOR CONSTRUCTION:

FOREMAN: \_\_\_\_\_

DATE STARTED:     /     /    

DATE COMPLETED:     /     /    

DESIGNED BY: NORTHCUIT

DATE TO CONSTRUCTION:     /     /    

APPROVED BY: WOODWARD

SYSTEM MAP No: 266078

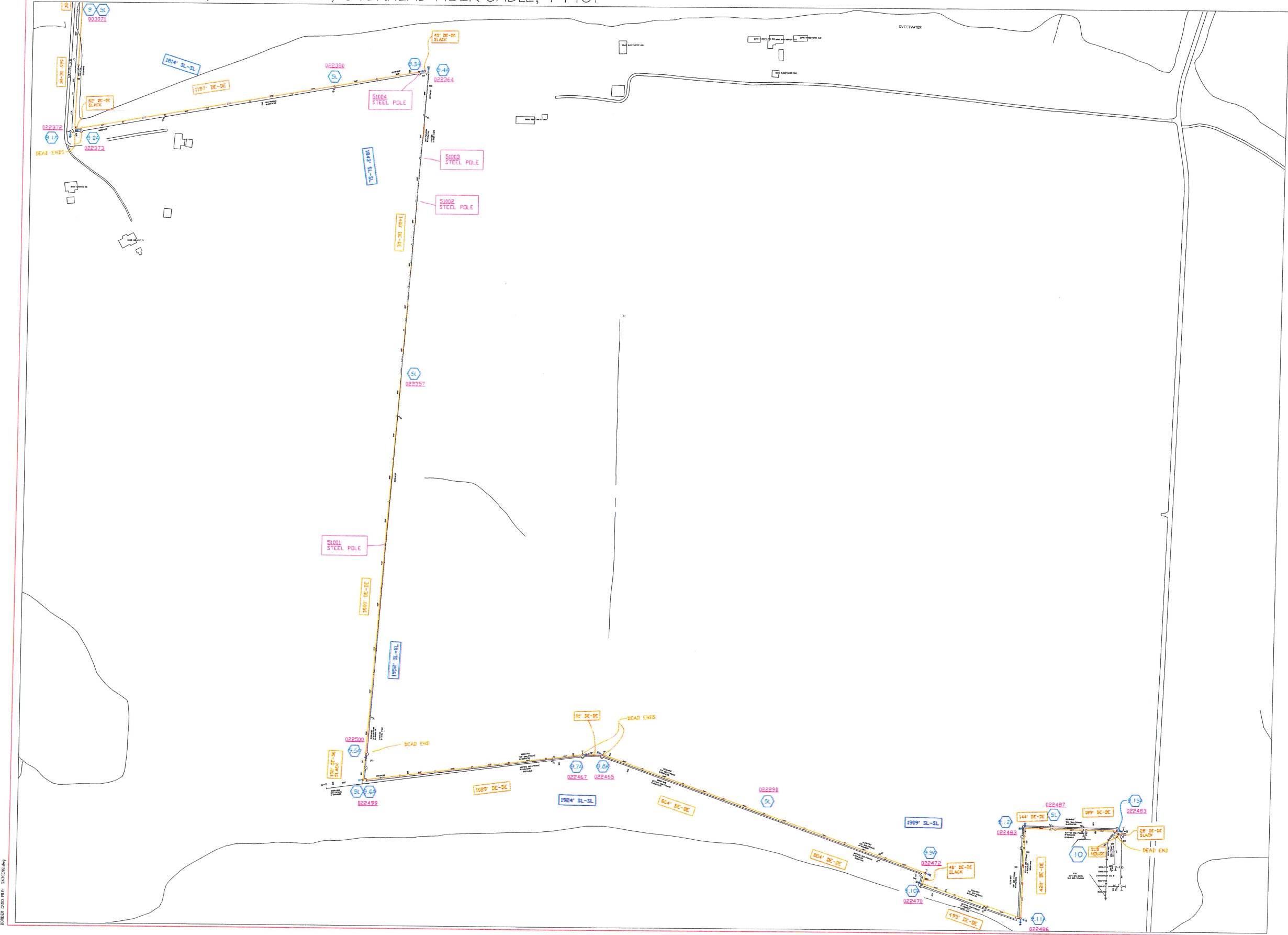
WORK ORDER No: 17-10-34



INSTALL FIBER 40" BELOW POWER SPACE. IF 40" IS UNATTAINABLE, INSTALL FIBER APPROXIMATELY 1' ABOVE HIGHEST COMMUNICATION ATTACHMENT POINT

PT #9 TO PT #10: (APPROX. 9769') OVERHEAD FIBER CABLE, 144CT

- SL = SLACK LOOP
- SB = SPLICE BOX
- X.XA = ANCHOR & DOWN/ OVERHEAD GUY



**NORTH LITTLE ROCK ELECTRIC DEPARTMENT**  
8th & Main Street (501) 372-0100

ACCOUNT NO: 107.2  
JOB TYPE: DIST. IMP.  
CUSTOMER: NLR  
ADDRESS: GALLOWAY SUBSTATION  
PHONE: ( )

NORTH ARROW

SCALE: NONE NTS: ☐

ELECTRICIAN: \_\_\_\_\_  
TELEPHONE: ( ) \_\_\_\_\_  
PAGER/MOBILE: ( ) \_\_\_\_\_

CKT: -- STATION: --

TREE TRIMMING NEEDED: ☐ YES ☐ NO

JOB STAKED ☐ YES ☒ NO

J / USE: ☒ TELEPHONE ☒ CATV

AR ONE CALL NO: \_\_\_\_\_

WATER \_\_\_\_\_ WASTE WATER \_\_\_\_\_

FOR CONSTRUCTION:  
FOREMAN: \_\_\_\_\_  
DATE STARTED: / /  
DATE COMPLETED: / /

DESIGNED BY: NORTHCUTT

DATE TO CONSTRUCTION: / /

APPROVED BY: WOODWARD

SYSTEM MAP No: 269076/269076/272076

WORK ORDER No: 17-10-34

GRID FILE: 17-10-34.dwg