

# CITY OF NORTH LITTLE ROCK FUNLAND DRIVE DRAINAGE PIPE REPLACEMENT NORTH LITTLE ROCK, ARKANSAS



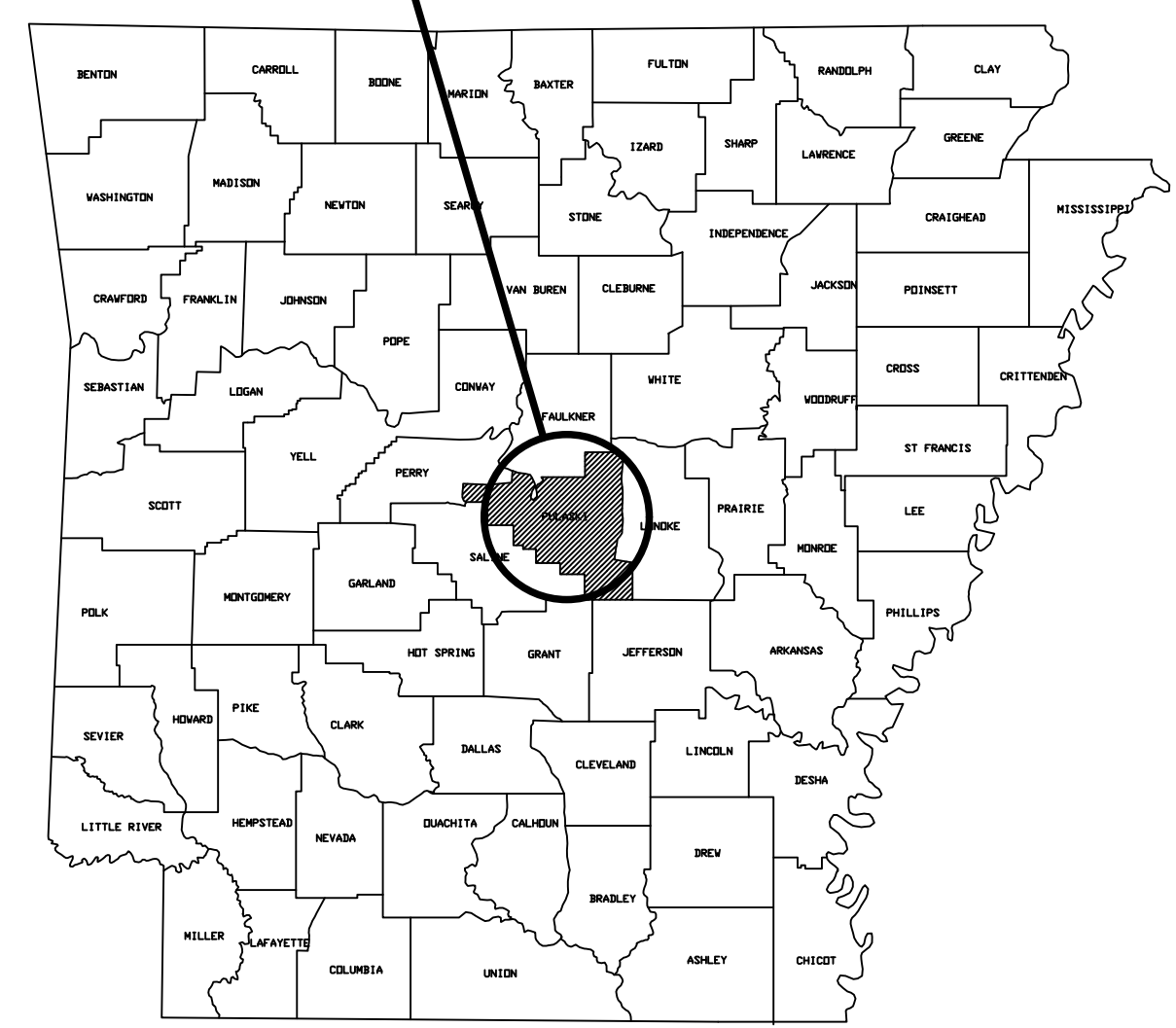
**CITY OF NORTH LITTLE ROCK**  
*Parks & Recreation Department*  
NORTH LITTLE ROCK, AR 72114  
2700 WILLOW STREET

FUNLAND DRIVE  
DRAINAGE PIPE REPLACEMENT

COVER SHEET  
AND  
INDEX OF SHEETS

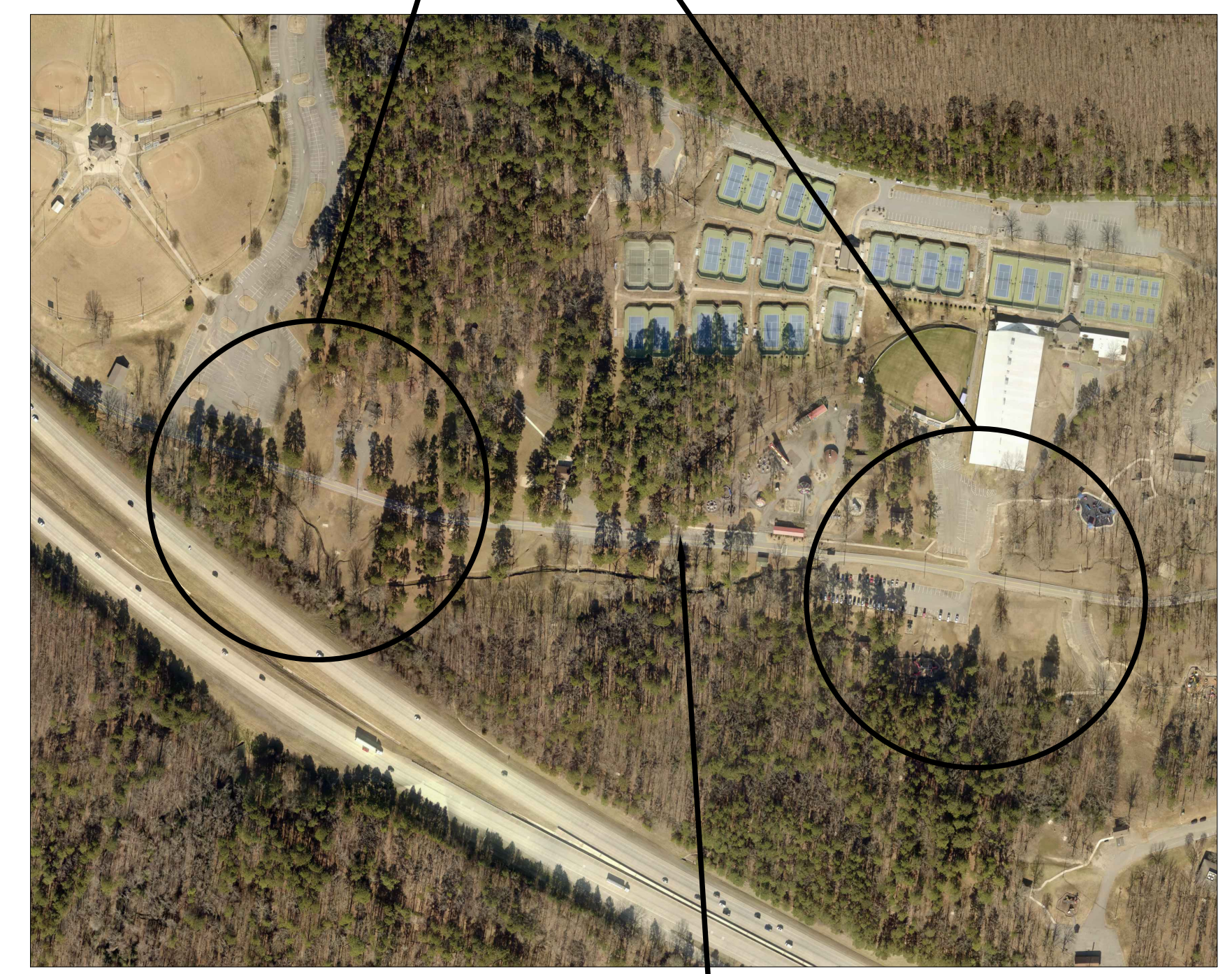
Sheet Number  
**1**

**PROJECT AREA**



**ARKANSAS  
STATE MAP**

**PROJECT SITE**

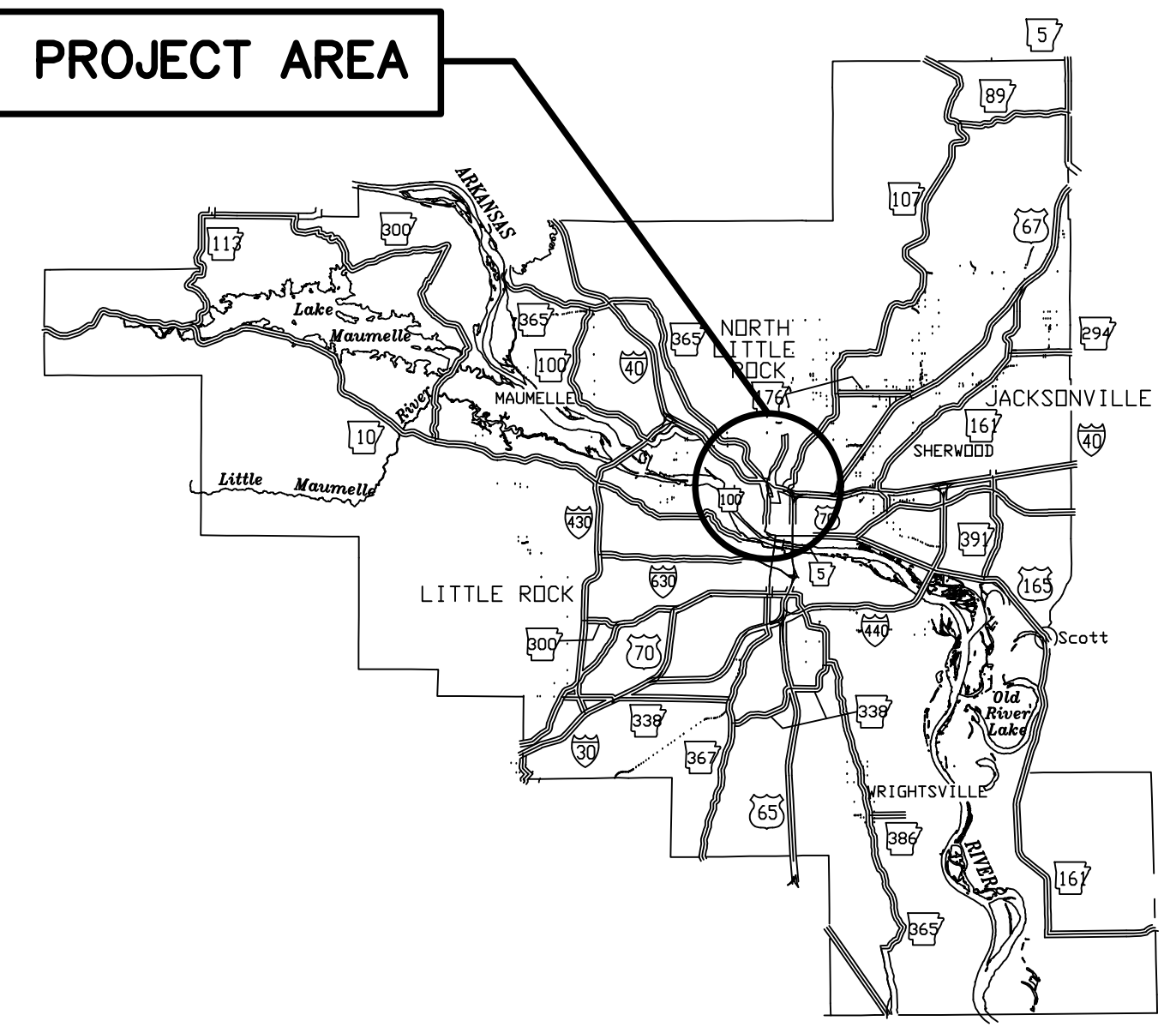


**LOCATION MAP**

FUNLAND DRIVE



**PROJECT AREA**



**PULASKI  
COUNTY MAP**

INDEX OF SHEETS	
SHEET	TITLE
1	COVER SHEET AND INDEX OF SHEETS
2	SITE NO. 1 PLAN DETAILS
3	SITE NO. 2 PLAN DETAILS
4	GENERAL NOTES & DETAILS

**City of North Little Rock  
October 2019**



GENERAL NOTES:

1. FLOWLINES WILL BE ESTABLISHED IN THE FIELD IN COORDINATION WITH CITY ENGINEER.
2. RIP-RAP MATERIAL USED SHALL BE RIP RAP #1 PER GRANITE MOUNTAIN QUARRIES SPECIFICATIONS.

APPROX. LIMITS OF ASPHALT REPAIR

GROUTED RIPRAP

EXIST. PIPE SIZE UNKNOWN

IN PLACE 72" x 48' CMP REMOVE AND INSTALL 75" x 43" x 48' RCP (CLASS V) CONNECT TO JUNCTION BOX

CONSTRUCT 9' x 9' JUNCTION BOX WITH OPENING ON EAST SIDE. SEE DETAIL.

CONCRETE DITCH CONNECTING ASPHALT SHOULDER TO OPENING IN JUNCTION BOX.



CITY OF NORTH LITTLE ROCK  
Engineering Department

NORTH LITTLE ROCK, AR 72114

500 WEST 13TH STREET

FUNLAND DRIVE  
DRAINAGE PIPE REPLACEMENT

SITE NO. 1  
PLAN  
DETAILS

DATE: 10/2019  
DESIGNED BY: DMC  
DRAWN BY: DMC  
SCALE: 1" = 20'

SHEET NUMBER

2





CITY OF NORTH LITTLE ROCK  
Engineering Department

NORTH LITTLE ROCK, AR 72114

500 WEST 13TH STREET

FUNLAND DRIVE  
DRAINAGE PIPE REPLACEMENT

SITE NO. 2  
PLAN  
DETAILS

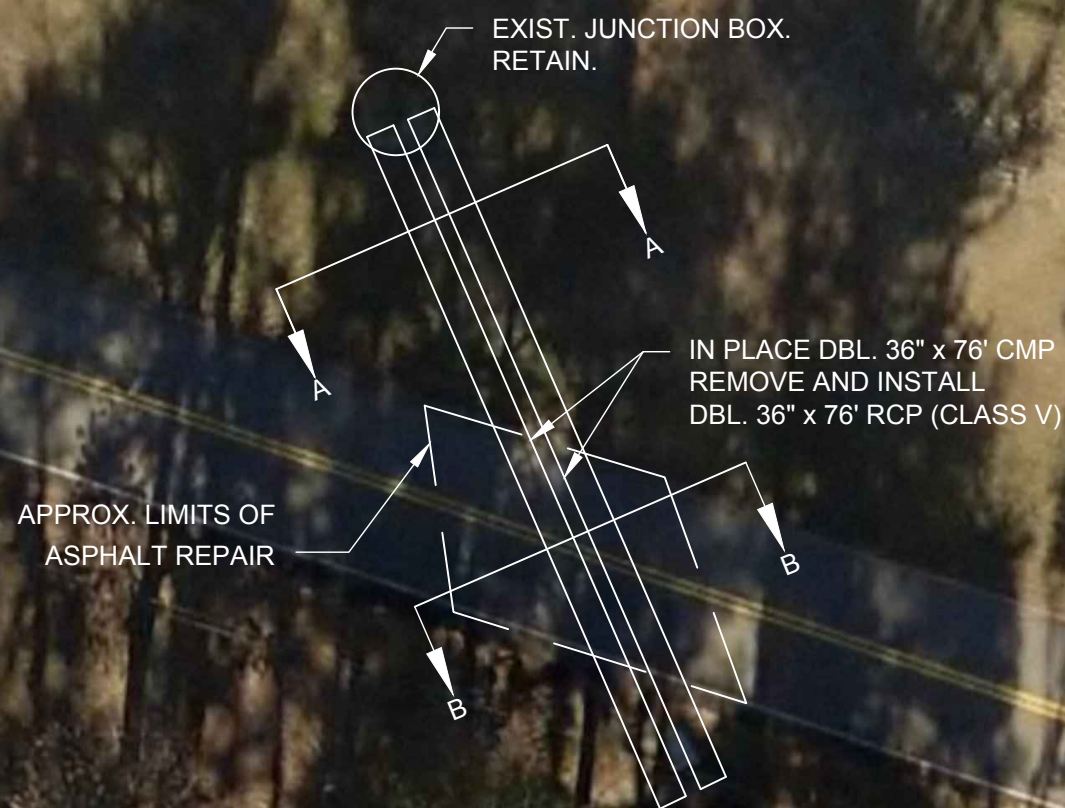
DATE: 10/2019  
DESIGNED BY: DMC  
DRAWN BY: DMC  
SCALE: 1" = 20'

SHEET NUMBER

3

GENERAL NOTES:

1. FLOWLINES WILL BE ESTABLISHED IN THE FIELD IN COORDINATION WITH CITY ENGINEER.



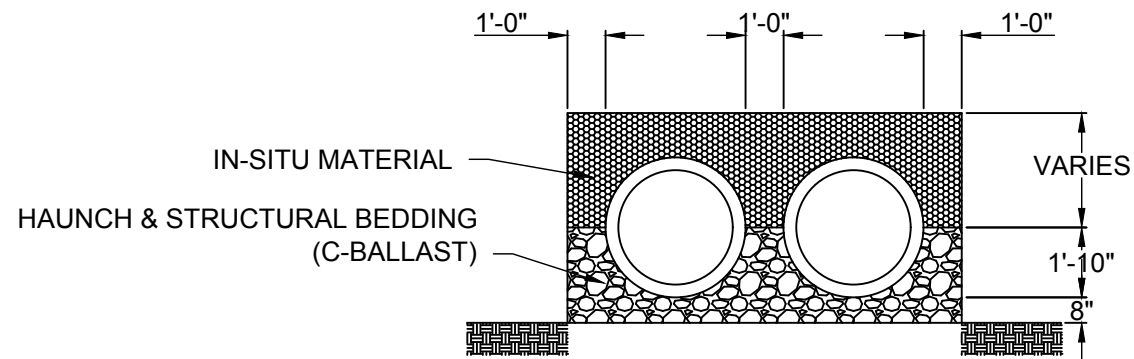


GENERAL NOTES:

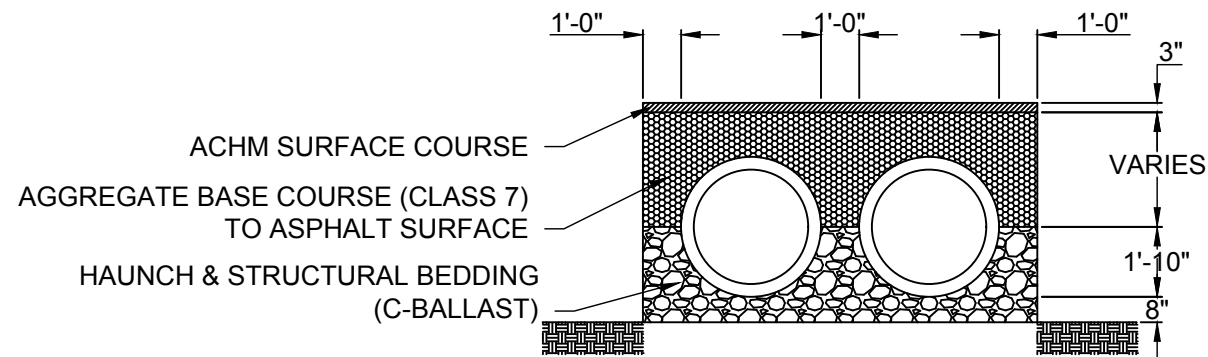
1. TRAFFIC CONTROL WILL BE HANDLED BY THE CITY. CONTRACTOR SHALL COORDINATE SCHEDULE AND CLOSURE TIMES WITH CITY ENGINEER AND TRAFFIC SERVICES PRIOR TO CONSTRUCTION.
2. CONTRACTOR IS RESPONSIBLE FOR LOCATING EXISTING UTILITIES WITHIN IMPACTED AREAS THROUGH ARKANSAS ONE-CALL.
3. FLOWLINES WILL BE ESTABLISHED IN THE FIELD IN COORDINATION WITH CITY ENGINEER.

SITE NO. 1 - CONCRETE JUNCTION BOX NOTES/REQUIREMENTS:

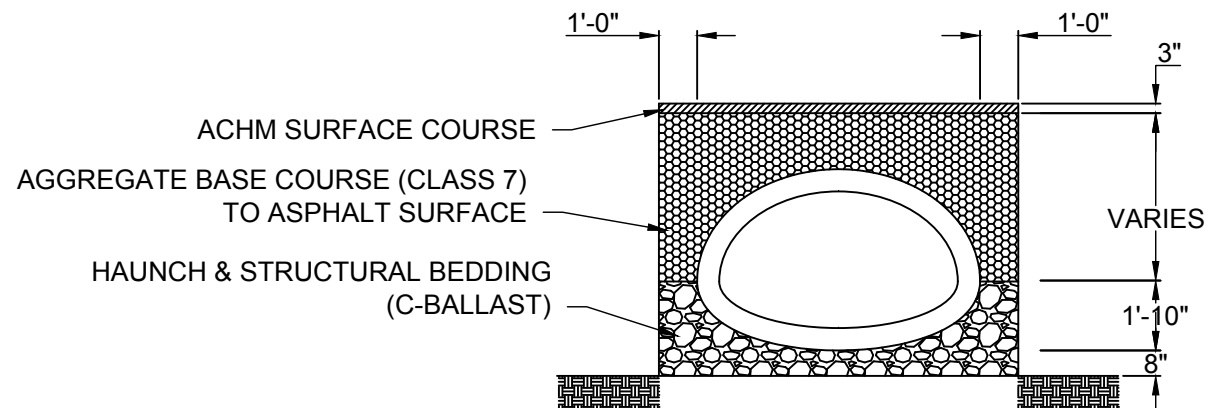
1. AFTER THE EXISTING PIPE BEND IS EXPOSED AND PRIOR TO CONSTRUCTION OF THE CONCRETE JUNCTION BOX ON THE SOUTH SIDE, THE CONTRACTOR SHALL COORDINATE WITH THE CHIEF CITY ENGINEER ON FINAL BOX SIZE. IT'S ESTIMATED TO REQUIRE A 9'X9' CONCRETE JUNCTION BOX WITH A DEPTH TO THE FLOWLINE BEING APPROXIMATELY 6.5' TO 7.0' DEEP.
2. CONTRACTOR SHALL STABILIZE THE EXISTING EXCAVATED SUBGRADE WITH MIRAFI HP270 AND APPROXIMATELY 8" C-BALLAST.
3. JUNCTION BOX BOTTOM SLAB SHALL BE 10" THICK, REINFORCED WITH ONE LAYER OF #6@10" O.C. EA. WAY, PLACED AS DIRECTED BY CITY ENGINEER.
4. JUNCTION BOX WALLS SHALL BE 8" THICK, REINFORCED WITH #5@10" O.C. EA. WAY, PLACED AS DIRECTED BY CITY ENGINEER.
5. JUNCTION BOX TOP SLAB SHALL BE 8" THICK, REINFORCED WITH ONE LAYER OF #6@6" O.C. EA. WAY, PLACED AS DIRECTED BY CITY ENGINEER.
6. MAXIMUM STOOL SPACING SHALL BE 4' OR LESS IN THE OPEN SIDE ON THE EAST END. DRILL AND GROUT 1 - #5 BAR/PER STOOL INTO WALL.(2 STOOLS REQUIRED).
7. CONCRETE SHOULDER SWALE TYING INTO THE CONCRETE JUNCTION BOX ON THE EAST END SHALL BE 6" THICK, PLACED ON TOP OF 6" COMPACTED AGGREGATE BASE COURSE CLASS 7, SUPPORTED BY COMPACTED SUBGRADE. CONCRETE SHALL BE REINFORCED WITH 6X6XW4XW4 WELDED WIRE FABRIC (WWF) FLAT SHEETS PLACED 2 1/2" BELOW TOP OF CONCRETE FINISHED SURFACE.



DBL. 36"x76' RCP BEDDING DETAIL  
SECTION A-A



DBL. 36"x76' RCP BEDDING DETAIL  
SECTION B-B



75"x43"x48' RCP BEDDING DETAIL  
UNDER ROAD