

CITY OF NORTH LITTLE ROCK, ARKANSAS  
COMMERCE DEPARTMENT  
Mary Beth Bowman, Director  
Amy Smith, Asst. Director for Procurement/Purchasing Agent  
Crystal Willis, Purchasing Agent



120 MAIN STREET, North Little Rock, AR 72114  
P.O. BOX 5757, North Little Rock, AR 72119  
501-975-8881 Phone  
501-975-8885 Fax

### INVITATION TO BID/PROPOSAL COVER SHEET

Bid Number : 20-3672 Date Issued: October 1, 2020  
Date & Time Bid Opening: Friday, October 16, 2020 at 10:30a.m.

Fiber Installation (from the Lakewood Substation at 4545 JFK Blvd.  
to the Corner of McCain and JFK)

Total Project Bid Price: \$ \_\_\_\_\_  
Itemized pricing sheet must also be completed.

Plans, specifications, proposal forms and other contract documents may be examined at the following locations:

- [www.nlr.ar.gov](http://www.nlr.ar.gov), click on the tab "Business", click on "Bids and Vendors" and then click on "Current Bids".
- Commerce Department, 120 Main Street, North Little Rock, Arkansas 72114.
- A five percent (5%) bid bond is required with the bid. A copy of bidder's current contractor's license and general liability insurance certificate must accompany bidding documents.
- Please submit all technical questions in writing to [jnorthcutt@nlr.ar.gov](mailto:jnorthcutt@nlr.ar.gov).
- General bid questions should be directed to the Commerce Department at 501-975-8881.

Responses to relevant questions will be posted on the Commerce web page at [www.nlr.ar.gov](http://www.nlr.ar.gov), click on the tab "Business", click on "Bids and Vendors" and then click on "Current Bids".

The City of North Little Rock encourages participation of small, minority, and woman own business enterprises in the procurement of goods, services, professional services, and construction, either as a general contractor or sub-contractor. It is further requested that whenever possible, majority contractors who require sub-contractors, seek qualified small, minority, and woman businesses to partner with them.

If you are obtaining this bid from our website, please be reminded that addendums may occur. It is therefore advisable that you review our listings for attachments including any changes to the bid.

#### EXECUTION OF BID

Upon signing this page, the organization certifies that they have read and agree to the requirements set forth in this bid including conditions set forth and pertinent information requests.

Name of Firm: \_\_\_\_\_ Phone No.: \_\_\_\_\_

Tax I.D. #: \_\_\_\_\_

Business Address: \_\_\_\_\_

Signature of Authorized Person: \_\_\_\_\_

Title: \_\_\_\_\_ Date: \_\_\_\_\_, 2020

**UNSIGNED COVER SHEETS STATEMENTS WILL BE REJECTED**

# Request for Bids

North Little Rock Electric Department (NLRED) is requesting separate bids for installation of fiber from the Lakewood Substation (4545 JFK Blvd) to the corner of McCain and JFK in North Little Rock. The project will be a turn-key job.

North Little Rock Electric Department is requesting bids for installation of AFL Mini-Span Cable 48 count single mode 12 tube from our Lakewood Substation to the corner of McCain and JFK Blvd. One span of 144 count single mode fiber will also be installed. The job will include splices at two different overhead locations, detailed on subsequent pages. The fiber will span approximately 3000 total feet, which does **NOT** include slack loops, splice boxes, building entrances, or sag. All slack loops and splice boxes will include 200 feet of fiber. All fiber to building end points must have pre-terminated pigtails with LC connectors. All fiber must be tested end to end, and recorded test results submitted before final payment. Any leftover equipment will be the property of NLRED.

North Little Rock Electric will supply maps with the route. These maps will include approximate span distances and clarify the number of dead-ends and tangent assemblies required per page. The project includes three steel poles, where banding material is allowed, along with numerous wood poles. See attached documents for North Little Rock Electric's specifications for fiber construction. The maximum span for this project is approximately 250'.

Contractor to supply all fiber, tangents, splice enclosures, dead-ends, patch panels, bolts, washers, nuts, etc. Contractor is responsible for all work permits.

Pricing requested will be broken out as follows, **which must include sales tax**:

- Quantity
- Equipment
- Manufacture
- Pricing per item
- Labor
- Fusion Fiber Splicing Per Fiber

It is the job of the contractor to verify all materials needed and their quantity except for the fiber. NLRED will supply fiber rack in substation house. Below is an estimated list of materials with quantities:

- Est. 3000' AFL Mini-Span 424 ADSS Cable 48 Count Single Mode 12 Tube Fiber (AE0489C520AA4)
- Est. 170' AFL Flex-Span ADSS Cable 144 Count Single Mode 12 Tube Fiber (AE14490620A08)
- Est. 14 AFL Dead Ends (ADESE400/424C)
- Est. 2 AFL Dead Ends (ADESE482/510C)
- Est. 17 AFL Trunnion Assemblies (ATGN420/474)
- Est. 1 AFL Fiber Storage Units for ADSS Fiber Optic Cable (FA000049)
- Est. 1 AFL Splice Enclosures (LG-250-U-O)
- Est. 2 AFL Splice Enclosures (LG-150-U-O)
- Est. 3 AFL Splice Trays (LL-2448-48S)
- Est. 8 AFL Splice Trays (LL-2450)

- Est. 3 Corning Closet Connector Housing (CCH-02U)
- Est. 12 Corning Slack Storage Cassette (CCH-CF)
- Est. 12 Corning Housing Panel (CCH-CP12-A9)
- Est. 126' Messenger and Lash Cable
- Other Miscellaneous Material

**\*Fiber footages do not take sag into account**

Description of Fiber Route & Splicing (Prints Shown on Next Page)

- **Page 1** - 144 CT Fiber terminated at Substation; travels UG to pole outside of substation in existing pipe. Travels one span headed east. 144 CT to be spliced with three separate 48 CT single mode fiber cables (2 existing, 1 new). Install 48 CT fiber cable shown on print. First 48 CT span to north to be bundled with existing 48 CT fiber using messenger wire and lash cable.
- **Page 2** – Install 48 CT Fiber overhead.
- **Page 3** – Install 48 CT Fiber overhead.
- **Page 4** – Install 48 CT Fiber overhead to intersection of JFK. Cut existing 48 CT Fiber going North-South. Splice new 48 CT fiber from west to existing 48 CT fiber going north. Splice existing 48 CT fiber from south to existing 48 CT fiber to east.

**\*\*\*ALL FIBER ATTACHMENTS TO BE INSTALLED 40" BELOW POWER SPACE\*\*\***

**BIDDERS ACKNOWLEDGE AND UNDERSTAND THAT UPON AWARD OF THE WINNING BID, THE SELECTED BIDDER WILL BE REQUIRED TO REVIEW AND SIGN A CONTRACT WITH THE CITY OF NORTH LITTLE ROCK PRIOR TO BEGINNING WORK.**

Please submit all questions in writing to [jnorthcutt@nlr.ar.gov](mailto:jnorthcutt@nlr.ar.gov)

Jared Northcutt  
North Little Rock Electric  
Distribution Design Electrical Engineer  
Office: 501-992-4092

CITY OF NORTH LITTLE ROCK, ARKANSAS  
 COMMERCE DEPARTMENT  
 Mary Beth Bowman, Director  
 Amy Smith, Assistant Director for Procurement  
 Crystal Willis, Admin. Sect./Assistant Purchasing Agent



120 MAIN STREET, North Little Rock, AR 72114  
 P.O. BOX 5757, North Little Rock, AR 72119  
 501-975-8881Phone  
 501-975-8885 Fax

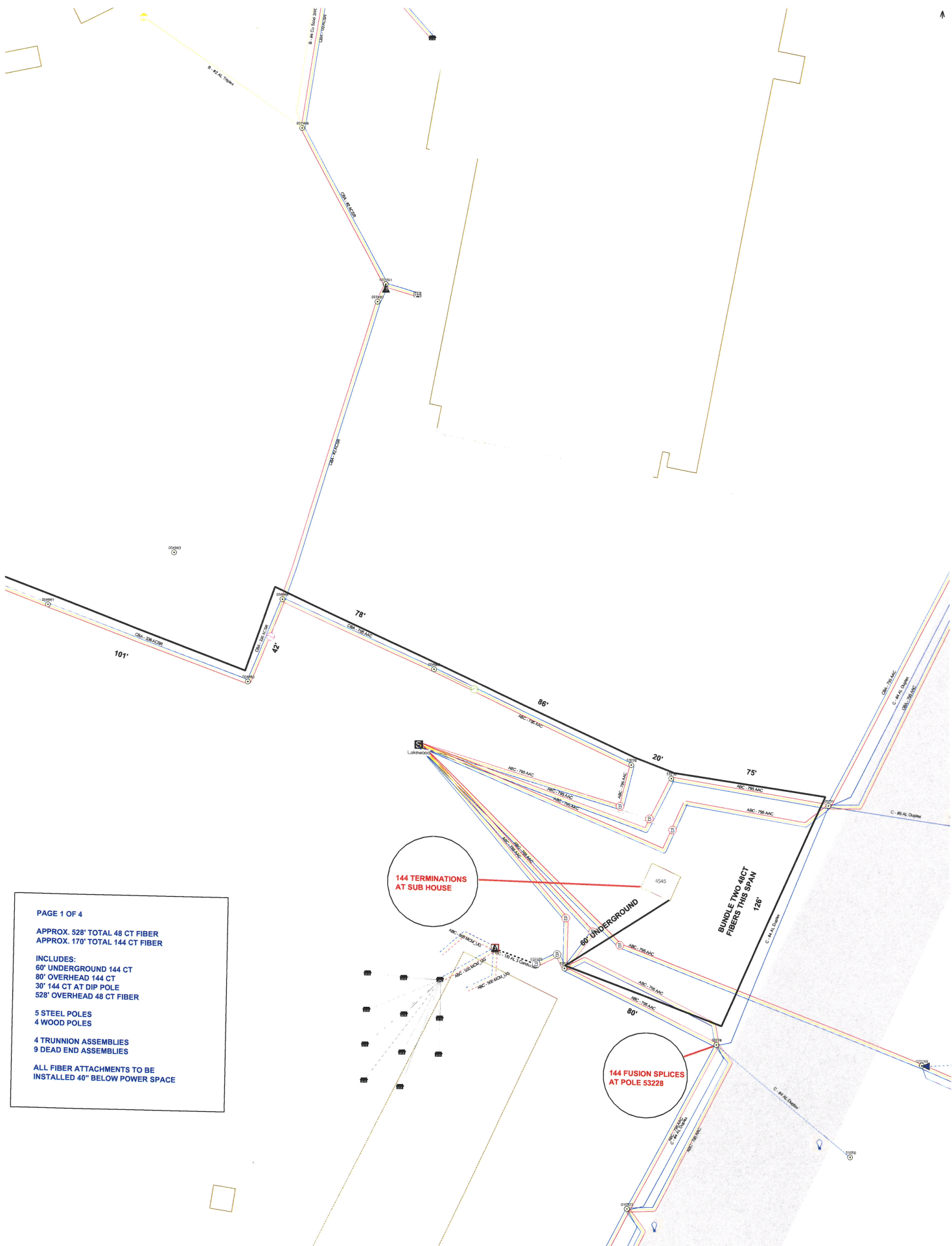
Fiber Installation (from the Lakewood Substation at 4545 JFK Blvd.  
 to the Corner of McCain and JFK)  
 Itemized Pricing Sheet (Must include sales tax)

1. Quantity: \$ \_\_\_\_\_
2. Equipment: \$ \_\_\_\_\_
3. Manufacture: \$ \_\_\_\_\_
4. Pricing per Item: It is the Job of the contractor to verify all materials needed and their quantity except for the fiber.

Estimated List of Materials with Quantities	Price (w/tax)
Est. 3000' AFL Mini-Span 424 ADSS Cable 48 Count Single Mode 12 Tube Fiber (AE0489C520AA4)	
Est. 170' AFL Flex-Span ADSS Cable 144 Count Single Mode 12 Tube Fiber (AE14490620A08)	
Est. 14 AFL Dead Ends (ADESE400/424C)	
Est. 2 AFL Dead Ends (ADESE482/510C)	
Est. 17 AFL Trunnion Assemblies (ATGN420/474)	
Est. 1 AFL Fiber Storage Units for ADSS Fiber Optic Cable (FA000049)	
Est. 1 AFL Splice Enclosures (LG-250-U-O)	
Est. 2 AFL Splice Enclosures (LG-150-U-O)	
Est. 3 AFL Splice Trays (LL-2448-48S)	
Est. 8 AFL Splice Trays (LL-2450)	
Est. 3 Corning Closet Connector Housing (CCH-02U)	
Est. 12 Corning Slack Storage Cassette (CCH-CF)	
Est. 12 Corning Housing Panel (CCH-CP12-A9)	
Est. 126' Messenger and Lash Cable	
Other Miscellaneous Material	

5. Labor: \$ \_\_\_\_\_
6. Fusion Fiber Splicing per Fiber: \$ \_\_\_\_\_





PAGE 1 OF 4

APPROX. 528' TOTAL 48 CT FIBER  
 APPROX. 170' TOTAL 144 CT FIBER

INCLUDES:

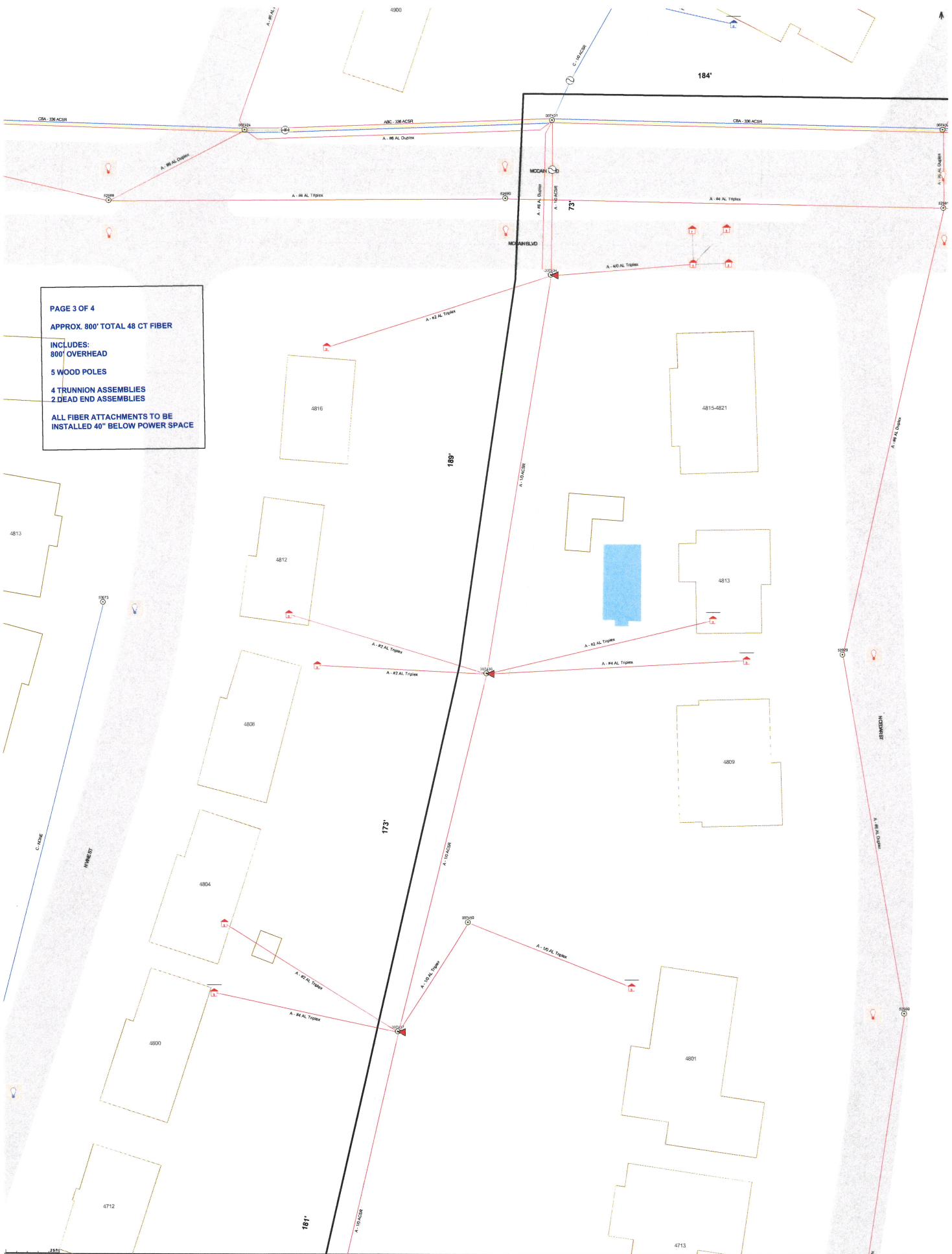
- 60' UNDERGROUND 144 CT
- 90' OVERHEAD 144 CT
- 30' 144 CT AT DIP POLE
- 528' OVERHEAD 48 CT FIBER

5 STEEL POLES  
 4 WOOD POLES

4 TRUNNION ASSEMBLIES  
 9 DEAD END ASSEMBLIES

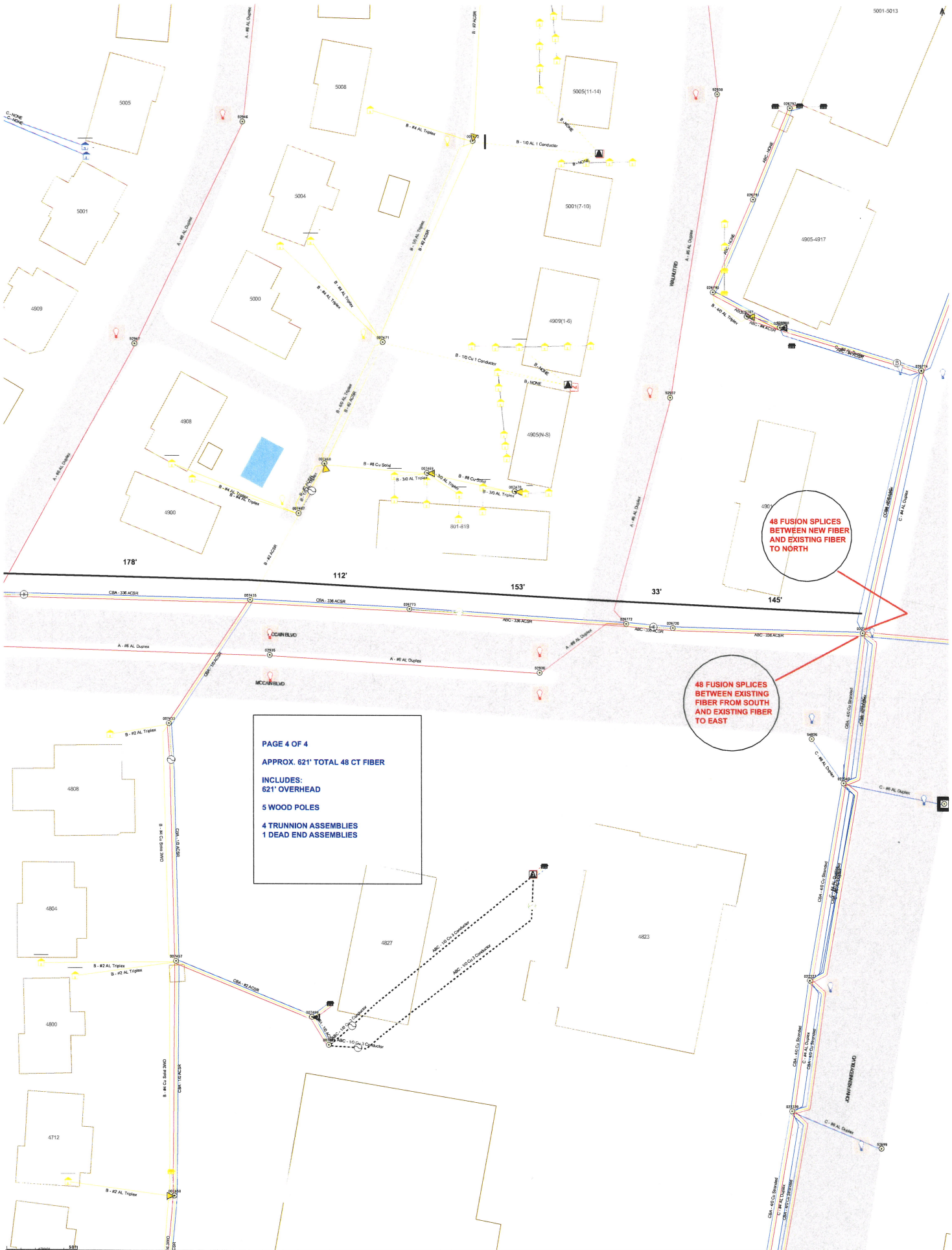
ALL FIBER ATTACHMENTS TO BE  
 INSTALLED 40" BELOW POWER SPACE





**PAGE 3 OF 4**  
**APPROX. 800' TOTAL 48 CT FIBER**  
**INCLUDES:**  
**800' OVERHEAD**  
**5 WOOD POLES**  
**4 TRUNNION ASSEMBLIES**  
**2 DEAD END ASSEMBLIES**  
**ALL FIBER ATTACHMENTS TO BE**  
**INSTALLED 40" BELOW POWER SPACE**

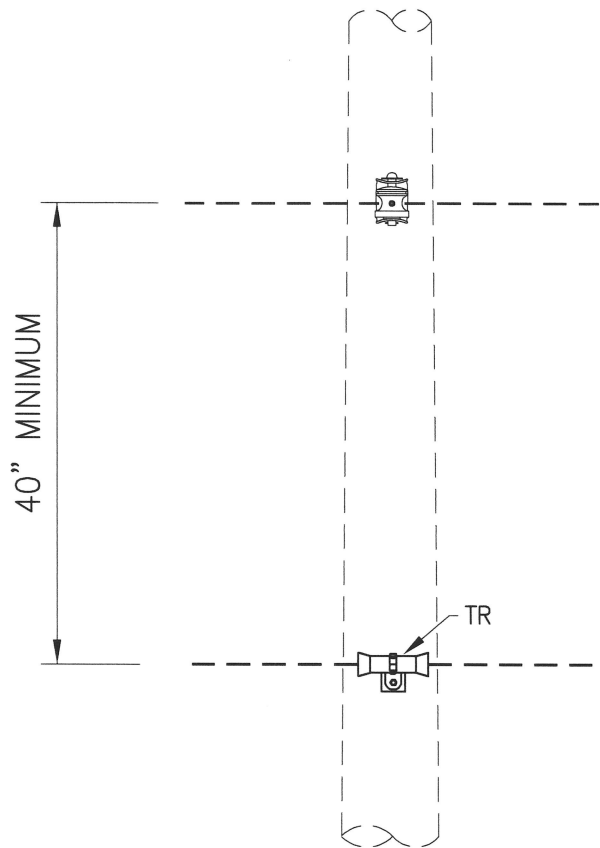
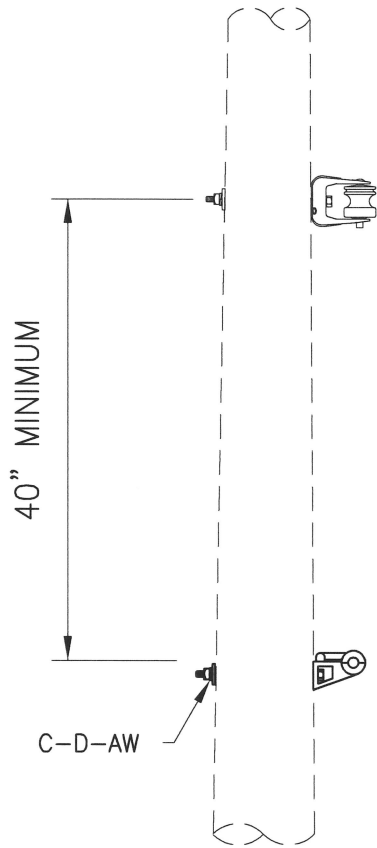




**PAGE 4 OF 4**  
**APPROX. 621' TOTAL 48 CT FIBER**  
**INCLUDES:**  
**621' OVERHEAD**  
**5 WOOD POLES**  
**4 TRUNNION ASSEMBLIES**  
**1 DEAD END ASSEMBLIES**

**48 FUSION SPICES**  
**BETWEEN NEW FIBER**  
**AND EXISTING FIBER**  
**TO NORTH**

**48 FUSION SPICES**  
**BETWEEN EXISTING**  
**FIBER FROM SOUTH**  
**AND EXISTING FIBER**  
**TO EAST**



**NOTE:**  
 ALL NEW POLES ARE REQUIRED TO  
 HAVE A GROUNDLINE POLE WRAP  
 AND A POLE TOP CAP INSTALLED.

**NOTE:**  
 FIBER ATTACHMENT MUST BE 40"  
 MINIMUM BELOW LOWEST SUPPLY  
 CONDUCTOR

ITEM	QUAN.	MATERIAL DESCRIPTION
C	1	MACHINE BOLT, 5/8" x REQ'D LENGTH
D	1	SQUARE WASHER, 2 1/4" x 2 1/4"
AW	1	LOCK WASHER (SPRING TYPE), AS REQ'D
TR	1	TRUNNION ASSEMBLY



NORTH LITTLE ROCK ELECTRIC CONSTRUCTION STANDARDS

TANGENT  
 ADSS FIBER

DATE: 7-14-2016

SHT No: 1

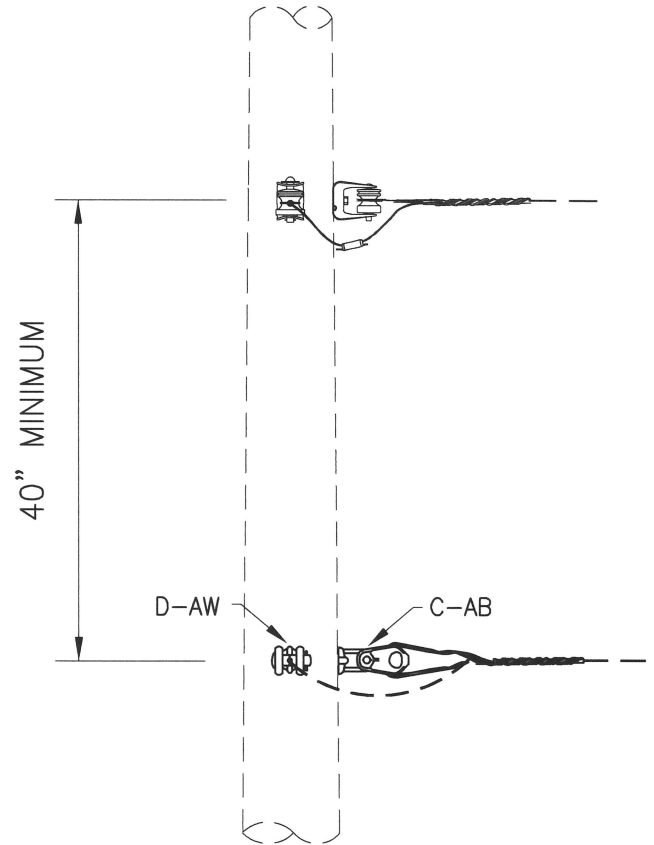
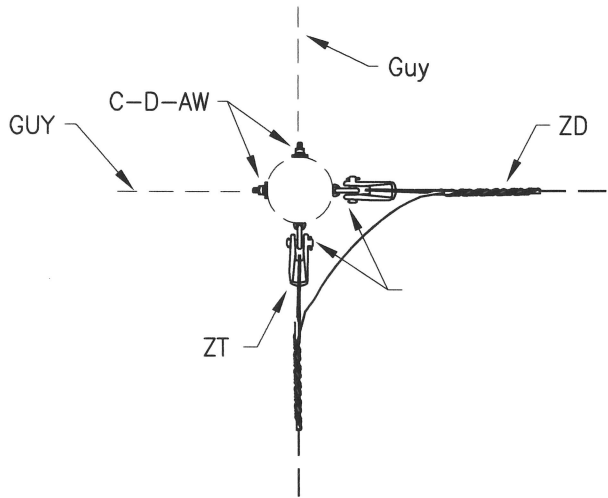
CONSTRUCTION  
 STANDARD No.

REVISION

0

Z-1





**NOTE:**  
ALL NEW POLES ARE REQUIRED TO HAVE A GROUNDLINE POLE WRAP AND A POLE TOP CAP INSTALLED.

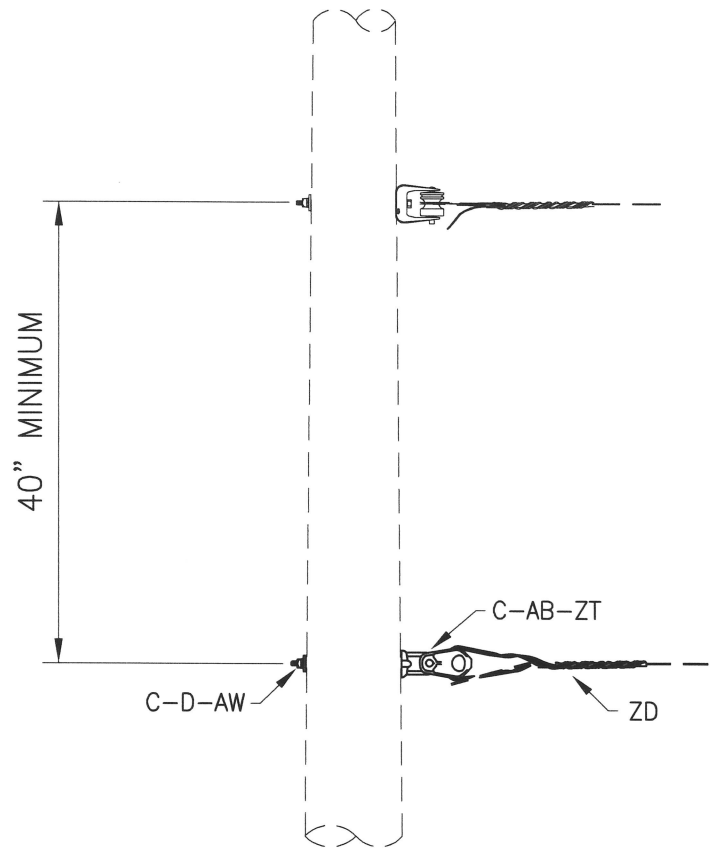
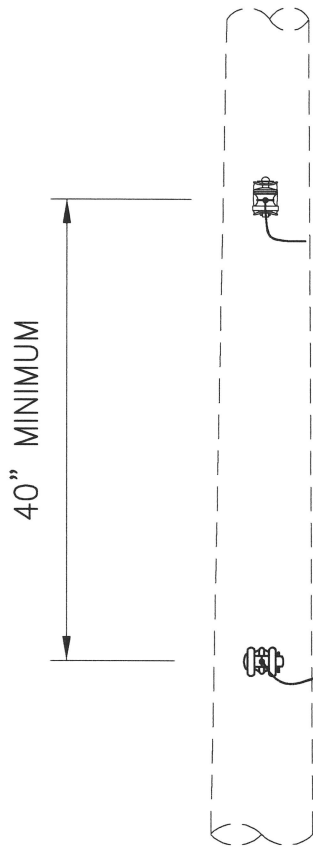
**NOTE:**  
FIBER ATTACHMENT MUST BE 40" MINIMUM BELOW LOWEST SUPPLY CONDUCTOR

ITEM	QUAN.	MATERIAL DESCRIPTION
C	2	MACHINE BOLT, 5/8" x REQ'D LENGTH
D	2	WASHER, 2 1/4" x 2 1/4"
AB	2	STD EYELET BOLT, 5/8"
AW	2	LOCK WASHER (SPRING TYPE), AS REQ'D
ZD	2	FIBER DEAD END ASSEMBLY
ZT	2	THIMBLE CLEVIS



NORTH LITTLE ROCK ELECTRIC CONSTRUCTION STANDARDS  
DEAD-END ANGLE - 16° TO 165° ANGLE  
ADSS FIBER

DATE: 7-20-2016	REVISION 0
SHT No: 1	
CONSTRUCTION STANDARD No.	Z-4



**NOTE:**  
ALL NEW POLES ARE REQUIRED TO HAVE A GROUNDLINE POLE WRAP AND A POLE TOP CAP INSTALLED.

**NOTE:**  
FIBER ATTACHMENT MUST BE 40" MINIMUM BELOW LOWEST SUPPLY CONDUCTOR

ITEM	QUAN.	MATERIAL DESCRIPTION
C	1	MACHINE BOLT, 5/8" x REQ'D LENGTH
D	1	WASHER, 2 1/4" x 2 1/4"
AB	1	STD EYELET BOLT, 5/8"
AW	1	LOCK WASHER (SPRING TYPE), AS REQ'D
ZD	1	FIBER DEAD END ASSEMBLY
ZT	1	THIMBLE CLEVIS

BORDER CADD FILE: NLR8511.DWG



NORTH LITTLE ROCK ELECTRIC CONSTRUCTION STANDARDS

SINGLE DEAD-END  
ADSS FIBER

DATE: 7-14-2016

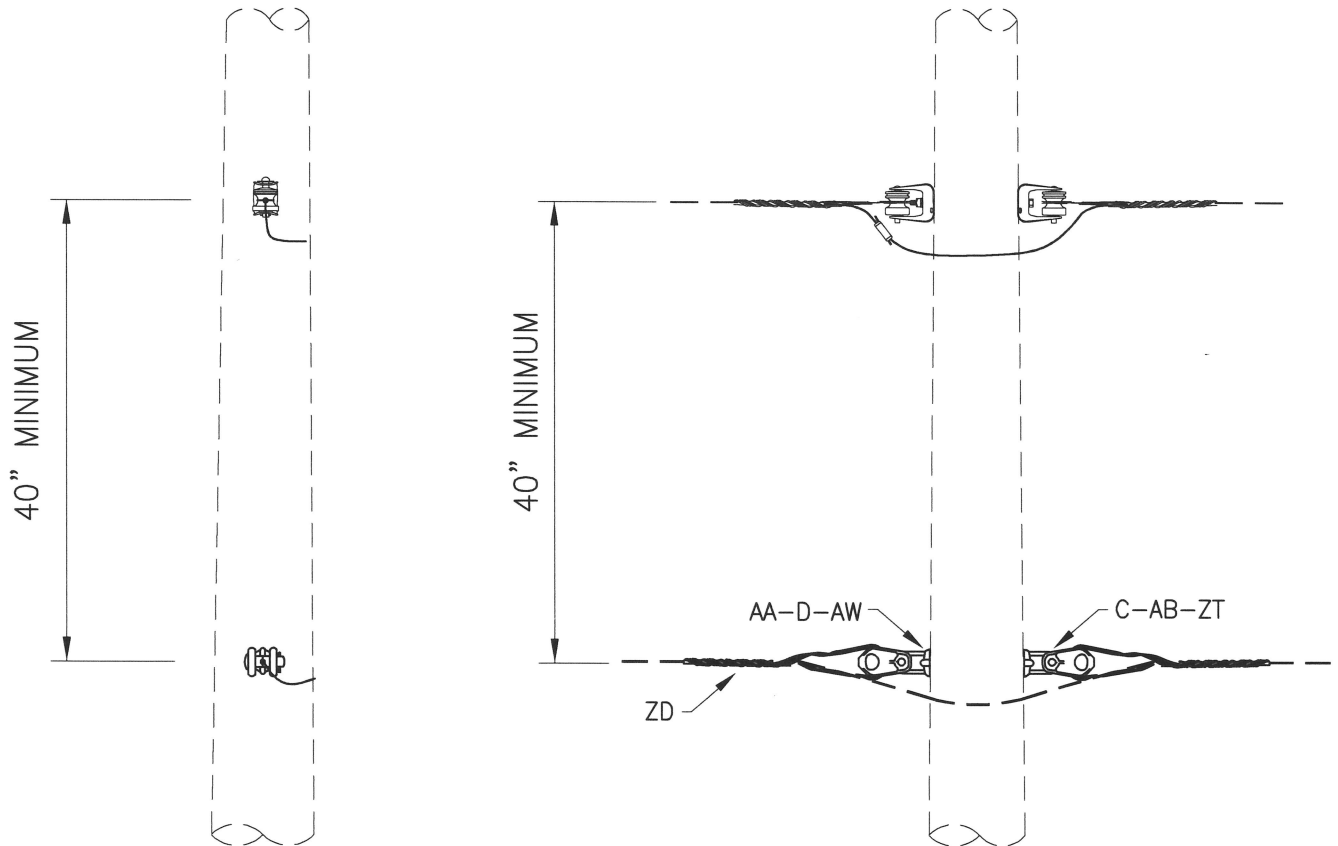
SHT No: 1

CONSTRUCTION  
STANDARD No.

REVISION

0

Z-5



**NOTE:**  
 ALL NEW POLES ARE REQUIRED TO  
 HAVE A GROUNDLINE POLE WRAP  
 AND A POLE TOP CAP INSTALLED.

**NOTE:**  
 FIBER ATTACHMENT MUST BE 40"  
 MINIMUM BELOW LOWEST SUPPLY  
 CONDUCTOR

ITEM	QUAN.	MATERIAL DESCRIPTION
C	1	MACHINE BOLT, 5/8" x REQ'D LENGTH
D	1	WASHER, 2 1/4" x 2 1/4"
AA	1	EYE NUT, 5/8"
AB	1	STD EYELET BOLT, 5/8"
AW	1	LOCK WASHER (SPRING TYPE), AS REQ'D
ZD	2	FIBER DEAD END ASSEMBLY
ZT	2	THIMBLE CLEVIS



NORTH LITTLE ROCK ELECTRIC CONSTRUCTION STANDARDS

DOUBLE DEAD-END  
 ADSS FIBER

DATE: 7-14-2016

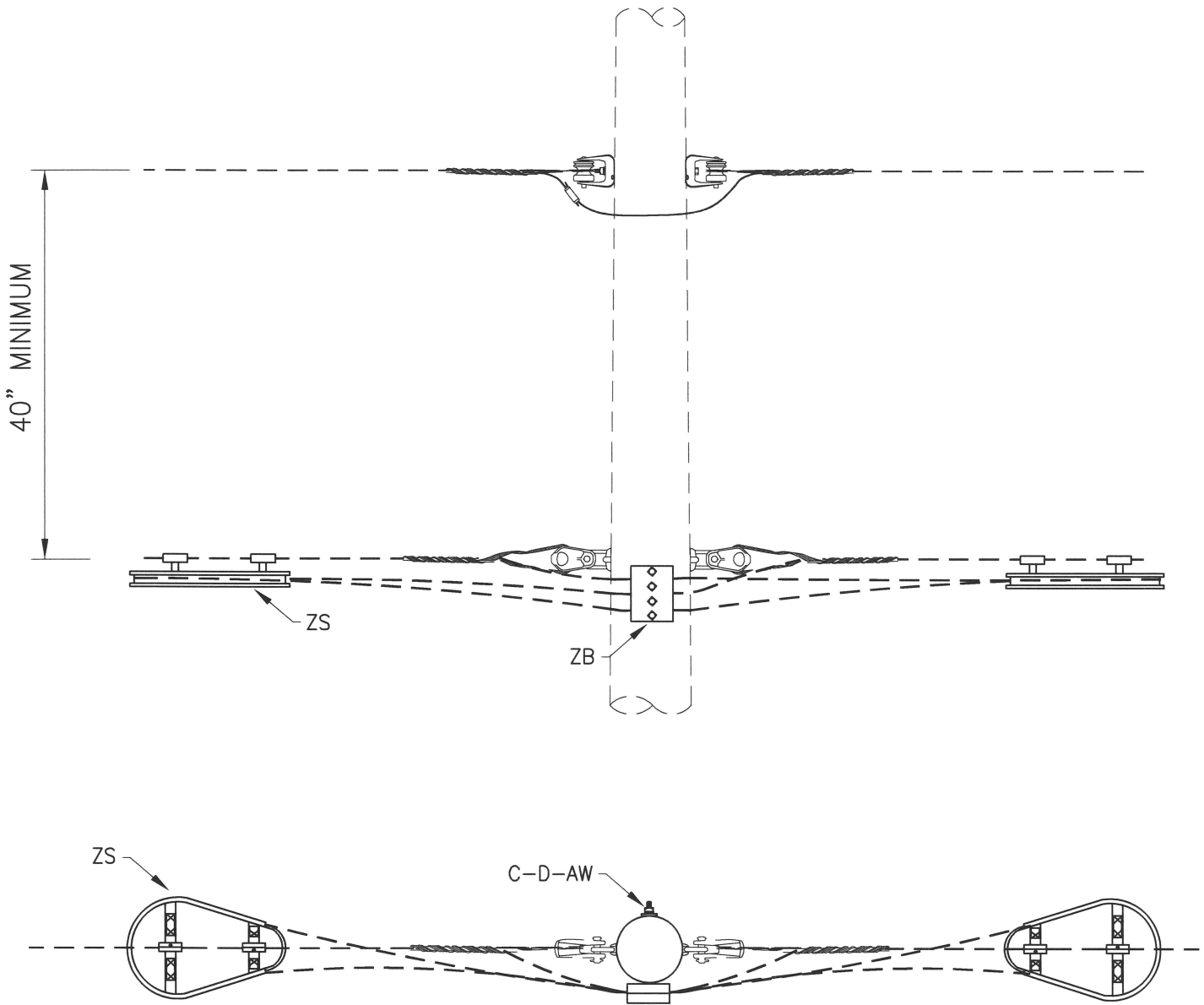
SHT No: 1

CONSTRUCTION  
 STANDARD No.

REVISION

0

Z-6



**NOTE:**  
 ALL NEW POLES ARE REQUIRED TO  
 HAVE A GROUNDLINE POLE WRAP  
 AND A POLE TOP CAP INSTALLED.

**NOTE:**  
 FIBER ATTACHMENT MUST BE 40"  
 MINIMUM BELOW LOWEST SUPPLY  
 CONDUCTOR

ITEM	QUAN.	MATERIAL DESCRIPTION
C	1	MACHINE BOLT, 5/8" x REQ'D LENGTH
D	1	WASHER, 2 1/4" x 2 1/4"
AW	1	LOCK WASHER (SPRING TYPE), AS REQ'D
ZB	1	FIBER MOUNTING BRACKET
ZS	2	FIBER STORAGE UNIT

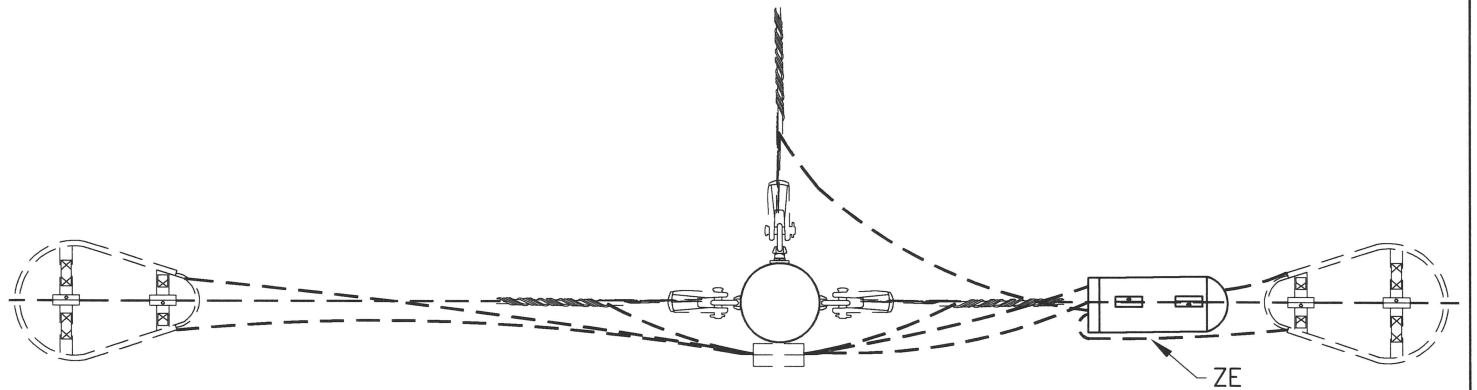
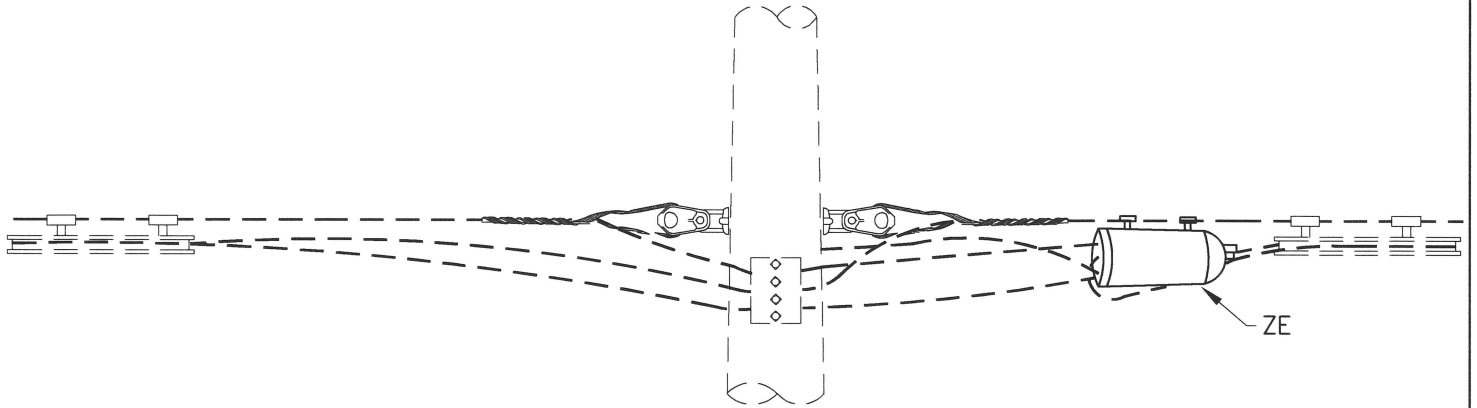
BORDER CADD FILE: NLR8511.DWG



NORTH LITTLE ROCK ELECTRIC CONSTRUCTION STANDARDS  
 STORAGE UNIT  
 ADSS FIBER

DATE: 7-21-2016  
 SHT No: 1  
 CONSTRUCTION STANDARD No.


REVISION  
 0  
 ZQ-1



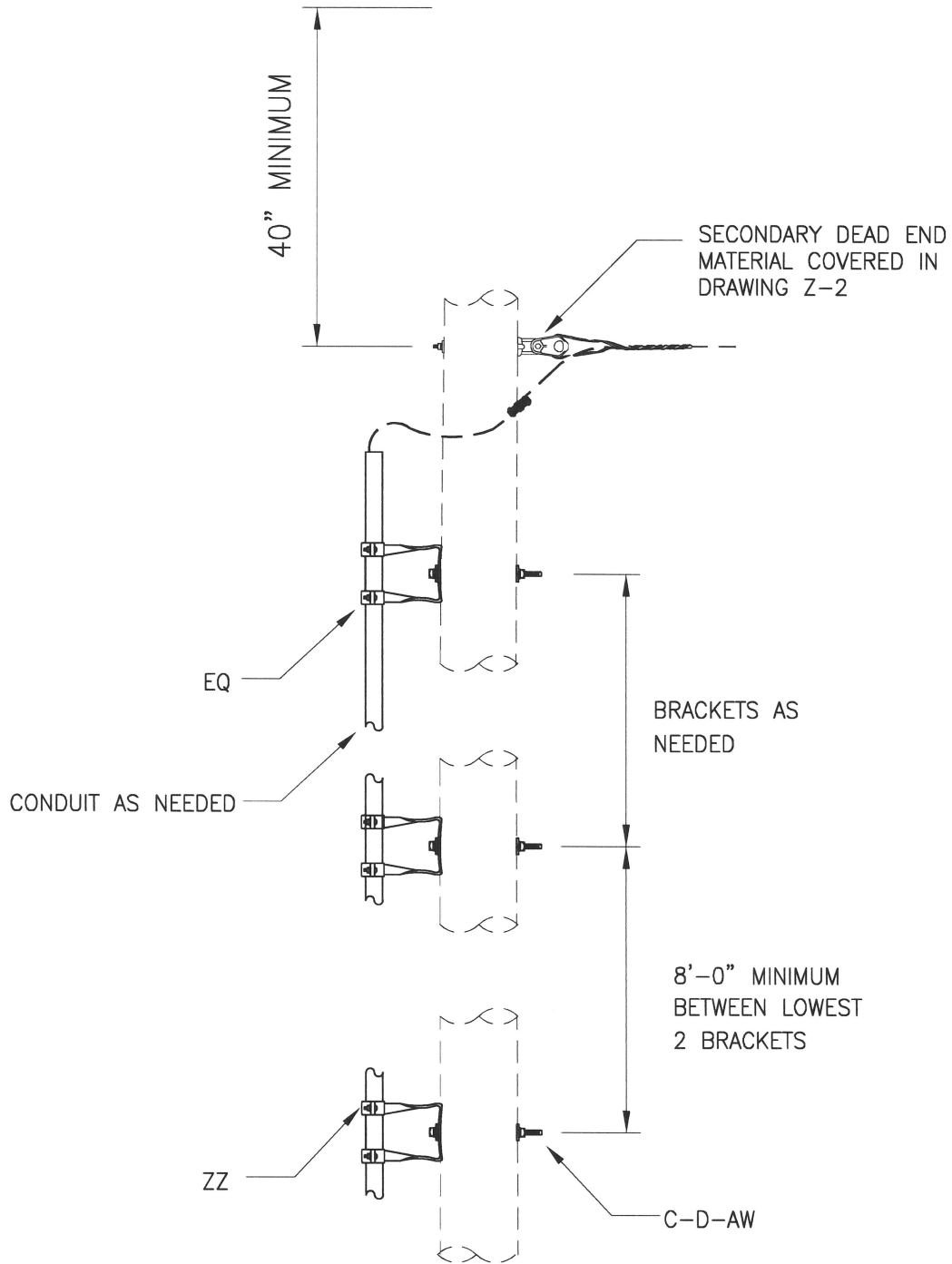
**NOTE:**  
 ALL NEW POLES ARE REQUIRED TO  
 HAVE A GROUNDLINE POLE WRAP  
 AND A POLE TOP CAP INSTALLED.

**NOTE:**  
 FIBER ATTACHMENT MUST BE 40"  
 MINIMUM BELOW LOWEST SUPPLY  
 CONDUCTOR

BORDER CADD FILE: NLR8511.DWG

ITEM	QUAN.	MATERIAL DESCRIPTION			
ZE	1	FIBER SPLICE ENCLOSURE			
		NORTH LITTLE ROCK ELECTRIC CONSTRUCTION STANDARDS SPLICE ENCLOSURE ADSS FIBER		DATE: 7-25-2016	REVISION
				SHT No: 1	0
				CONSTRUCTION STANDARD No.	ZQ-2





**NOTE:**  
 ALL NEW POLES ARE REQUIRED TO  
 HAVE A GROUNDLINE POLE WRAP  
 AND A POLE TOP CAP INSTALLED.

**NOTE:**  
 FIBER ATTACHMENT MUST BE 40"  
 MINIMUM BELOW LOWEST SUPPLY  
 CONDUCTOR

ITEM	QUAN.	MATERIAL DESCRIPTION
C	4	MACHINE BOLT, 5/8" x REQ'D LENGTH
D	4	WASHER, 2 1/4" x 2 1/4"
AW	4	LOCK WASHER (SPRING TYPE), AS REQ'D
EQ	4	CONDUIT BRACKET
ZZ	4	2" ONE HOLE PIPE STRAP W/ BOLT

BORDER CADD FILE: NLR8511.DWG



NORTH LITTLE ROCK ELECTRIC CONSTRUCTION STANDARDS

RISER  
 ADSS FIBER

DATE: 7-20-2016

SHT No: 1

CONSTRUCTION  
 STANDARD No.

REVISION

0

ZU-1

## GENERAL TERMS AND CONDITIONS FOR THE CITY OF NORTH LITTLE ROCK, AR

1. When submitting an "Invitation to Bid," the bidder warrants that the commodities covered by the bid shall be free from defects in material and workmanship under normal use and service. In addition, bidder must deliver new commodities of the latest design and model, unless otherwise specified in the "Invitation to Bid."
2. Prices quoted are to be net process, and when an error is made in extending total prices, the City may accept the bid for the lesser amount whether reflected by extension or by the correct multiple of the unit price.
3. Discounts offered will be taken when the City qualifies for such. The beginning date for computing discounts will be the date of invoice or the date of delivery and acceptance, whichever is later.
4. When bidding other than the brand and/or model specified in the "Invitation to Bid," the brand and/or model number must be stated by that item in the "Invitation to Bid," and descriptive literature be submitted with the bid.
5. The City reserves the right to reject any and all bids.
6. The Purchasing office reserves the right to award items, all or none, or by line item(s).
7. Quality, time and probability of performance may be factors in making an award.
8. Bid quotes submitted will remain firm for 30 calendar days from bid opening date; however, the prices may remain firm for a longer period of time if mutually agreeable between bidder and the Department of Commerce.
9. Bidder must submit a completed signed copy of the front page of the "Invitation to Bid" and must submit any other information required in the "Invitation to Bid."
10. In the event a contract is entered into pursuant to the "Invitation to Bid," the bidder shall not discriminate against any qualified employee or qualified applicant for employment because of race, sex, color, creed, national origin or ancestry. The bidder must include in any and all subcontracts a provision similar to the above.
11. Sales or use tax is not to be included in the bid price, but is to be added by the vendor to the invoice billing to the City. Although use tax is not to be included in this bid, vendors are to register and pay tax direct to the Arkansas State Revenue Department.
12. Prices quoted shall be "Free on Board" (F.O.B.) to destination at designated facility in North Little Rock. Charges may not be added after the bid is opened.
13. In the event of two or more identical low bids, the contract may be awarded arbitrarily or for any reason to any of such bidders or split in any proportion between them at the discretion of the Department of Commerce..
14. Specifications furnished with this Invitation are intended to establish a desired quality or performance level, or other minimum dimensions and capacities, which will provide the best product available at the lowest possible price. Other than designated brands and/or models approved as equal to designated products shall receive an equal consideration.
15. Samples of items when required, must be furnished free, and, if not called for within 30 days from date of bid opening, will become property of the City.
16. Bids will not be considered if they are:
  1. Submitted after the bid's opening time.
  2. Submitted electronically or faxed (unless authorized by Purchasing Agent).
17. Guarantees and warranties should be submitted with the bid, as they may be a consideration in making an award.

18. **CONSTRUCTION**

- A. Contractor is to supply the City with evidence of having and maintaining proper and complete insurance, specifically Workman's Compensation Insurance in accordance with the laws of the State of Arkansas, Public Liability and Property Damage. All premiums and cost shall be paid by the Contractor. In no way will the City be responsible in case of accident.
- B. When noted, a Certified check or bid bond in the amount of 5% of total bid shall accompany bid.
- C. A Performance Bond equaling the total amount of any bid exceeding \$35,000.00 must be provided for any contract for the repair, alteration or erection of any public building, public structure or public improvement (pursuant to Arkansas Code Annotated Section 22-9-203).

19. **LIQUIDATED DAMAGES** - Liquidated damages shall be assessed beginning on the first day following the maximum delivery or completion time entered on this bid form and/or provided for by the plans and specifications.

20. **AMBIGUITY IN BID** - Any ambiguity in any bid as the result of omission, error, lack of clarity or non-compliance by the bidder with specifications, instructions, and all conditions of bidding shall be construed in the light most favorable to the City.

21. The bid number should be stated on the face of the sealed bid envelope. If it is not, the envelope will have to be opened to identify.

22. Whenever a bid is sought seeking a source of supply for a specified period of time for materials and services, the quantities of usage shown are estimated ONLY. No guarantee or warranty is given or implied by the participants as to the total amount that may or may not be purchased from any resulting contracts. These quantities are for the bidders information ONLY and will be used for tabulation and presentation of bid and the participant reserves the right to increase or decrease quantities as required.

23. The City of North Little Rock reserves the right to reject any and all bids, to accept in whole or in part, to waive any informalities in bids received, to accept bids on materials or equipment with variations from specifications in those cases where efficiency of operation will not be impaired, and unless otherwise specified by the bidder, to accept any item in the bid. If unit prices and extensions thereof do not coincide, the City of North Little Rock may accept the bid for the lesser amount whether reflected by the extension or by the correct multiple of the unit price.

24. Additional information or bid forms may be obtained from:  
COMMERCE DEPARTMENT, 120 Main Street, P.O. Box 5757, North Little Rock, Arkansas 72119 (501)975-8881  
[www.nlr.ar.gov](http://www.nlr.ar.gov)

**Bidding documents must be submitted on or before the bid's opening date and time. Unless noted, bids must be sealed and mailed or delivered to:**

**Commerce Department  
120 Main Street (P.O. Box 5757)  
North Little Rock, AR 72119**