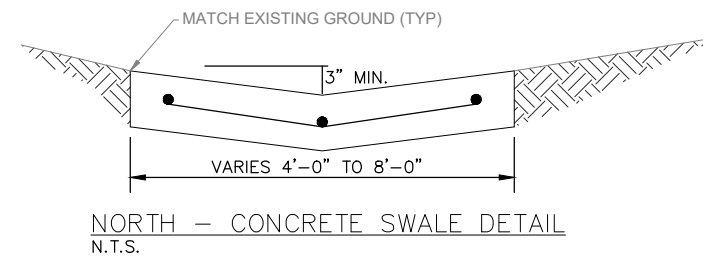
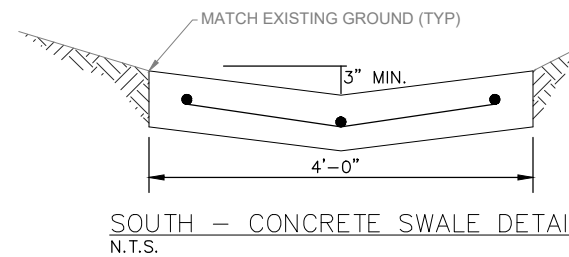


RCP WEST SIDE REMOUNT ROAD (Sta. 0+00 - Sta. 1+20)

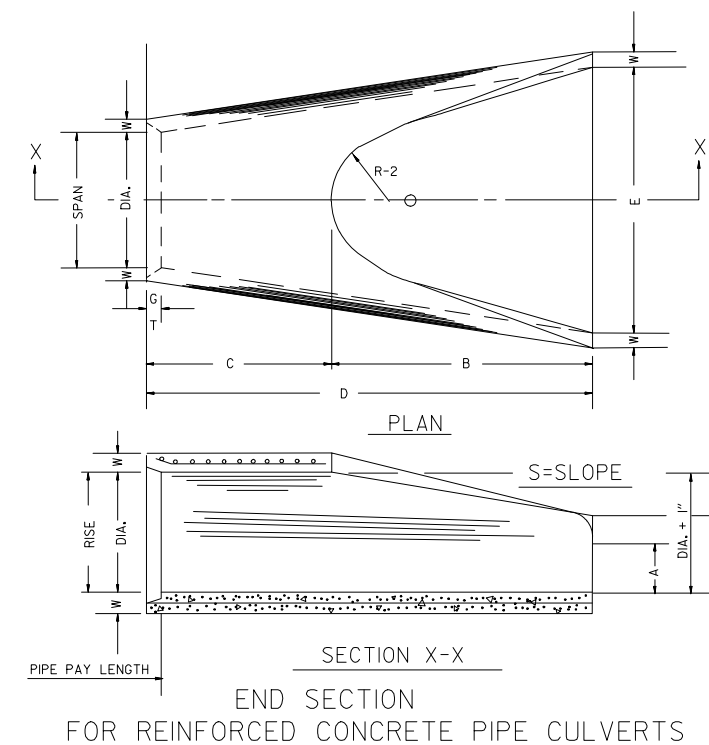
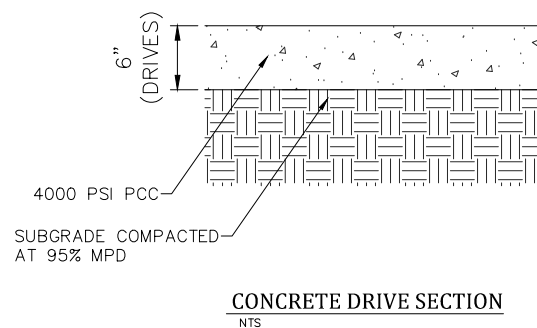
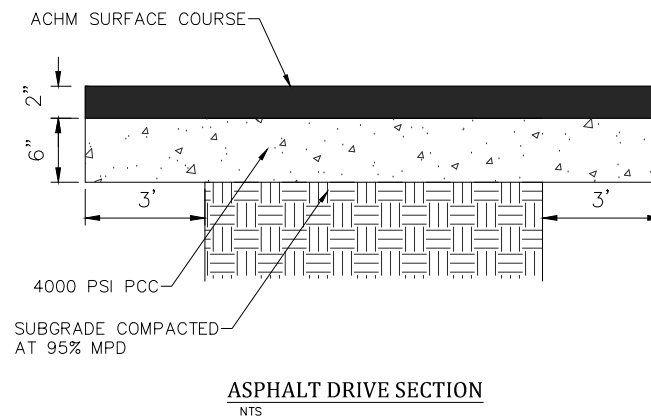
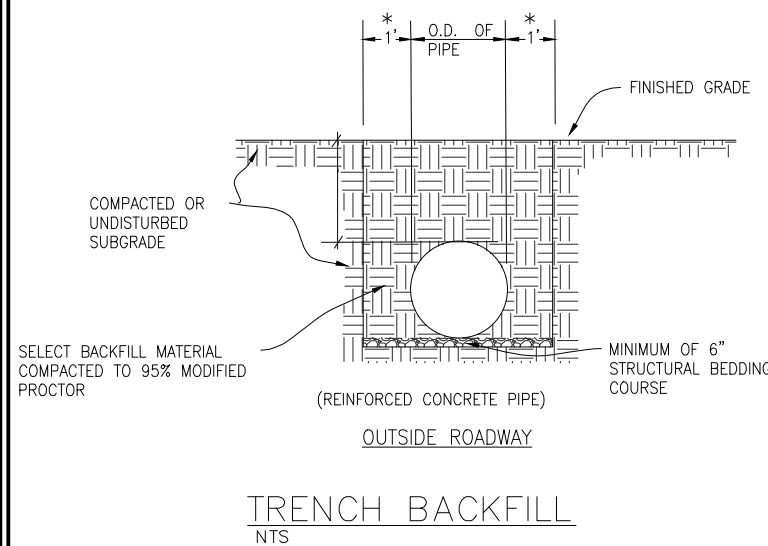
- NOTES:
- CONTRACTOR TO RESOD AREAS DISTURBED DURING CONSTRUCTION.
 - LOW AREAS IN THE CONSTRUCTION AREA TO BE FILLED SO THAT THERE IS NO WATER PONDING.



NOTE:
4" THICK ~ 3000 PSI REINFORCED
CONCRETE w/NO.3 BARS
ON 18" CENTERS BOTH WAYS

TABLE OF DIMENSIONS

DIA.	WALL	A	B	C	D	E	S	DIA. + 1"	P	R-1	R-2	G-T	WT.	h
18"	2 1/2"	9"	2'-3"	3'-10"	6'-1"	3'-0"	3:1	19"	29"	15 1/2"	12"	2"	1000	1'-0 1/2"
24"	3"	9 1/2"	3'-7 1/2"	2'-6"	6'-1 1/2"	4'-0"	3:1	25"	33 3/8"	16 1/8"	14"	2 1/2"	1600	1'-1 1/2"



HALFF
5318 John F. Kennedy Blvd.
North Little Rock, Arkansas 72116
TEL (501) 801-2691

Revision No.	Date	Description

STATE OF ARKANSAS
REGISTERED PROFESSIONAL ENGINEER
No. 9418
BRIAN L. JONES
2020-06-15



Project No.: 036156
Issued: AUGUST 2019
Drawn By: GC
Checked By: BV
Scale: 1"=10'
Sheet Title
PLAN, PROFILE, & DETAILS
15 REMOUNT ROAD
C3
Sheet Number