

RANDOLPH ROAD REHABILITATION

NORTH LITTLE ROCK, AR



JUNE 2021

INDEX OF SHEETS	
SHEET	TITLE
1	COVER SHEET
2	SITE PLAN
3	DETAILS 1
4	DETAILS 2



CITY OF NORTH LITTLE ROCK
Engineering Department

NORTH LITTLE ROCK, AR 72114

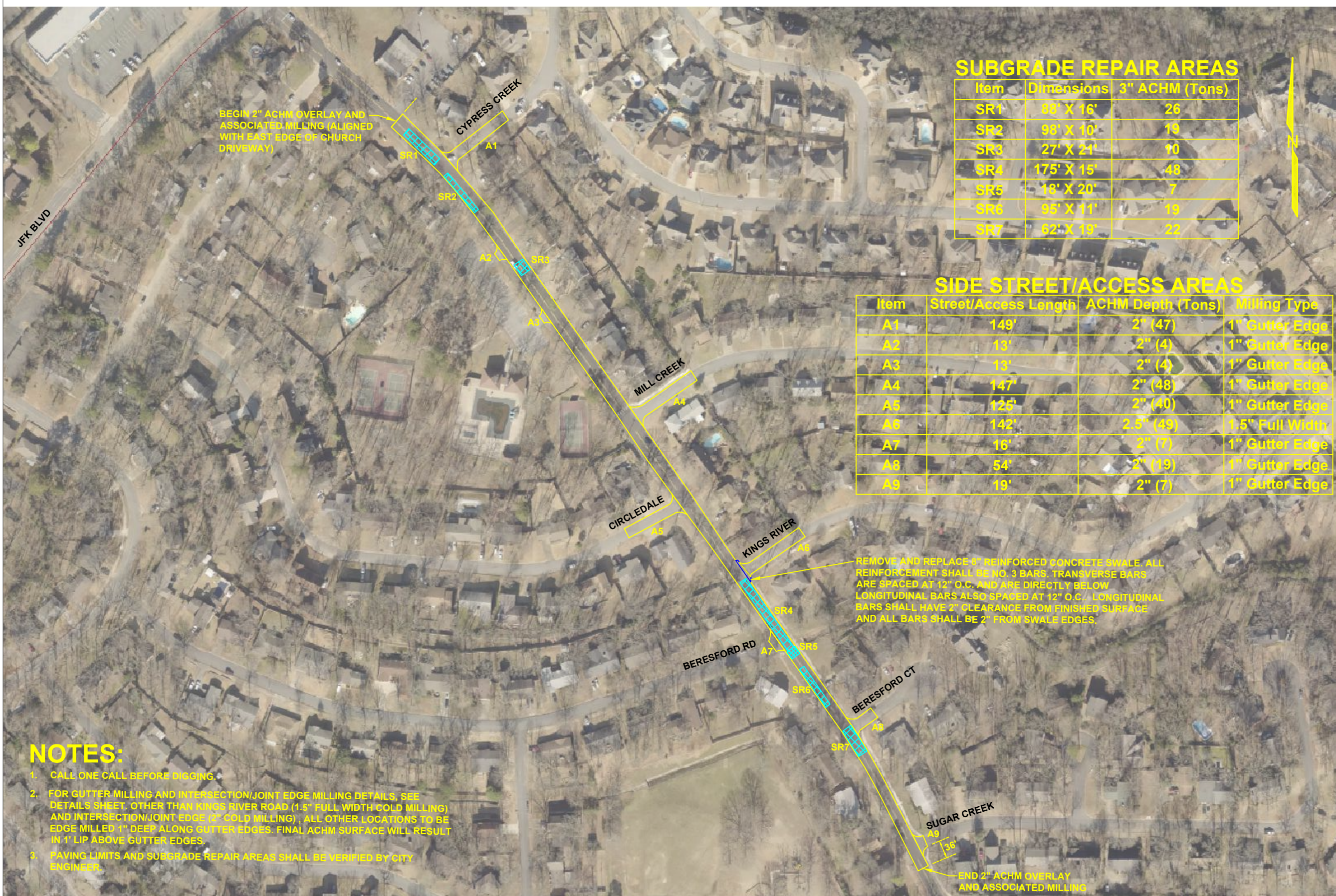
500 WEST 13TH STREET

RANDOLPH ROAD REHABILITATION

COVER SHEET

DATE: 6/2021
DESIGNED BY: MCK
DRAWN BY: MCK
SCALE: NONE

SHEET NUMBER
1



SUBGRADE REPAIR AREAS

Item	Dimensions	3" ACHM (Tons)
SR1	88' X 16'	26
SR2	98' X 10'	19
SR3	27' X 21'	10
SR4	175' X 15'	48
SR5	18' X 20'	7
SR6	95' X 11'	19
SR7	62' X 19'	22

SIDE STREET/ACCESS AREAS

Item	Street/Access Length	ACHM Depth (Tons)	Milling Type
A1	149'	2" (47)	1" Gutter Edge
A2	13'	2" (4)	1" Gutter Edge
A3	13'	2" (4)	1" Gutter Edge
A4	147'	2" (48)	1" Gutter Edge
A5	125'	2" (40)	1" Gutter Edge
A6	142'	2.5" (49)	1.5" Full Width
A7	16'	2" (7)	1" Gutter Edge
A8	54'	2" (19)	1" Gutter Edge
A9	19'	2" (7)	1" Gutter Edge

BEGIN 2" ACHM OVERLAY AND ASSOCIATED MILLING (ALIGNED WITH EAST EDGE OF CHURCH DRIVEWAY)

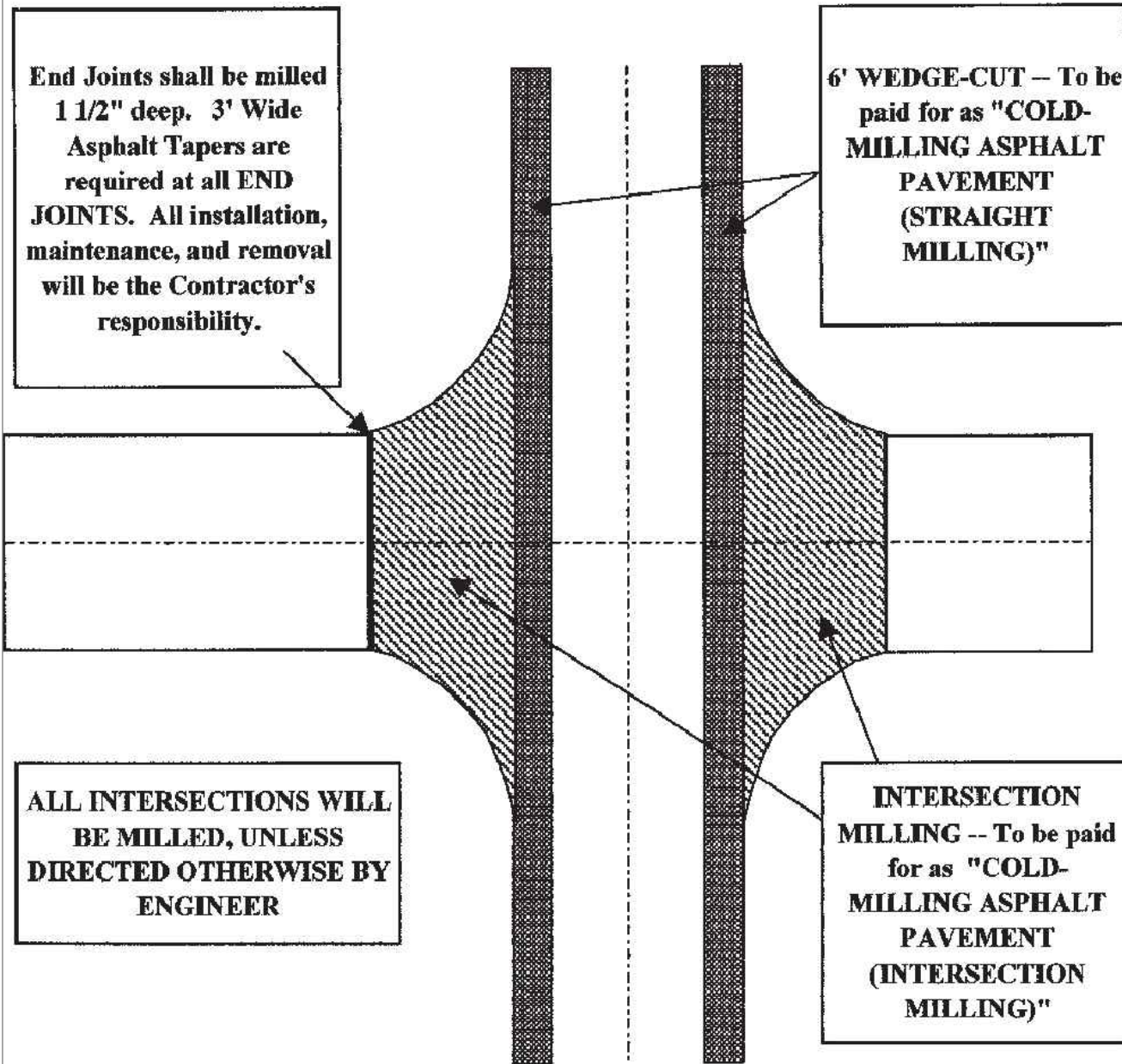
REMOVE AND REPLACE 6" REINFORCED CONCRETE SWALE. ALL REINFORCEMENT SHALL BE NO. 3 BARS. TRANSVERSE BARS ARE SPACED AT 12" O.C. AND ARE DIRECTLY BELOW LONGITUDINAL BARS ALSO SPACED AT 12" O.C. LONGITUDINAL BARS SHALL HAVE 2" CLEARANCE FROM FINISHED SURFACE AND ALL BARS SHALL BE 2" FROM SWALE EDGES.

END 2" ACHM OVERLAY AND ASSOCIATED MILLING

NOTES:

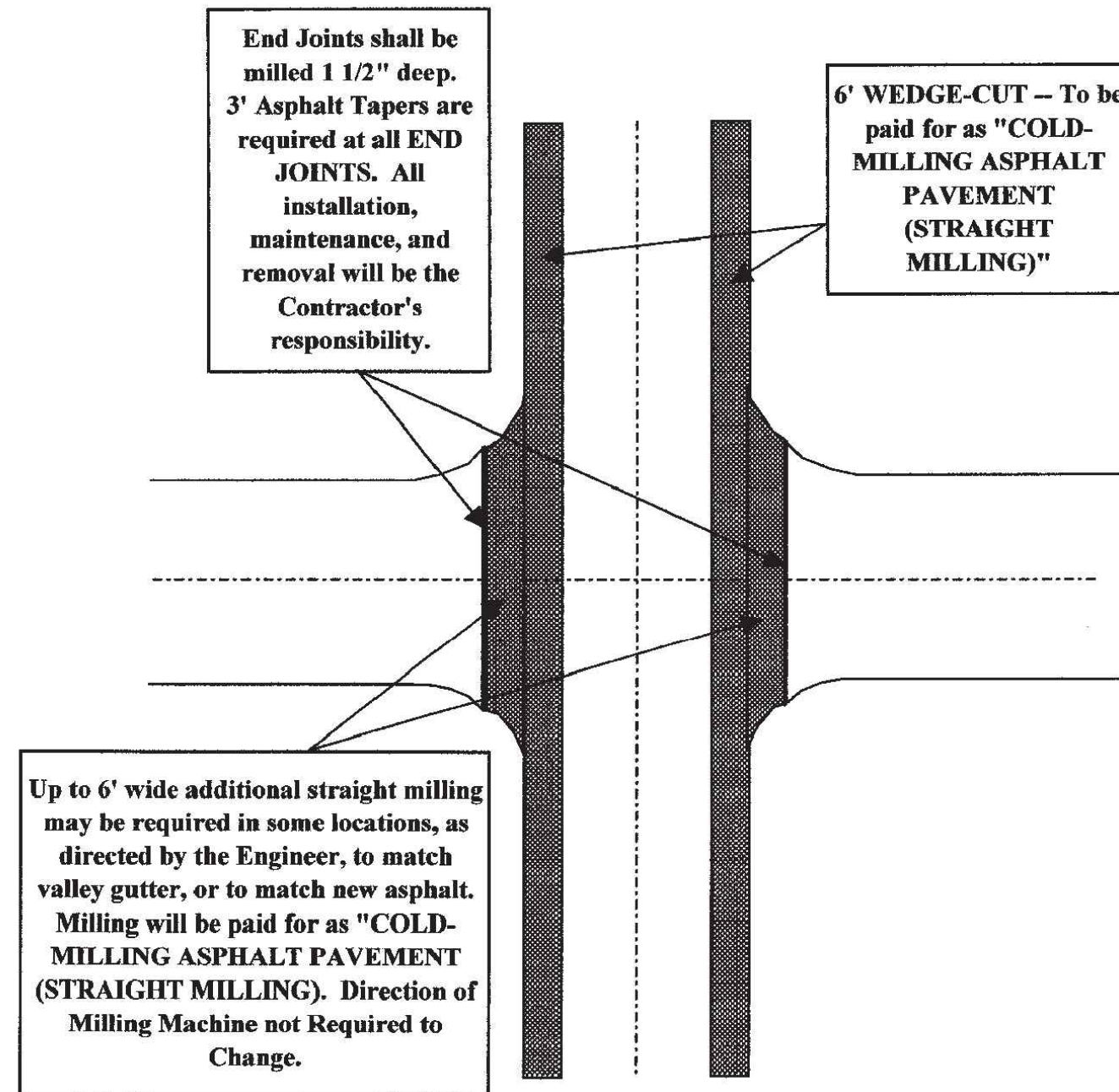
1. CALL ONE CALL BEFORE DIGGING.
2. FOR GUTTER MILLING AND INTERSECTION/Joint EDGE MILLING DETAILS, SEE DETAILS SHEET. OTHER THAN KINGS RIVER ROAD (1.5" FULL WIDTH COLD MILLING) AND INTERSECTION/Joint EDGE (2" COLD MILLING), ALL OTHER LOCATIONS TO BE EDGE MILLED 1" DEEP ALONG GUTTER EDGES. FINAL ACHM SURFACE WILL RESULT IN 1" LIP ABOVE GUTTER EDGES.
3. PAVING LIMITS AND SUBGRADE REPAIR AREAS SHALL BE VERIFIED BY CITY ENGINEER.

INTERSECTION MILLING DETAIL #1



MILLING LIMITS TO BE DESIGNATED BY ENGINEER
See "Supplemental Specifications" For Cold-Milling Asphalt Pavement

INTERSECTION MILLING DETAIL #2

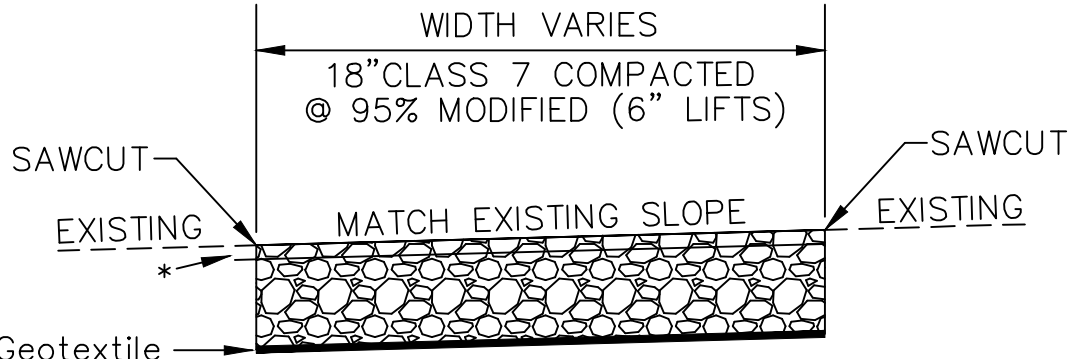
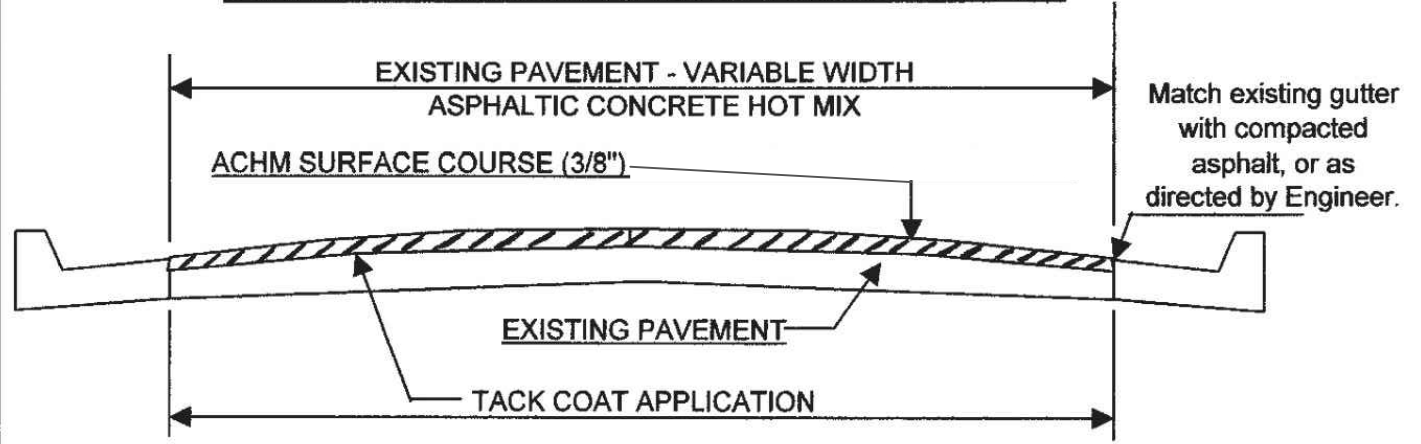


MILLING LIMITS TO BE DESIGNATED BY ENGINEER
See "Supplemental Specifications" for Cold-Milling Asphalt Pavement.



RESURFACING DETAILS

TYPICAL RESURFACING WITH MILLING AT GUTTERS



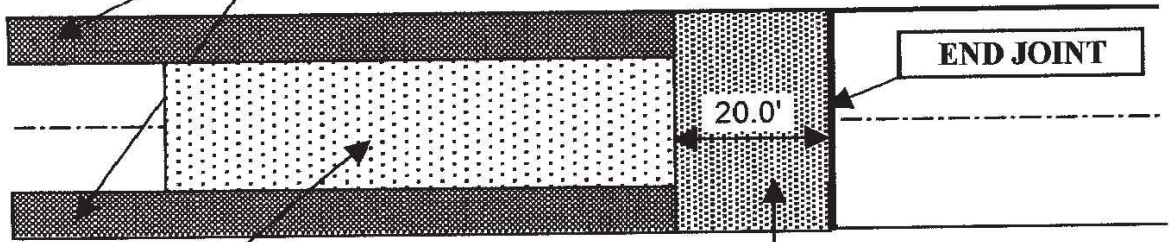
Mirafi HP270 Geotextile
Or Approved Equal

SUBGRADE REPAIR DETAIL

N.T.S.

* AT TIME OF PAVING, TOP THREE INCHES OF CLASS 7 IN SUBGRADE REPAIR AREAS SHALL BE REMOVED AND REPLACED WITH 3" ACHM BEFORE LIMITS OF ENTIRE STREET RECEIVES 2" ACHM OVERLAY.

6' WIDE WEDGE-CUT -- To be paid for as "COLD-MILLING ASPHALT PAVEMENT (STRAIGHT MILLING)"



END JOINT

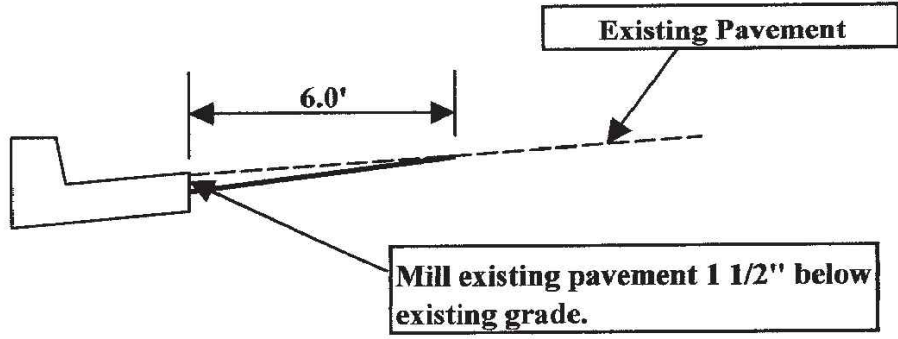
20.0'

Milling to be paid for as "COLD-MILLING ASPHALT PAVEMENT (INTERSECTION / END JOINT)". 3' Wide Asphalt Tapers are required at all END JOINTS. All installation, maintenance, and removal will be the Contractor's responsibility. Tapers may be required at driveways.

Full-Width Milling may be required in some locations as directed by Engineer. Full-width Milling will be paid for as "COLD-MILLING ASPHALT PAVEMENT (STRAIGHT MILLING)".

Milling Limits to be designated by Engineer.

See Supplemental Specification for "COLD MILLING ASPHALT PAVEMENT".



Existing Pavement

6.0'

Mill existing pavement 1 1/2" below existing grade.

MILLING DETAIL -- (WEDGE CUT)