

CITY OF NORTH LITTLE ROCK FUNLAND DRIVE DRAINAGE PIPE REPLACEMENT - PHASE II NORTH LITTLE ROCK, ARKANSAS



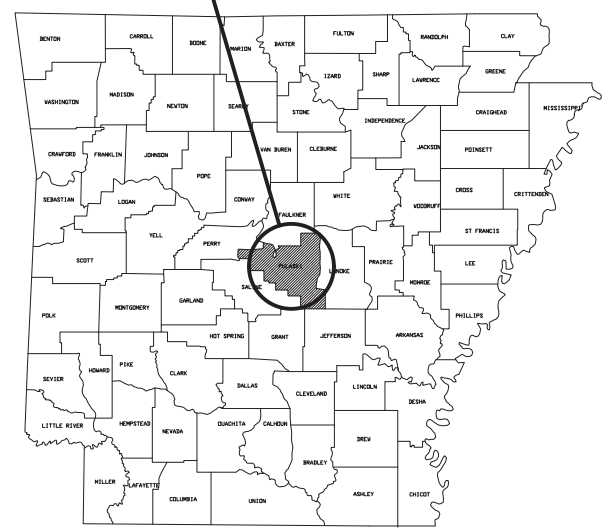
CITY OF NORTH LITTLE ROCK
Parks & Recreation Department
NORTH LITTLE ROCK, AR 72114
2700 WILLOW STREET

FUNLAND DRIVE
DRAINAGE PIPE REPLACEMENT
PHASE II

COVER SHEET
AND
INDEX OF SHEETS

Sheet Number
1

PROJECT AREA



**ARKANSAS
STATE MAP**

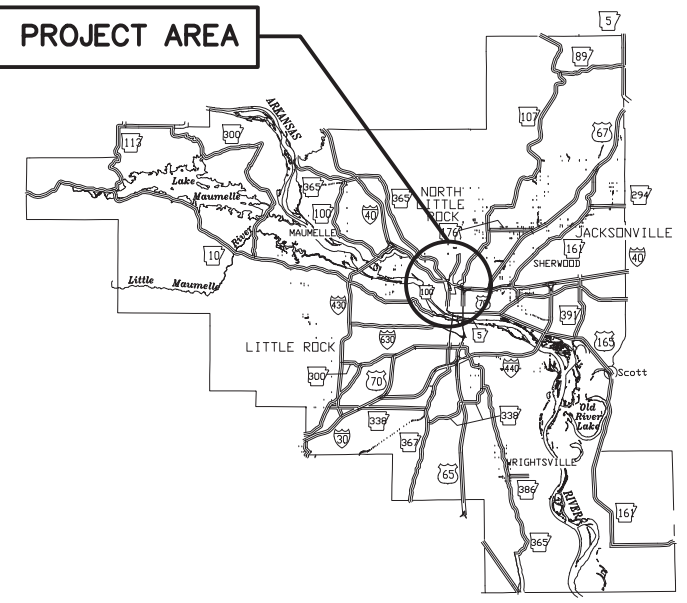
PROJECT SITE



FUNLAND DRIVE

LOCATION MAP

PROJECT AREA



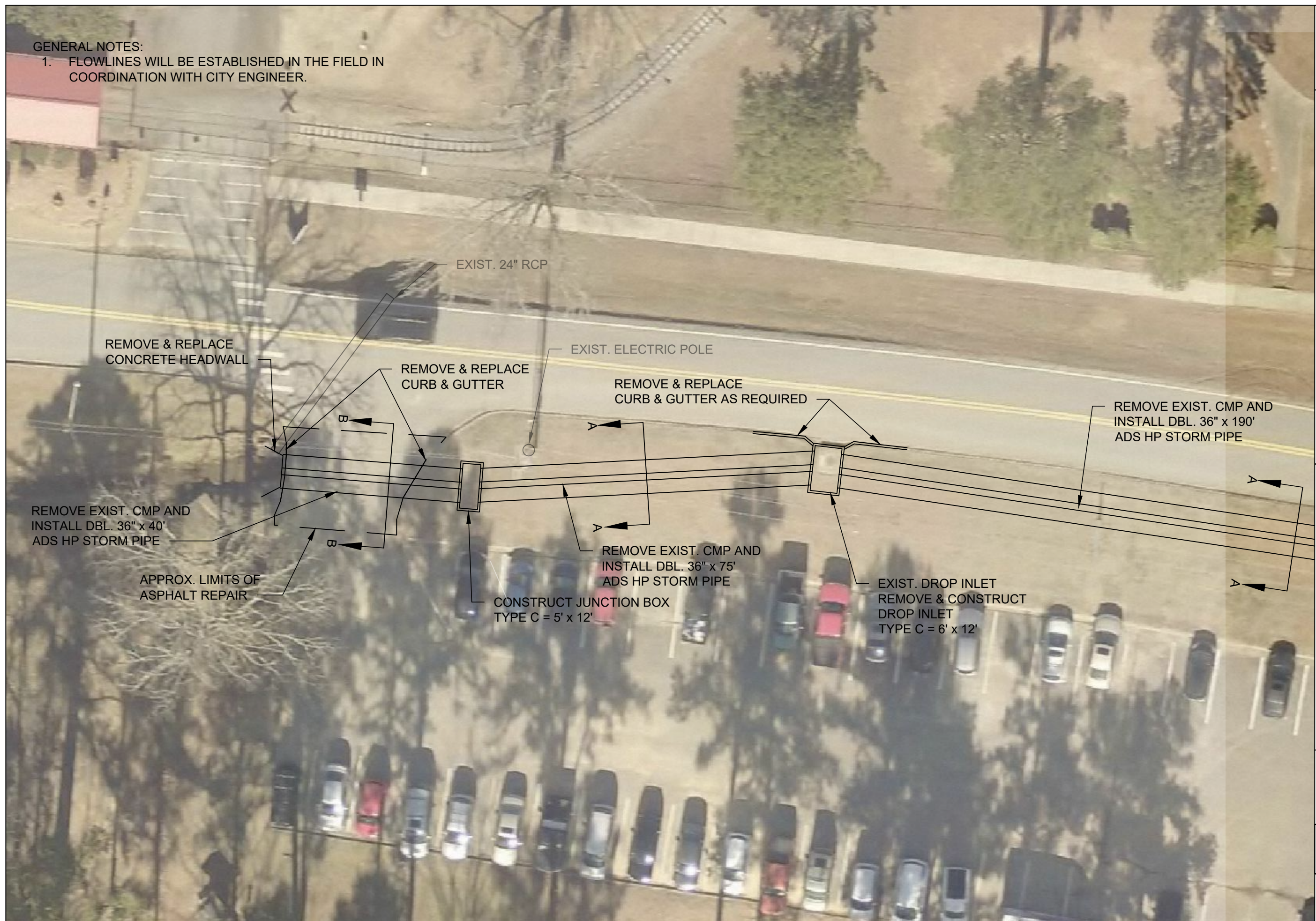
**PULASKI
COUNTY MAP**

INDEX OF SHEETS	
SHEET	TITLE
1	COVER SHEET AND INDEX OF SHEETS
2	SITE PLAN DETAILS I
3	SITE PLAN DETAILS II
4	GENERAL NOTES & DETAILS
5	DRAINAGE DTLs. - 6'X12' TYPE C DROP INLET
6	DRAINAGE DTLs. - 5'X12' TYPE C JUNCTION BOX
7	DRAINAGE DTLs. - CONC. HEADWALL

**City of North Little Rock
February 2021**

GENERAL NOTES:

- 1. FLOWLINES WILL BE ESTABLISHED IN THE FIELD IN COORDINATION WITH CITY ENGINEER.



CITY OF NORTH LITTLE ROCK
Engineering Department

500 WEST 13TH STREET
NORTH LITTLE ROCK, AR 72114

FUNLAND DRIVE
DRAINAGE PIPE REPLACEMENT
PHASE II

SITE
PLAN
DETAILS I

DATE: 02/2021
DESIGNED BY: DMC
DRAWN BY: DMC
SCALE: 1" = 20'

SHEET NUMBER

2

GENERAL NOTES:

- 1. FLOWLINES WILL BE ESTABLISHED IN THE FIELD IN COORDINATION WITH CITY ENGINEER.



CITY OF NORTH LITTLE ROCK
Engineering Department

500 WEST 13TH STREET
NORTH LITTLE ROCK, AR 72114

FUNLAND DRIVE
DRAINAGE PIPE REPLACEMENT
PHASE II

SITE
PLAN
DETAILS II

DATE: 02/2021
DESIGNED BY: DMC
DRAWN BY: DMC
SCALE: 1" = 20'

SHEET NUMBER

3

GENERAL NOTES:

1. CONTRACTOR SHALL COORDINATE SCHEDULE AND CLOSURE TIMES WITH CITY ENGINEER, TRAFFIC SERVICES, AND PARKS DEPARTMENT PROPR TO CONSTRUCTION.
2. CONTRACTOR IS RESPONSIBLE FOR LOCATING EXISTING UTILITIES WITHIN IMPACTED AREAS THROUGH ARKANSAS ONE-CALL.
3. FLOWLINES WILL BE ESTABLISHED IN THE FIELD IN COORDINATION WITH CITY ENGINEER.



CITY OF NORTH LITTLE ROCK
Engineering Department
NORTH LITTLE ROCK, AR 72114

FUNLAND DRIVE
DRAINAGE PIPE REPLACEMENT

GENERAL NOTES & DETAILS

DATE: 2/2021
DESIGNED BY: DMC
DRAWN BY: DMC
SCALE: NTS

SHEET NUMBER
4

HP STORM TRENCH INSTALLATION DETAIL

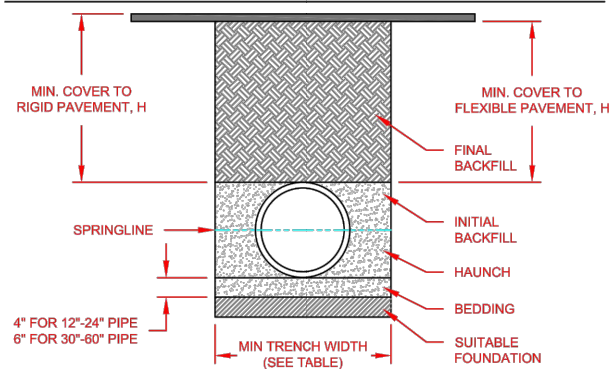


TABLE 1, RECOMMENDED MINIMUM TRENCH WIDTHS

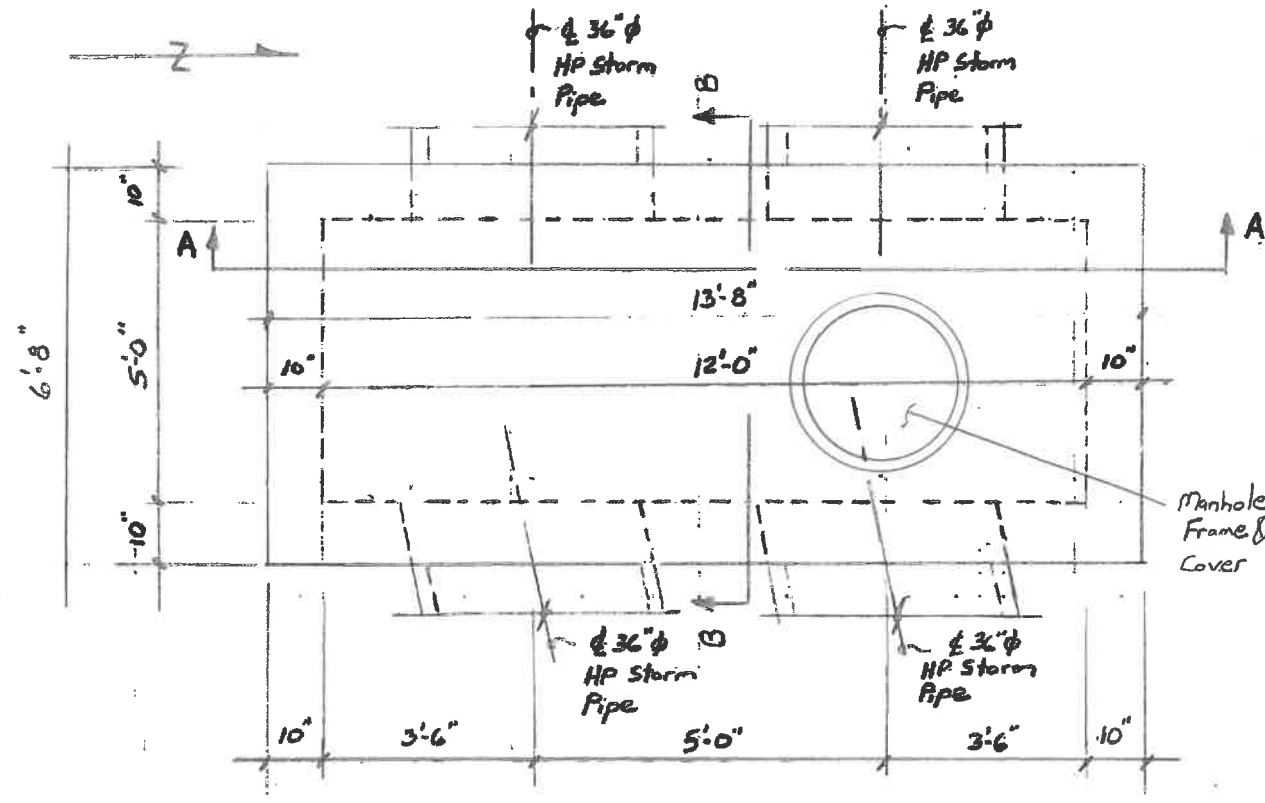
PIPE DIAM.	MIN. TRENCH WIDTH
12" (300mm)	30"
15" (375mm)	34"
18" (450mm)	39"
24" (600mm)	48"
30" (750mm)	56"
36" (900mm)	64"
42" (1050mm)	72"
48" (1200mm)	80"
60" (1500mm)	96"

TABLE 2, MINIMUM RECOMMENDED COVER BASED ON VEHICLE LOADING CONDITIONS

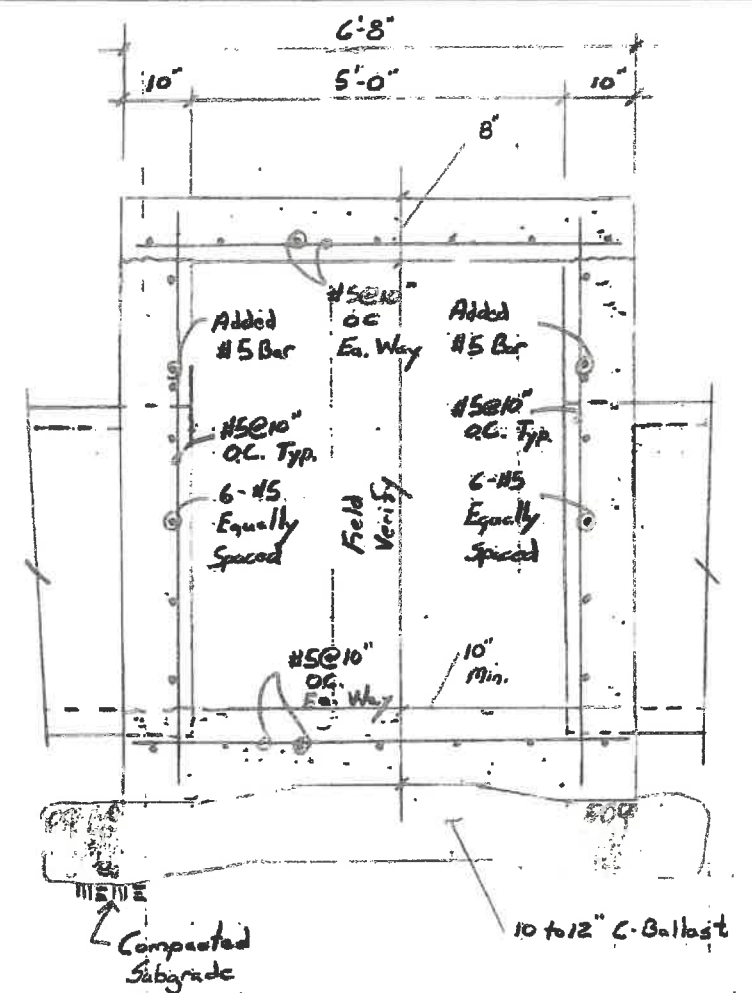
PIPE DIAM.	SURFACE LIVE LOADING CONDITION	
	H-25	HEAVY CONSTRUCTION (75T AXLE LOAD) *
12" - 48" (300mm - 1200mm)	12" (305mm)	48" (1219mm)
60" (1500mm)	24" (610mm)	60" (1524mm)

TABLE 3, MAXIMUM COVER FOR ADS HP STORM PIPE, ft

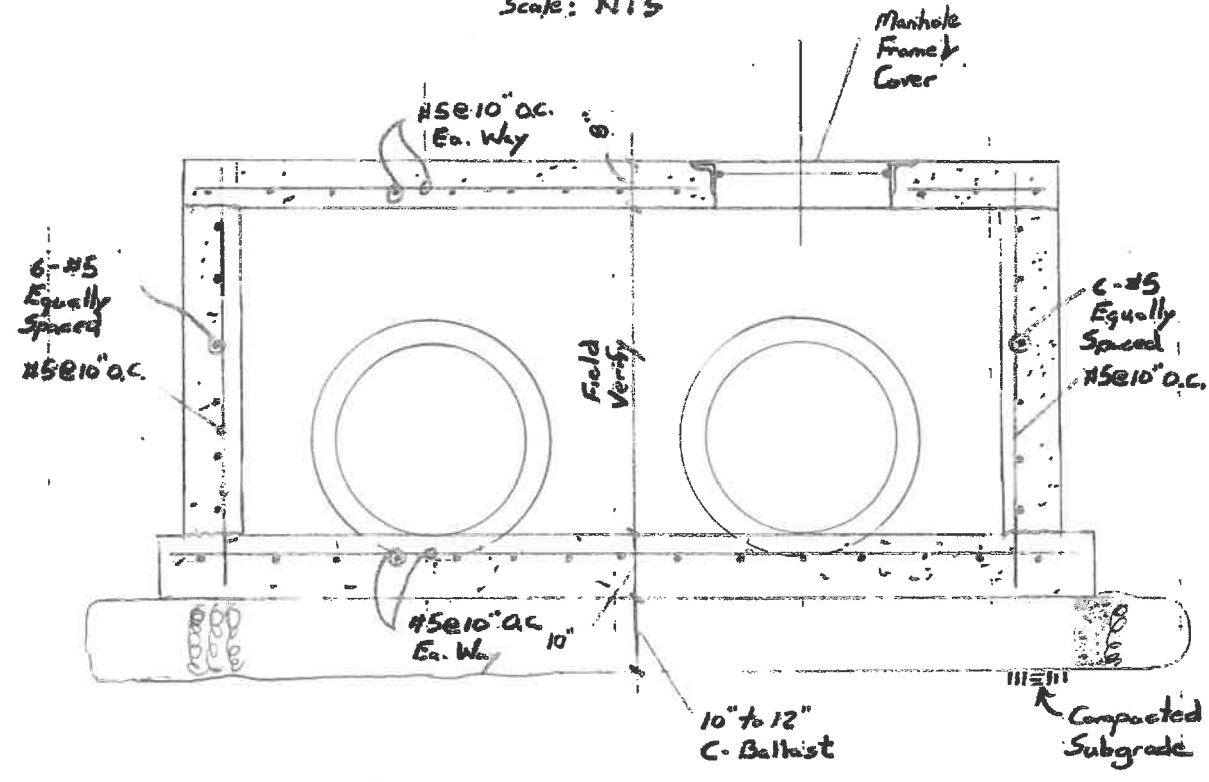
PIPE DIA	CLASS I							CLASS II							CLASS III							CLASS IV																																																																																																																																																																																																																																																																																																																																																																																																																																																																																																																																																																																																																																																																																																																																																																																																																																																																																																																																																																																																																																																																																																																																																																																																																																																																																																																																																																																																																					
	COMPACTED	95%	90%	85%	95%	90%	95%	95%	90%	85%	95%	90%	85%	95%	90%	85%	95%	90%	85%	95%	90%	85%																																																																																																																																																																																																																																																																																																																																																																																																																																																																																																																																																																																																																																																																																																																																																																																																																																																																																																																																																																																																																																																																																																																																																																																																																																																																																																																																																																																																																					
12"	41	28	21	16	20	16	16	42	29	21	16	21	16	16	44	30	21	16	22	17	16	46	31	22	17	17	48	32	23	18	18	49	33	24	19	19	50	34	25	20	20	51	35	26	21	21	52	36	27	22	22	53	37	28	23	23	54	38	29	24	24	55	39	30	25	25	56	40	31	26	26	57	41	32	27	27	58	42	33	28	28	59	43	34	29	29	60	44	35	30	30	61	45	36	31	31	62	46	37	32	32	63	47	38	33	33	64	48	39	34	34	65	49	40	35	35	66	50	41	36	36	67	51	42	37	37	68	52	43	38	38	69	53	44	39	39	70	54	45	40	40	71	55	46	41	41	72	56	47	42	42	73	57	48	43	43	74	58	49	44	44	75	59	50	45	45	76	60	51	46	46	77	61	52	47	47	78	62	53	48	48	79	63	54	49	49	80	64	55	50	50	81	65	56	51	51	82	66	57	52	52	83	67	58	53	53	84	68	59	54	54	85	69	60	55	55	86	70	61	56	56	87	71	62	57	57	88	72	63	58	58	89	73	64	59	59	90	74	65	60	60	91	75	66	61	61	92	76	67	62	62	93	77	68	63	63	94	78	69	64	64	95	79	70	65	65	96	80	71	66	66	97	81	72	67	67	98	82	73	68	68	99	83	74	69	69	100	84	75	70	70	101	85	76	71	71	102	86	77	72	72	103	87	78	73	73	104	88	79	74	74	105	89	80	75	75	106	90	81	76	76	107	91	82	77	77	108	92	83	78	78	109	93	84	79	79	110	94	85	80	80	111	95	86	81	81	112	96	87	82	82	113	97	88	83	83	114	98	89	84	84	115	99	90	85	85	116	100	91	86	86	117	101	92	87	87	118	102	93	88	88	119	103	94	89	89	120	104	95	90	90	121	105	96	91	91	122	106	97	92	92	123	107	98	93	93	124	108	99	94	94	125	109	100	95	95	126	110	101	96	96	127	111	102	97	97	128	112	103	98	98	129	113	104	99	99	130	114	105	100	100	131	115	106	101	101	132	116	107	102	102	133	117	108	103	103	134	118	109	104	104	135	119	110	105	105	136	120	111	106	106	137	121	112	107	107	138	122	113	108	108	139	123	114	109	109	140	124	115	110	110	141	125	116	111	111	142	126	117	112	112	143	127	118	113	113	144	128	119	114	114	145	129	120	115	115	146	130	121	116	116	147	131	122	117	117	148	132	123	118	118	149	133	124	119	119	150	134	125	120	120	151	135	126	121	121	152	136	127	122	122	153	137	128	123	123	154	138	129	124	124	155	139	130	125	125	156	140	131	126	126	157	141	132	127	127	158	142	133	128	128	159	143	134	129	129	160	144	135	130	130	161	145	136	131	131	162	146	137	132	132	163	147	138	133	133	164	148	139	134	134	165	149	140	135	135	166	150	141	136	136	167	151	142	137	137	168	152	143	138	138	169	153	144	139	139	170	154	145	140	140	171	155	146	141	141	172	156	147	142	142	173	157	148	143	143	174	158	149	144	144	175	159	150	145	145	176	160	151	146	146	177	161	152	147	147	178	162	153	148	148	179	163	154	149	149	180	164	155	150	150	181	165	156	151	151	182	166	157	152	152	183	167	158	153	153	184	168	159	154	154	185	169	160	155	155	186	170	161	156	156	187	171	162	157	157	188	172	163	158	158	189	173	164	159	159	190	174	165	160	160	191	175	166	161	161	192	176	167	162	162	193	177	168	163	163	194	178	169	164	164	195	179	170	165	165	196	180	171	166	166	197	181	172	167	167	198	182	173	168	168	199	183	174	169	169	200	184	175	170	170	201	185	176	171	171	202	186	177	172	172	203	187	178	173	173	204	188	179	174	174	205	189	180	175	175	206	190	181	176	176	207	191	182	177	177	208	192	183	178	178	209	193	184	179	179	210	194	185	180	180	211	195	186	181	181	212	196	187	182	182	213	197	188	183	183	214	198	189	184	184	215	199	190	185	185	216	200	191	186	186	217	201	192	187	187	218	202	193	188	188	219	203	194	189	189	220	204	195	190	190	221	205	196	191	191	222	206	197	192	192	223	207	198	193	193	224	208	199	194	194	225	209	200	195	195	226	210	201	196	196	227	211	202	197	197	228	212	203	198	198	229	213	204	199	199	230	214	205	200	200	231	215	206	201	201	232	216	207	202	202	233	217	208	203	203	234	218	209	204	204	235	219	210	205	205	236	220	211	206	206	237	221	212	207	207	238	222	213	208	208	239	223	214	209	209	240	224	215	210	210	241	225	216	211	211	242	226	217	212	212	243	227	218	213	213	244	228	219	214	214	245	229	220	215	215	246	230	221	216	216	247	231	222	217	217	248	232	223	218	218	249	233	224	219	219	250	234	225	220	220	251	235	226	221	221	252	236	227	222	222	253	237	228	223	223	254	238	229	224	224	255	239	230	225	225	256	240	231	226	226	257	241	232	227	227	258	242	233	228	228	259	243	234	229	229	260	244	235	230	230	261	245	236	231	231	262	246	237	232	232	263	247	238	233	233	264	248	239	234	234	265	249	240	235	235	266	250	241	236	236	267	251	242	237	237	268	252	243	238	238	269	253	244	239	239	270	254	245	240	240	271	255	246	241	241	272	256	247	242	242	273	257	248	243	243	274	258	249	244	244	275	259	250	245	245	276	260	251	246	246	277	261	252	247	247	278	262	253	248	248	279	263	254	249	249	280	264	255	250	250	281	265	256	251	251	282	266	257	252	252	283	267	258	253	253	284	268	259	254	254	285	269	260	255	255	286	270	261	256	256	287	271	262	257	257	288	272	263	258	258	289	273	264	259	259	290	274	265	260	260	291	275	266	261	261	292	276	267	262	262	293	277	268	263	263	294	278	269	264	264	295	279	270	265	265	296	280	271	266	266	297	281	272	267	267	298	282	273	268	268	299	283	274	269	269	300	284	275	270	270	301	285	276	271	271	302	286	277	272	272	303	287	278	273	273	304	288	279	274	274	305	289	280	275	275	306	290	281	276	276	307	291	282	277	277	308	292	283	278	278	309	293	284	279	279	310	294	285	280	280	311	295	286	281	281	312	296	287	282	282	313	297	288	283	283	314	298	289	284	284	315	299	290	285	285	316	300	291	286	286	317	301	292	287	287	318	302	293	288	288	319	303	294	289	289	320



PLAN
Scale: NTS



SECTION B-B
Scale: NTS



SECTION A-A
Scale 3/8"=1'-0"



CITY OF NORTH LITTLE ROCK
Engineering Department
NORTH LITTLE ROCK, AR 72114
500 WEST 13TH STREET

FUNLAND DRIVE
DRAINAGE PIPE REPLACEMENT
PHASE II

DRAINAGE
DETAILS
4x12
Type C
Junction Box

DATE: 2/2021
DESIGNED BY: DCW
DRAWN BY: DCW
SCALE: AS SHOWN

SHEET NUMBER
6



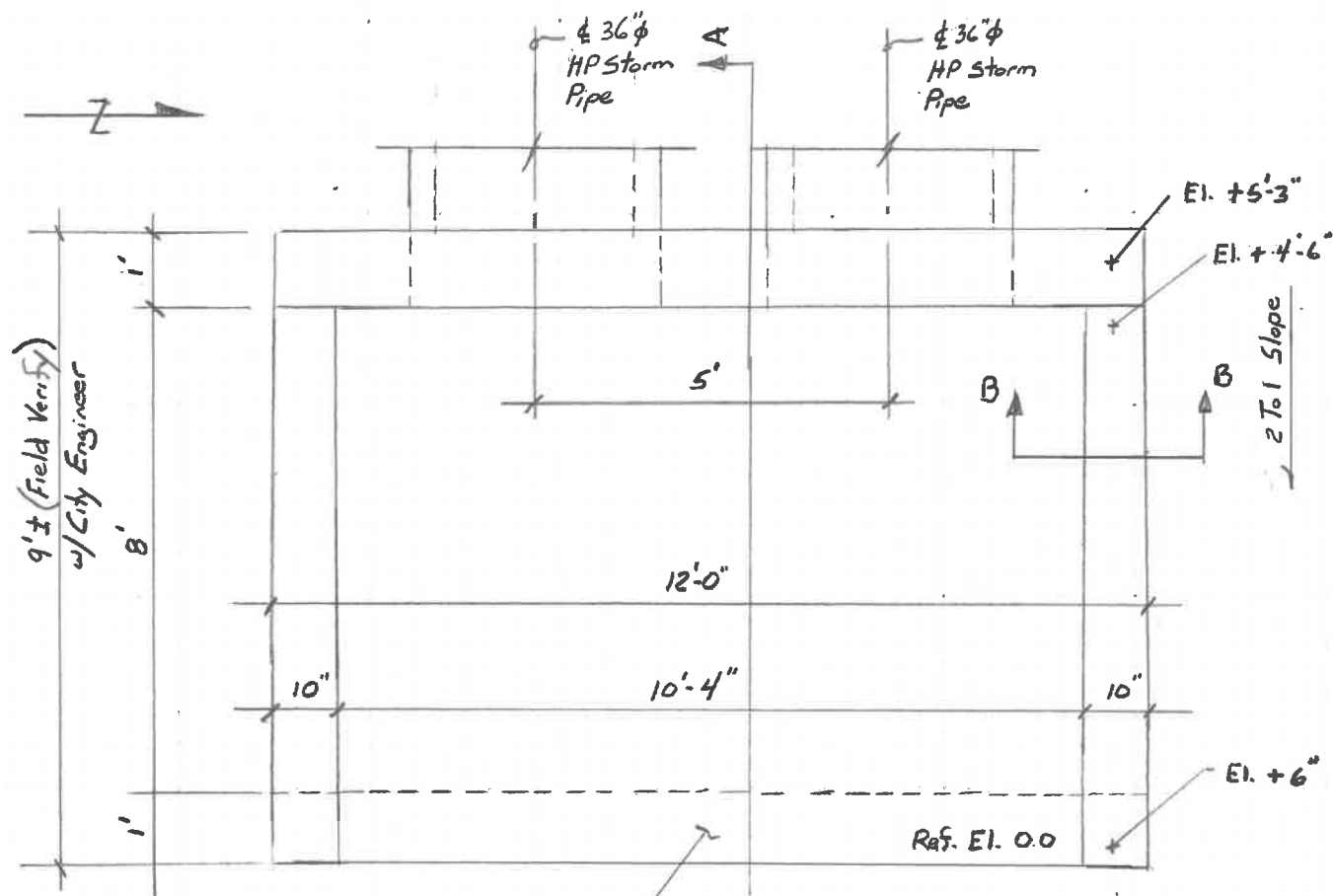
CITY OF NORTH LITTLE ROCK
Engineering Department
500 WEST 13TH STREET
NORTH LITTLE ROCK, AR 72114

FUNLAND DRIVE
DRAINAGE PIPE REPLACEMENT
PHASE II

DRAINAGE
DETAILS
Concrete
Headwall

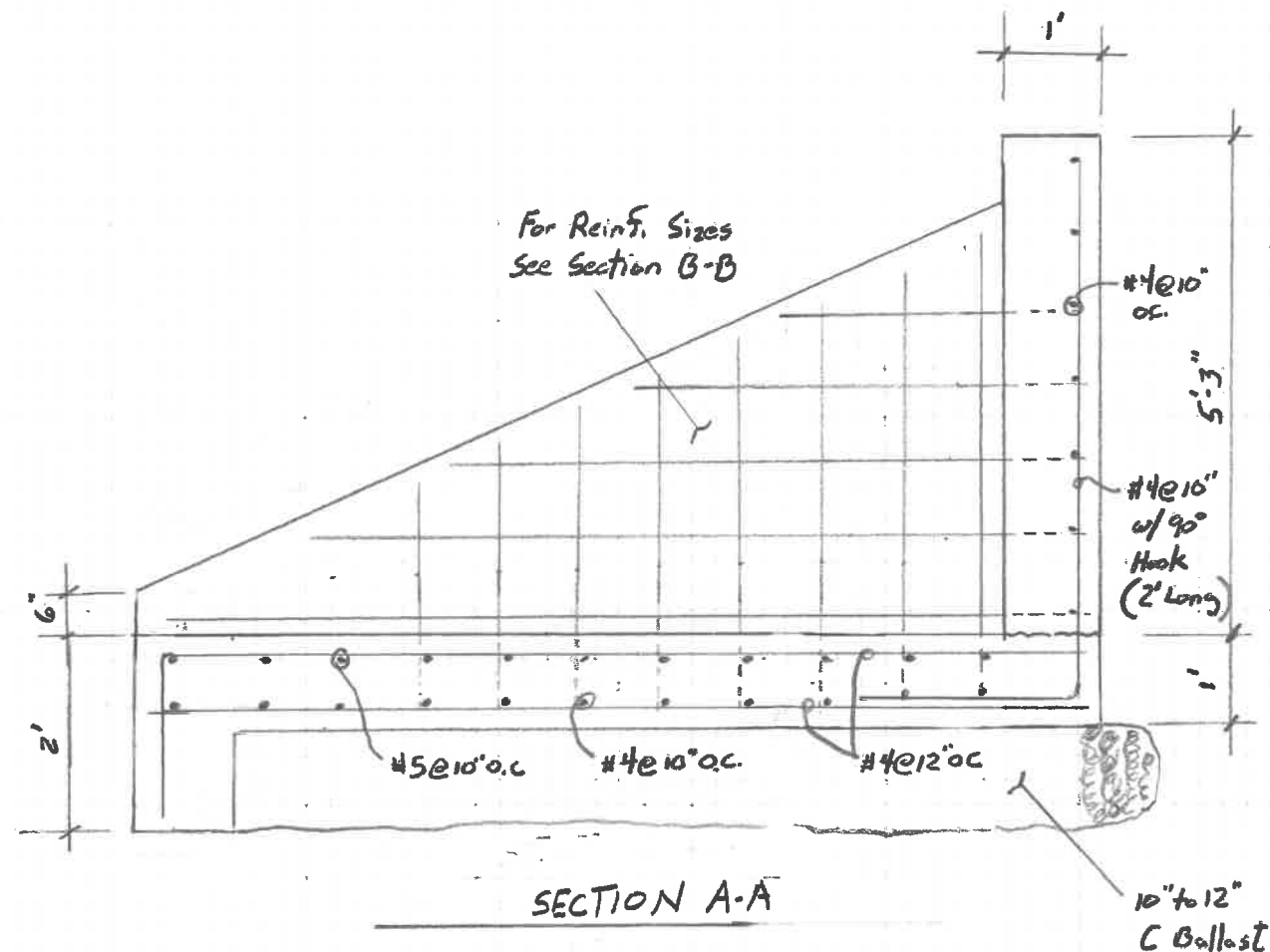
DATE: 2/2021
DESIGNED BY: DCW
DRAWN BY: DCW
SCALE: AS SHOWN

SHEET NUMBER
7

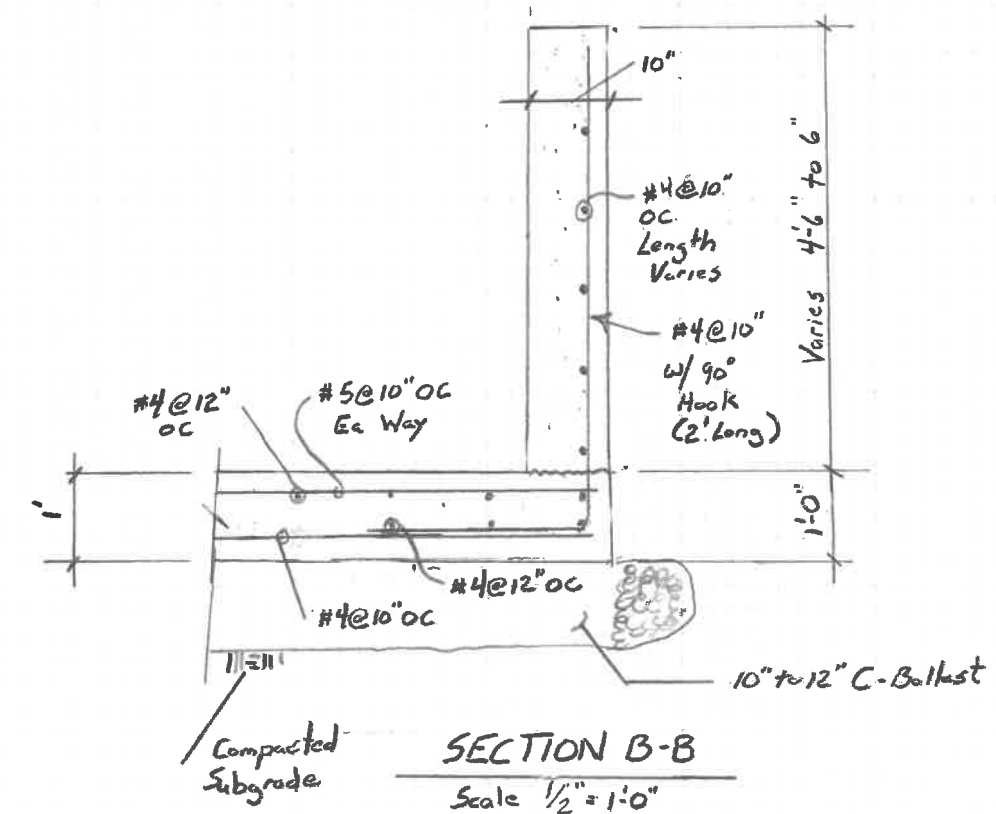


1' x 2' Deep
Turndown

PLAN
Scale $\frac{3}{8}'' = 1'-0''$



SECTION A-A



SECTION B-B
Scale $\frac{1}{2}'' = 1'-0''$