

CITY OF NORTH LITTLE ROCK, ARKANSAS
Finance Department
Commerce Division
Amy Smith, Purchasing Manger
Shelia Harper, Purchasing Agent



P.O. BOX 5757
NORTH LITTLE ROCK, AR 72119
501-975-8881 Phone
501-975-8808 Fax
asmith@nlr.ar.gov

INVITATION TO BID

Bid Number : _____ 25-3906 _____ Date Issued: _____ December 19, 2025
Date & Time Bid Opening: _____ Friday, January 9, 2026, at 10:00 a.m.

2026 STREET & SECURITY LIGHTING MATERIALS FOR THE NORTH LITTLE ROCK ELECTRIC DEPARTMENT

Specifications and Pricing Sheet are attached.

Any questions regarding the bid should be directed to

- Todd Stripling at 501-992-4052

If you are obtaining this bid from our website, please be reminded that addendums may occur. It is therefore advisable that you review our listings for attachments including any changes to the bid.

The City of North Little Rock encourages participation of small, minority, and woman own business enterprises in the procurement of goods, services, professional services, and construction, either as a general contractor or sub-contractor. It is further requested that whenever possible, majority contractors who require sub-contractors, seek qualified small, minority, and woman businesses to partner with them

NOTE: FAILURE TO FILL OUT AND SIGN THE INVITATION TO BID SHEET WILL RESULT IN REJECTION OF THE BID.

EXECUTION OF BID

Upon signing this Bid, the bidder certifies that they have read and agree to the requirements set forth in this bid, including specifications, conditions and pertinent information regarding the articles being bid on, and agree to furnish these articles at the prices stated.

NAME OF FIRM: _____

PHONE NUMBER: _____ TAX ID NO. _____

BUSINESS ADDRESS: _____

DATE: _____

SIGNATURE OF AUTHORIZED PERSON & TITLE _____

UNSIGNED BIDS WILL BE REJECTED



NORTH LITTLE ROCK ELECTRIC DEPARTMENT

2026 STREET & SECURITY LIGHTING MATERIAL BID LIST SUMMARY

Notations for 2026 Invitation to Bid

Street & Security Lighting Material Bid List - Vendor Copy

Street & Security Lighting Material Bid List – Specifications – For Vendor Reference



NORTH LITTLE ROCK ELECTRIC DEPARTMENT

STREET LIGHT & SECURITY LIGHTING MATERIALS FOR 2026

SPECIFICATIONS ARE ATTACHED.

Any questions regarding the specifications and/or requirements should be directed to **Greg Woodward at 501-992-4073, or Todd Stripling at 501-992-4052.**

- Quantities shown are estimate based on an average yearly usage; these may vary depending on demand.
- Vendor is required to keep 25% in stock of the estimated quantity with a maximum of (10) days shipping/delivery availability.
- Vendor must identify specific items which require more than 10 days delivery time.
- Vendor is required to have Central Arkansas Warehouse locations for essential items.
- Vendor should provide all contact information for ordering purposes.
- Deliveries for large reels of wire must be made on open bed trucks to prevent damage.
- Vendor must note "N" means no substitutions where specified; "EM" means exact math or equivalent to.

NOTE: FAILURE TO FILL OUT AND SIGN THE INVITATION TO BID COVER SHEET WILL RESULT IN REJECTION OF THE BID.



NORTH LITTLE ROCK ELECTRIC DEPARTMENT

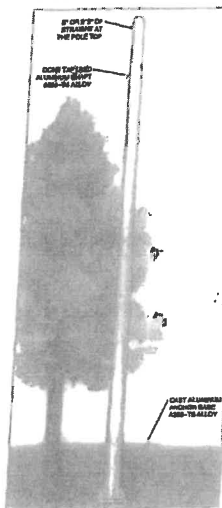
2026 STREET & SECURITY LIGHTING MATERIALS LIST

VENDOR PACKET

ITEM NO	Description	MFG	MFG NO	SUB	EST AVG QTY	UOM	UNIT PRICE	COMMENTS/NOTATIONS
XAT00002	ARM, MAST 2" x 29" (FLOOD LIGHT BRACKET)		AMI-462		100	EACH		
XAT00008S	ARM, MAST 2" x 8'				75	EACH		
XFLOAELED	FLOOD LIGHT, AEL-LED	AMERICAN ELECTRIC						
XLA100MH	LAMP, 1000/U MH		ACROLED P50 MAOLT 66 YK BZ MP NL P7 6643	N	150	EACH		
XLA100HPS	LAMP, 100W HPS S-54				60	EACH		
XLA100MH	LAMP, 100/U MH MEDIUM BASE				60	EACH		
XLA150MH	LAMP, 150W MH	SYLVANIA	64468		60	EACH		
XLA27WHLR	LAMP, LED RETRO FIT MH 27W		MS-150-MGL		120	EACH		
XLA36WHLR	LAMP, LED RETRO FIT MH 36W	KEYSTONE	KT-LED27HID-E26-840-D/G2	N	150	EACH		
XLA40MH	LAMP, 400W MH	KEYSTONE	KT-LED36HID-EX39-840-D/G3	N	150	EACH		
XLA54WHLR	LAMP, LED RETRO FIT MH 54W	SYLVANIA	64490		120	EACH		
XLA80WHLR	LAMP, LED RETRO FIT MH 80W	KEYSTONE	KT-LED54HID-EX39-850-D/G3	N	150	EACH		
XLNVALED	ASSEMBLY, 6600 LUMEN NEMA HEAD PACKAGE *	KEYSTONE	KT-LED80HID-EX39-840-D	N	150	EACH		
XLNWHLED	HEAD, 6600 LUMEN LED NEMA NIGHT WATCHER	AMERICAN ELECTRIC	LNH2PKGLU5MVOLTR5NA7	N	50	EACH		
XLU072LED	72W LED LIGHT FIXTURE	AMERICAN ELECTRIC	WLTCMVOLITZTD54KUAMPTBNBRTLPGGL24	N	50	EACH		
XLU108LED	108W LED LIGHT FIXTURE	PHILIPS	JTRCM-72W32LED4K-T-R3M-UNIV-DMG-RCD7-WC10-GY3	N	500	EACH		
XNWREFR	REFRACTOR, ACRYLIC (FOR BA) NIGHT WATCHER	PHILIPS	JTRCM-108W32LED4K-T-REM-UNIV-DMG-RCD7-WC10-GY3	N	100	EACH		
XP000001	POLE ACCESSORIES - BASE, SCREW-IN	AMERICAN ELECTRIC	LNH2REF	N	60	EACH		
XP000002	POLE ACCESSORIES - REPAIR KIT, X-BASE FIELD (HAPCO)	CHANCE	11242NG4VP		12	EACH		
XP000003	POLES ACCESSORIES -BASE, TRANSFORMER	HAPCO	74000		60	EACH		
XP000025	POLE, AL 25' (FOR RESIDENTIAL) SGL ARM	HAPCO	70501		20	EACH		
XP000030	POLE, AL 30' SGL BRK (258")	VALMONT	See attached specifications		60	EACH		
XP000031	POLE, AL 30' DBL BRK (258")	HAPCO	73339-001		90	EACH		
XP000033	HAMILTON POLE	HAPCO	73339-002		30	EACH		
XP000034	GRANDVILLE 3 FIXTURE	HOLOPHANE	HLA 14 S5J 16 PO7 ABG BK RI56A		30	EACH		
XP000LED	PHOTOCONTROL - LED	HOLOPHANE	PART# GVD P50 40K MVOLT MS BK GL3 PR3 AO		30	EACH		
XPEDCTL	CONTROLS, PE DUAL VOLTAGE (105-305V, 50-60HZ)	DTL	DLL127 1.5 J50		2,000	EACH		
XPEPLUG	CAP, SHORTING RIPLEY	SUN TECH	SX124-1.5-STM		1,000	EACH		
XPESOCK	SOCKET, PE CONTROL PRECISION #M2A	RIPLEY	BLACK COVER 6005		500	EACH		
		PRECISION	M2A		100	EACH		
	*PACKAGE INCLUDES LNH2REF ACRYLIC REFRACTOR							



20' TO 28' ROUND TAPERED 4-BOLT ANCHOR BASE POLES



- 20' to 28' mounting height.
- For single or multiple luminaire mounting.
- Luminaires may be mounted on brackets or shall may be drilled to manufacturer's mounting specifications.

SPECIFICATIONS

All aluminum alloys shall comply with metallurgical and mechanical properties set forth in the Aluminum Association Standards.

Alloys: The shell shall be spun tapered from all new seamless 6063 alloy aluminum and shall be heat treated to produce a T6 temper. Each shell shall have a minimum 6' long straight section at the top to accommodate the center hub of the appropriate Valmont flood light bracket or tapered arm. Alternatively, the straight section may be drilled for mounting luminaires. All Valmont shells shall be polished with fine grain aluminum oxide cloth, resulting in a high quality, circumferential satin brushed finish. After finishing each pole shall be fully wrapped with neutral PH bubble/free paper for protection in shipment.

Anchor Base: The anchor base is cast from A356 alloy aluminum. The anchor base casting and shell shall be joined by a continuous circumferential weld at the inside bottom of the anchor base. The completed assembly will be heat treated to T6 temper after all structural welding is completed. A356 alloy aluminum cast covers shall be included with each anchor base unless otherwise specified.

Mounting: All poles include a peripherally reinforced flush covered handhole centered 18" above the bottom of the pole. The opening in the 5' and 6' diameter pole shall measure 3" x 5". The opening in the 7", 8", 9" and 10' diameter pole shall measure 4" x 6". An optional 4" x 8" opening is available for 8' and 10' diameter poles.

Anchor Bolts: Each pole shall include: (4) steel hot dip galvanized anchor bolts each with (2) nuts and (2) flat washers sized to match the anchor bolts.

Special Finishes: Natural anodize, duromate, or painted finishes may be specified as an addition to the satin brushed finish, if required. All aluminum parts and accessories shall receive a finish similar to that specified.

CATALOG LOGIC

KEY AND DIMS	TOP DIAMETER	HEIGHT	WALL THICKNESS	SHAPE OF SHAPE	BASE OR MOUNTING	ANCHOR BOLTS	FINISHES	OPTIONS		
1100 = 20' 2388 = 22' 3488 = 24' 5700 = 28'	30 = 3" 40 = 4" 45 = 4 1/2" 60 = 6"	20' to 28'	0.125" x 63 0.125" x 63 0.125" x 63 0.125" x 63	4 = 4' x 2' x 1/2" 5 = 5' x 2' x 1/2" 6 = 6' x 2' x 1/2" 8 = 8' x 2' x 1/2"	4 = 4-bolt Anchor Base	4 = 4-bolt Anchor Base	01 = 100% 02 = 100% 03 = 100% 04 = 100% 05 = 100% 06 = 100% 07 = 100% 08 = 100% 09 = 100% 10 = 100% 11 = 100% 12 = 100% 13 = 100% 14 = 100% 15 = 100% 16 = 100% 17 = 100% 18 = 100% 19 = 100% 20 = 100% 21 = 100% 22 = 100% 23 = 100% 24 = 100% 25 = 100% 26 = 100% 27 = 100% 28 = 100% 29 = 100% 30 = 100% 31 = 100% 32 = 100% 33 = 100% 34 = 100% 35 = 100% 36 = 100% 37 = 100% 38 = 100% 39 = 100% 40 = 100% 41 = 100% 42 = 100% 43 = 100% 44 = 100% 45 = 100% 46 = 100% 47 = 100% 48 = 100% 49 = 100% 50 = 100% 51 = 100% 52 = 100% 53 = 100% 54 = 100% 55 = 100% 56 = 100% 57 = 100% 58 = 100% 59 = 100% 60 = 100% 61 = 100% 62 = 100% 63 = 100% 64 = 100% 65 = 100% 66 = 100% 67 = 100% 68 = 100% 69 = 100% 70 = 100% 71 = 100% 72 = 100% 73 = 100% 74 = 100% 75 = 100% 76 = 100% 77 = 100% 78 = 100% 79 = 100% 80 = 100% 81 = 100% 82 = 100% 83 = 100% 84 = 100% 85 = 100% 86 = 100% 87 = 100% 88 = 100% 89 = 100% 90 = 100% 91 = 100% 92 = 100% 93 = 100% 94 = 100% 95 = 100% 96 = 100% 97 = 100% 98 = 100% 99 = 100% 100 = 100%	01 = 100% 02 = 100% 03 = 100% 04 = 100% 05 = 100% 06 = 100% 07 = 100% 08 = 100% 09 = 100% 10 = 100% 11 = 100% 12 = 100% 13 = 100% 14 = 100% 15 = 100% 16 = 100% 17 = 100% 18 = 100% 19 = 100% 20 = 100% 21 = 100% 22 = 100% 23 = 100% 24 = 100% 25 = 100% 26 = 100% 27 = 100% 28 = 100% 29 = 100% 30 = 100% 31 = 100% 32 = 100% 33 = 100% 34 = 100% 35 = 100% 36 = 100% 37 = 100% 38 = 100% 39 = 100% 40 = 100% 41 = 100% 42 = 100% 43 = 100% 44 = 100% 45 = 100% 46 = 100% 47 = 100% 48 = 100% 49 = 100% 50 = 100% 51 = 100% 52 = 100% 53 = 100% 54 = 100% 55 = 100% 56 = 100% 57 = 100% 58 = 100% 59 = 100% 60 = 100% 61 = 100% 62 = 100% 63 = 100% 64 = 100% 65 = 100% 66 = 100% 67 = 100% 68 = 100% 69 = 100% 70 = 100% 71 = 100% 72 = 100% 73 = 100% 74 = 100% 75 = 100% 76 = 100% 77 = 100% 78 = 100% 79 = 100% 80 = 100% 81 = 100% 82 = 100% 83 = 100% 84 = 100% 85 = 100% 86 = 100% 87 = 100% 88 = 100% 89 = 100% 90 = 100% 91 = 100% 92 = 100% 93 = 100% 94 = 100% 95 = 100% 96 = 100% 97 = 100% 98 = 100% 99 = 100% 100 = 100%	01 = 100% 02 = 100% 03 = 100% 04 = 100% 05 = 100% 06 = 100% 07 = 100% 08 = 100% 09 = 100% 10 = 100% 11 = 100% 12 = 100% 13 = 100% 14 = 100% 15 = 100% 16 = 100% 17 = 100% 18 = 100% 19 = 100% 20 = 100% 21 = 100% 22 = 100% 23 = 100% 24 = 100% 25 = 100% 26 = 100% 27 = 100% 28 = 100% 29 = 100% 30 = 100% 31 = 100% 32 = 100% 33 = 100% 34 = 100% 35 = 100% 36 = 100% 37 = 100% 38 = 100% 39 = 100% 40 = 100% 41 = 100% 42 = 100% 43 = 100% 44 = 100% 45 = 100% 46 = 100% 47 = 100% 48 = 100% 49 = 100% 50 = 100% 51 = 100% 52 = 100% 53 = 100% 54 = 100% 55 = 100% 56 = 100% 57 = 100% 58 = 100% 59 = 100% 60 = 100% 61 = 100% 62 = 100% 63 = 100% 64 = 100% 65 = 100% 66 = 100% 67 = 100% 68 = 100% 69 = 100% 70 = 100% 71 = 100% 72 = 100% 73 = 100% 74 = 100% 75 = 100% 76 = 100% 77 = 100% 78 = 100% 79 = 100% 80 = 100% 81 = 100% 82 = 100% 83 = 100% 84 = 100% 85 = 100% 86 = 100% 87 = 100% 88 = 100% 89 = 100% 90 = 100% 91 = 100% 92 = 100% 93 = 100% 94 = 100% 95 = 100% 96 = 100% 97 = 100% 98 = 100% 99 = 100% 100 = 100%	01 = 100% 02 = 100% 03 = 100% 04 = 100% 05 = 100% 06 = 100% 07 = 100% 08 = 100% 09 = 100% 10 = 100% 11 = 100% 12 = 100% 13 = 100% 14 = 100% 15 = 100% 16 = 100% 17 = 100% 18 = 100% 19 = 100% 20 = 100% 21 = 100% 22 = 100% 23 = 100% 24 = 100% 25 = 100% 26 = 100% 27 = 100% 28 = 100% 29 = 100% 30 = 100% 31 = 100% 32 = 100% 33 = 100% 34 = 100% 35 = 100% 36 = 100% 37 = 100% 38 = 100% 39 = 100% 40 = 100% 41 = 100% 42 = 100% 43 = 100% 44 = 100% 45 = 100% 46 = 100% 47 = 100% 48 = 100% 49 = 100% 50 = 100% 51 = 100% 52 = 100% 53 = 100% 54 = 100% 55 = 100% 56 = 100% 57 = 100% 58 = 100% 59 = 100% 60 = 100% 61 = 100% 62 = 100% 63 = 100% 64 = 100% 65 = 100% 66 = 100% 67 = 100% 68 = 100% 69 = 100% 70 = 100% 71 = 100% 72 = 100% 73 = 100% 74 = 100% 75 = 100% 76 = 100% 77 = 100% 78 = 100% 79 = 100% 80 = 100% 81 = 100% 82 = 100% 83 = 100% 84 = 100% 85 = 100% 86 = 100% 87 = 100% 88 = 100% 89 = 100% 90 = 100% 91 = 100% 92 = 100% 93 = 100% 94 = 100% 95 = 100% 96 = 100% 97 = 100% 98 = 100% 99 = 100% 100 = 100%

*For complete list of products, visit our website at www.valmont.com or call 1-800-894-7377. Valmont Industries, Inc. • 26000 E. 1st Avenue • Fort Worth, Texas 76126 • (817) 694-7377 • www.valmont.com A 2-3

valmont
STRUCTURES
A LUDAX GROUP

A	B	C	D	E	F
SALE PRICE	LIST PRICE	SALE PRICE	LIST PRICE	CONVERTED PRICE	
5"	7 1/2" - 9 1/2"	3 1/4"	3 1/4" x 17"	4 1/2"	6 1/4"
6"	8 1/4" - 10 1/4"	3 1/2"	3 1/4" x 17"	4 1/2"	10 1/4"
7"	6 7/8" - 11 1/4"	4 1/8"	3 1/4" x 17"	4 1/2"	10 3/8"
8"	11 - 13 1/8"	4 1/4"	1" x 36"	4 1/2"	11 5/8"
10"	14 - 17"	4 1/2"	1" x 36"	6 1/2"	14 1/2"
10 1/2"	14 - 17 1/2"	4 1/2"	1 1/4" x 48"	6 1/2"	14 1/2"

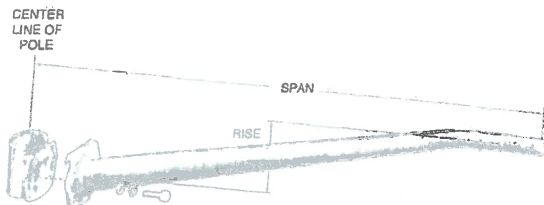
[illegible]

ANNUAL MEAN WIND SPEED		WIND DIRECTION BY QUANTILE										WIND DIRECTION BY QUANTILE				
WINDING DIRECTION	WINDING SPEED	WIND DIRECTION BY QUANTILE										WIND DIRECTION BY QUANTILE				
		7C	7C	9C	9C	11C	11C	13C	13C	15C	15C	17C	17C	19C	19C	
20°	140	2.2	3.6	3.5	1.9	1.2	1.1	1.1	1.1	1.1	1.1	1.1	1.1	1.1		
20°	140	2.2	3.6	3.5	1.9	1.2	1.1	1.1	1.1	1.1	1.1	1.1	1.1			
20°	140	12.3	8.7	6.1	4.5	3.3	1.9	1.1	1.1	1.1	1.1	1.1	1.1			
20°	140	14.5	11.3	6.4	6.6	6.2	1.2	1.1	1.1	1.1	1.1	1.1	1.1			
20°	140	9.8	16.4	15.8	8.8	6.6	1.2	1.1	1.1	1.1	1.1	1.1	1.1			
20°	140	22.9	17.7	13.4	10.6	6.6	1.2	1.1	1.1	1.1	1.1	1.1	1.1			
23°	140	11.8	8.0	5.8	4.4	3.3	2.2	1.1	1.1	1.1	1.1	1.1	1.1			
23°	140	14.7	10.4	7.8	6.6	4.7	2.2	1.1	1.1	1.1	1.1	1.1	1.1			
23°	140	7.7	12.1	7.4	7.4	6.2	2.2	1.1	1.1	1.1	1.1	1.1	1.1			
23°	140	26.5	19.1	15.1	11.9	6.2	2.2	1.1	1.1	1.1	1.1	1.1	1.1			
23°	140	39.8	24.4	16.8	13.1	1.1	2.2	1.1	1.1	1.1	1.1	1.1	1.1			
23°	140	8.2	4.5	3.3	1.8	1.1	2.2	1.1	1.1	1.1	1.1	1.1	1.1			
23°	140	12.7	8.2	4.5	4.5	2.2	2.2	1.1	1.1	1.1	1.1	1.1	1.1			
23°	140	15.0	11.2	8.5	6.6	4.0	2.2	1.1	1.1	1.1	1.1	1.1	1.1			
23°	140	16.7	12.8	10.0	8.0	3.8	2.2	1.1	1.1	1.1	1.1	1.1	1.1			
23°	140	28.5	21.2	16.2	12.8	10.4	2.2	1.1	1.1	1.1	1.1	1.1	1.1			
23°	140	5.1	5.1	3.3	2.2	3.3	2.2	1.1	1.1	1.1	1.1	1.1	1.1			
23°	140	18.2	13.1	9.9	7.0	4.0	2.2	1.1	1.1	1.1	1.1	1.1	1.1			
23°	140	23.7	16.9	12.9	10.1	8.0	2.2	1.1	1.1	1.1	1.1	1.1	1.1			
23°	140	31.1	24.1	18.6	14.7	11.8	2.2	1.1	1.1	1.1	1.1	1.1	1.1			
23°	140	24.3	17.8	13.8	10.8	8.0	2.2	1.1	1.1	1.1	1.1	1.1	1.1			
23°	140	51.2	43.1	33.1	25.4	21.3	2.2	1.1	1.1	1.1	1.1	1.1	1.1			

LE SECTIONS 7 AND 8 FOR MOUNTING ARMS ON POLES.

- * All vehicles are based on a 1/2 Ton (2500 lbs) chassis but some listed above, available upon inquiry at the factory. Safety features and performance of lifting poles is dependent upon the pole being properly installed in a supporting structure of adequate design. Vehicle does not replace (a) other recommendations for foundation.
- * Pole structure does not include necessary options or field adaptation.
- * Pole includes safety related standard equipment.

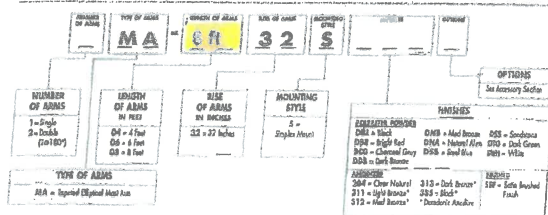
**4', 6' AND 8' TAPERED
SIMPLEX MOUNT ELLIPTICAL MAST ARMS**

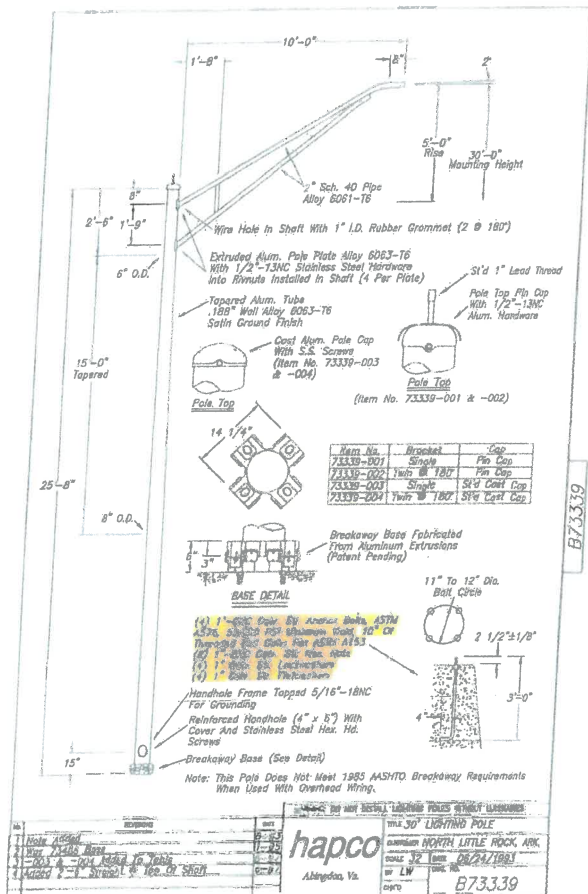


SIMPLEX MOUNT SPECIFICATIONS

- The most arm is centrally located from 3-1/2" O.D. x 125' wall 6063 alloy extruded aluminum tube to 2-3/8" O.D. (2" pipe sized at the luminaires end). The tapered stub is slightly with the long axis oriented vertically. Each arm is joined to the aluminum system by a continuous circumferential weld. Each arm is heat treated after welding to produce a 16 temp. All arms are acted to create a series of flat, A, B, C, D, E, F, G, H, I, J, K, L, M, N, O, P, Q, R, S, T, U, V, W, X, Y, Z, AA, AB, AC, AD, AE, AF, AG, AH, AI, AJ, AK, AL, AM, AN, AO, AP, AQ, AR, AS, AT, AU, AV, AW, AX, AY, AZ, BA, BB, BC, BD, BE, BF, BG, BH, BI, BJ, BK, BL, BM, BN, BO, BP, BQ, BR, BS, BT, BU, BV, BW, BX, BY, BZ, CA, CB, CC, CD, CE, CF, CG, CH, CI, CJ, CK, CL, CM, CN, CO, CP, CQ, CR, CS, CT, CU, CV, CW, CX, CY, CZ, DA, DB, DC, DD, DE, DF, DG, DH, DI, DJ, DK, DL, DM, DN, DO, DP, DQ, DR, DS, DT, DU, DV, DW, DX, DY, DZ, EA, EB, EC, ED, EE, EF, EG, EH, EI, EJ, EK, EL, EM, EN, EO, EP, EQ, ER, ES, ET, EU, EV, EW, EX, EY, EZ, FA, FB, FC, FD, FE, FF, FG, FH, FI, FJ, FK, FL, FM, FN, FO, FP, FQ, FR, FS, FT, FU, FV, FW, FX, FY, FZ, GA, GB, GC, GD, GE, GF, GG, GH, GI, GJ, GK, GL, GM, GN, GO, GP, GQ, GR, GS, GT, GU, GV, GW, GX, GY, GZ, HA, HB, HC, HD, HE, HF, HG, HH, HI, HJ, HK, HL, HM, HN, HO, HP, HQ, HR, HS, HT, HU, HV, HW, HX, HY, HZ, IA, IB, IC, ID, IE, IF, IG, IH, II, IJ, IK, IL, IM, IN, IO, IP, IQ, IR, IS, IT, IU, IV, IW, IX, IY, IZ, JA, JB, JC, JD, JE, JF, JG, JH, JI, JJ, JK, JL, JM, JN, JO, JP, JQ, JR, JS, JT, JU, JV, JW, JX, JY, JZ, KA, KB, KC, KD, KE, KF, KG, KH, KI, KJ, KK, KL, KM, KN, KO, KP, KQ, KR, KS, KT, KU, KV, KW, KX, KY, KZ, LA, LB, LC, LD, LE, LF, LG, LH, LI, LJ, LK, LL, LM, LN, LO, LP, LQ, LR, LS, LT, LU, LV, LW, LX, LY, LZ, MA, MB, MC, MD, ME, MF, MG, MH, MI, MJ, MK, ML, MM, MN, MO, MP, MQ, MR, MS, MT, MU, MV, MW, MX, MY, MZ, NA, NB, NC, ND, NE, NF, NG, NH, NI, NJ, NK, NL, NM, NN, NO, NP, NQ, NR, NS, NT, NU, NV, NW, NX, NY, NZ, OA, OB, OC, OD, OE, OF, OG, OH, OI, OJ, OK, OL, OM, ON, OO, OP, OQ, OR, OS, OT, OU, OV, OW, OX, OY, OZ, PA, PB, PC, PD, PE, PF, PG, PH, PI, PJ, PK, PL, PM, PN, PO, PP, PQ, PR, PS, PT, PU, PV, PW, PX, PY, PZ, QA, QB, QC, QD, QE, QF, QG, QH, QI, QJ, QK, QL, QM, QN, QO, QP, QQ, QR, QS, QT, QU, QV, QW, QX, QY, QZ, RA, RB, RC, RD, RE, RF, RG, RH, RI, RJ, RK, RL, RM, RN, RO, RP, RQ, RR, RS, RT, RU, RV, RW, RX, RY, RZ, SA, SB, SC, SD, SE, SF, SG, SH, SI, SJ, SK, SL, SM, SN, SO, SP, SQ, SR, SS, ST, SU, SV, SW, SX, SY, SZ, TA, TB, TC, TD, TE, TF, TG, TH, TI, TJ, TK, TL, TM, TN, TO, TP, TQ, TR, TS, TT, TU, TV, TW, TX, TY, TZ, UA, UB, UC, UD, UE, UF, UG, UH, UI, UJ, UK, UL, UM, UN, UO, UP, UQ, UR, US, UT, UY, UV, UW, UX, UY, UZ, VA, VB, VC, VD, VE, VF, VG, VH, VI, VJ, VK, VL, VM, VN, VO, VP, VQ, VR, VS, VT, VU, VV, VW, VX, VY, VZ, WA, WB, WC, WD, WE, WF, WG, WH, WI, WJ, WK, WL, WM, WN, WO, WP, WQ, WR, WS, WT, WU, WV, WW, WX, WY, WZ, XA, XB, XC, XD, XE, XF, XG, XH, XI, XJ, XK, XL, XM, XN, XO, XP, XQ, XR, XS, XT, XU, XV, XW, XX, XY, XZ, YA, YB, YC, YD, YE, YF, YG, YH, YI, YJ, YK, YL, YM, YN, YO, YP, YQ, YR, YS, YT, YU, YV, YW, YX, YY, YZ, ZA, ZB, ZC, ZD, ZE, ZF, ZG, ZH, ZI, ZJ, ZK, ZL, ZM, ZN, ZO, ZP, ZQ, ZR, ZS, ZT, ZU, ZV, ZW, ZX, ZY, ZZ.
- Similar mounted mast arms are held in place by (3) interlocking aluminum castings. One is welded to the lifting rod and the second one is welded to the mast arm. The connection is secured with (2) series 300 stainless steel 1/2-13 UNC lock washers. One lock is welded. Similar arms for A, B, C, D, E, F, G, H, I, J, K, L, M, N, O, P, Q, R, S, T, U, V, W, X, Y, Z, AA, AB, AC, AD, AE, AF, AG, AH, AI, AJ, AK, AL, AM, AN, AO, AP, AQ, AR, AS, AT, AU, AV, AW, AX, AY, AZ, BA, BB, BC, BD, BE, BF, BG, BH, BI, BJ, BK, BL, BM, BN, BO, BP, BQ, BR, BS, BT, BU, BV, BW, BX, BY, BZ, CA, CB, CC, CD, CE, CF, CG, CH, CI, CJ, CK, CL, CM, CN, CO, CP, CQ, CR, CS, CT, CU, CV, CW, CX, CY, CZ, DA, DB, DC, DD, DE, DF, DG, DH, DI, DJ, DK, DL, DM, DN, DO, DP, DQ, DR, DS, DT, DU, DV, DW, DX, DY, DZ, EA, EB, EC, ED, EE, EF, EG, EH, EI, EJ, EK, EL, EM, EN, EO, EP, EQ, ER, ES, ET, EU, EV, EW, EX, EY, EZ, FA, FB, FC, FD, FE, FF, FG, FH, FI, FJ, FK, FL, FM, FN, FO, FP, FQ, FR, FS, FT, FU, FV, FW, FX, FY, FZ, GA, GB, GC, GD, GE, GF, GG, GH, GI, GJ, GK, GL, GM, GN, GO, GP, GQ, GR, GS, GT, GU, GV, GW, GX, GY, GZ, HA, HB, HC, HD, HE, HF, HG, HH, HI, HJ, HK, HL, HM, HN, HO, HP, HQ, HR, HS, HT, HU, HV, HW, HX, HY, HZ, IA, IB, IC, ID, IE, IF, IG, IH, II, IJ, IK, IL, IM, IN, IO, IP, IQ, IR, IS, IT, IU, IV, IW, IX, IY, IZ, JA, JB, JC, JD, JE, JF, JG, JH, JI, JJ, JK, JL, JM, JN, JO, JP, JQ, JR, JS, JT, JU, JV, JW, JX, JY, JZ, KA, KB, KC, KD, KE, KF, KG, KH, KI, KJ, KK, KL, KM, KN, KO, KP, KQ, KR, KS, KT, KU, KV, KW, KX, KY, KZ, LA, LB, LC, LD, LE, LF, LG, LH, LI, LJ, LK, LL, LM, LN, LO, LP, LQ, LR, LS, LT, LU, LV, LW, LX, LY, LZ, MA, MB, MC, MD, ME, MF, MG, MH, MI, MJ, MK, ML, MM, MN, MO, MP, MQ, MR, MS, MT, MU, MV, MW, MX, MY, MZ, NA, NB, NC, ND, NE, NF, NG, NH, NI, NJ, NK, NL, NM, NN, NO, NP, NQ, NR, NS, NT, NU, NV, NW, NX, NY, NZ, OA, OB, OC, OD, OE, OF, OG, OH, OI, OJ, OK, OL, OM, ON, OO, OP, OQ, OR, OS, OT, OU, OV, OW, OX, OY, OZ, PA, PB, PC, PD, PE, PF, PG, PH, PI, PJ, PK, PL, PM, PN, PO, PP, PQ, PR, PS, PT, PU, PV, PW, PX, PY, PZ, QA, QB, QC, QD, QE, QF, QG, QH, QI, QJ, QK, QL, QM, QN, QO, QP, QQ, QR, QS, QT, QU, QV, QW, QX, QY, QZ, RA, RB, RC, RD, RE, RF, RG, RH, RI, RJ, RK, RL, RM, RN, RO, RP, RQ, RR, RS, RT, RU, RV, RW, RX, RY, RZ, SA, SB, SC, SD, SE, SF, SG, SH, SI, SJ, SK, SL, SM, SN, SO, SP, SQ, SR, SS, ST, SU, SV, SW, SX, SY, SZ, TA, TB, TC, TD, TE, TF, TG, TH, TI, TJ, TK, TL, TM, TN, TO, TP, TQ, TR, TS, TT, TU, TV, TW, TX, TY, TZ, UA, UB, UC, UD, UE, UF, UG, UH, UI, UJ, UK, UL, UM, UN, UO, UP, UQ, UR, US, UT, UY, UV, UW, UX, UY, UZ, VA, VB, VC, VD, VE, VF, VG, VH, VI, VJ, VK, VL, VM, VN, VO, VP, VQ, VR, VS, VT, VU, VV, VW, VX, VY, VZ, WA, WB, WC, WD, WE, WF, WG, WH, WI, WJ, WK, WL, WM, WN, WO, WP, WQ, WR, WS, WT, WU, WV, WW, WX, WY, WZ, XA, XB, XC, XD, XE, XF, XG, XH, XI, XJ, XK, XL, XM, XN, XO, XP, XQ, XR, XS, XT, XU, XV, XW, XX, XY, XZ, YA, YB, YC, YD, YE, YF, YG, YH, YI, YJ, YK, YL, YM, YN, YO, YP, YQ, YR, YS, YT, YU, YV, YW, YX, YY, YZ, ZA, ZB, ZC, ZD, ZE, ZF, ZG, ZH, ZI, ZJ, ZK, ZL, ZM, ZN, ZO, ZP, ZQ, ZR, ZS, ZT, ZU, ZV, ZW, ZX, ZY, ZZ.
- The following charts show the maximum allowable fixture (APA) for the five wind areas acknowledged by AASHTO. The allowable APA is based on a maximum allowable fixture (APA) of 75 pounds unless noted on the chart.
- Alternative arm lengths, rises, and mounting systems are available.

CATALOG LOGIC

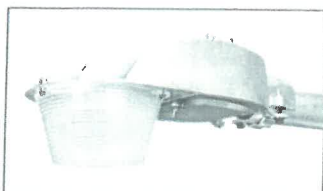






WATCH LIGHT Series WLT LED Security Lighting

PRODUCT OVERVIEW



Features:

OPTICAL

Durable prismatic glass optics
Wide variety of lumen packages in type 3 & 5 distributions
Optional acrylic refractor provides additional vertical foot-candles
3000K & 4000K CCT, 70 CRI minimum

ELECTRICAL

120 – 277 volt
Ships standard with 0-10V dimmable driver, or optional DALI D4i driver
Robust Surge Protection: Three different surge protection options provide a minimum of 6kV/3kA, 10kV/5kA or 20kV/10kA protection, per ANSI C136.2
Expected Life: LED light engines are rated >100,000 hours at 25°C, L70. Electronic driver has an expected life of 100,000 hours at a 25°C ambient.
Lower Energy: Saves an expected of 40-60% over comparable HID luminaires.

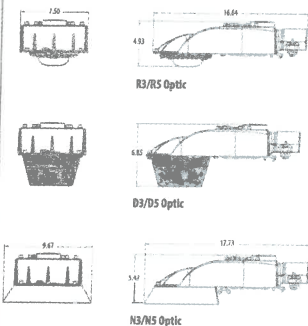
MECHANICAL

All aluminum housing & door
2-bolt mounting with +/- 5° adjustment
Mast arm mount is adjustable for arms from 1-1/4" to 2" (1-5/8" to 2-3/8" O.D.) diameter.
Provides a 3G vibration rating per ANSI C136.31
Optional stainless steel trim/brow for tool-less entry
ANSI standard wattage label on all units
Rigorous pre-treatment and paint process (GY option) yields a finish that achieves a scribe creepage rating of 10 (per ASTM D1654) after 5000 hours exposure to salt fog chamber (operated per ASTM B117).

CONTROLS

The Acuity designed ANSI 7-pin receptacle is available, which supports traditional locking style photocontrols such as the Extreme long-life solid-state locking style photocontrol - PCL (20 year rated life).
The DC Connect option is a factory embedded low voltage dusk to dawn photocontrol that increases longevity vs. line voltage control and also eliminates the need to separately inventory controls.
The Local Connect option provides a simple means to collect luminaire attribute data, asset location information and execute point-to-point on/off/dim commands via secure Bluetooth link using smartphone platforms.
Cell Connect is an embedded network photocontrol with cellular communication. It provides digital switching, precise dimming, and reverse grade methodology. Cell Connect leverages D4i drivers to communicate real-time data to UbiVu, a cloud-based asset management system.

DIMENSIONS



Effective Projected Area (EPA). The EPA for the WLT is 0.35 sq. ft. Weighs 7.5 lbs. (3.4 kg)

STANDARDS

Rated for -40°C to 40°C ambient
CSA Certified to U.S. and Canadian standards
Complies with ANSI: C136.2, C136.10, C136.31, C136.15, C136.37
DesignLights Consortium® (DLC) Premium qualified product. Not all versions of this product may be DLC Premium qualified. Please check the DLC Qualified Products List at www.designlights.org/QP to confirm which versions are qualified.

WLT LED Security Lighting

ORDERING INFORMATION

Series		Lumen Package		Voltage		Driver		Optics		Color Temperature	
NKT	Natch Light	A	34W, 5,000 Nominal Lumens	NKT01	Multiple Voltage 120V-277VAC	ZT	0-10V dimmable	R3	roadway Type-3	SR	3000K Color Temperature, 70CRI
		B	43W, 6,300 Nominal Lumens			D4I	DALI D4I driver for 120-277VAC	R5	roadway Type 5		
		C	51W, 7,400 Nominal Lumens			N3	Type 3 - zero uplight	AK	4000SE Color Temperature, 79CRI		
		D	62W, 9,100 Nominal Lumens			N5	Type 3 with Drop Reflector				
		E	72W, 10,200 Nominal Lumens			ES	Type 5 with Drop Reflector				
F	79W, 11,100 Nominal Lumens										
Paint		Surge protection		Miscellaneous		Receptacle Top		Receptacle Bottom			
EM	EnduraShield® Paintable	GTY	Gray Super Durable paint	6K7	6KV/18kA, no supplemental surge device	RT	functional boards	F3	3 Pin NEMA Photocoupled Receptacle	NBR	No Receptacle Bottom
				SMP	10kV/25kA, 1in. 6in. spacing	LTS	Light trespass shield	ZB	Zero Oncoming Capable Photocoupled Receptacle	ZNB	Zhaga Receptacle Bottom
20	20kV/10kA Full OFF device	CC	ULCISA Certified	PW#	Pin-wire, # indicates wire length in one foot increments from 1" thru 10" (e.g. PW4 = 4' of pre-wire)	ZRT	Zhaga Receptacle top	NTR	No Top Receptacle		
		JP	Job Pack (30 per pallet)								
Photo Control		Embedded Controls		Install Packages		Accessories (Shipped Separately)		Controls Training			
SH	Shorting Cap	ALC0	Local Connect Basic (DTL, DELC)	PWG24	DTL DCL photocentral + 24" x 1-1/4" arm	WLTS15	Light Trespas Shield for R3 & R5 Optics	LCTR1N	Local Connect Remote Training: 1 day training provided by Academy Services Team		
PCL	DTL DCL Photocentral	ALCF	Local Connect Full (DTL, DELC)	PWG24	DTL DEP photocentral + 24" x 1-1/4" arm	WLTS30N	Light Trespas Shield for R3 & R5 Optics				
DZP	DTL DZP DC Zhaga Photo Control	ALCC	Local Connect Custom (DTL, DELC) Requires RFU	PWG24	DTL DZP photocentral + 24" x 1-1/4" arm	WLTS15D	Light Trespas Shield for R3 & R5 Optics				
		DDC	DC Connect Photocentral (DTL, DEP)		All packages ship with 5' prewire and mounting hardware	WLTS5	Street side Shield for R3, R5, N3, & R5 Optics				
		UBC	Cell Connect			WLTRN	Zero-uplight Shield				
						WLTRF	Down Reflector				

NOTES

1. When selected, the CC (UL/CSA Certified) option includes a 3 position terminal block in luminaire. Selection of TB option is not required in that case.
2. TB (Terminal Block) option is not required if CC (UL/CSA Certified) option is also selected.
3. Not available with UBC option.

AEL American
Electric
Lighting
AEL Headquarters, One Lithia Way, Conyers Georgia 30012
www.americanalectriclighting.com Phone: 1-866-HOLOPHONE
Email: TechSupport-Lighting@acuitybrands.com
© 2016-2024 Acuity Brands Lighting, Inc. All Rights Reserved.

Warranty Five-year limited warranty. This is the only warranty provided and no other statements in this specification sheet create any warranty of any kind. All other express and implied warranties are disclaimed. Complete warranty terms located at:

Note: Actual performance may differ as a result of end-user environment and application. All values are design or typical values, measured under laboratory conditions at 25 °C. Specifications subject to change without notice.

Please contact your sales representative for the latest product information.

Please contact your sales representative for the latest product information.

WATCH LIGHT Series WLT LED Security Lighting

OPTIONS MATRIX

VELT		Driver			Receptacle Top			Receptacle Bottom		Photocells			Embedded Controls				
		ZT	D4I	NTR	P3	P7	ZRT	NBR	ZBR	SH	PCLL	DGP	DDC	ALCB	ALCF	ALCC	UBC
Driver	ZT			Y	Y	N	Y	N	Y	Y	Y	N	N	N	N	N	N
	D4I			Y	Y	N	Y	N	Y	Y	Y	N	N	N	N	N	N
Receptacle Top	NTR	Y	Y					Y	Y	N	N	N	Y	Y	Y	Y	Y
	P3	Y	Y					Y	Y	N	N	N	N	N	N	N	N
Receptacle Bottom	P7	Y	Y					Y	Y	Y	Y	N	Y	Y	Y	Y	N
	ZRT	N	Y					Y	Y	N	Y	Y	Y	Y	Y	Y	N
Photocells	NBR	Y	Y	Y	Y	Y	Y			Y	Y	Y	Y	Y	Y	Y	Y
	ZBR	N	Y	Y	N	Y	Y	Y	Y	Y	Y	Y	Y	Y	Y	Y	Y
Embedded Controls	SH	Y	Y	N	Y	Y	N	Y	Y	Y	Y	Y	N	N	N	N	Y
	PCLL	Y	Y	N	Y	Y	N	Y	Y				N	N	N	N	N
Embedded Controls	DGP	N	Y	N	N	N	Y	Y	Y				N	N	N	N	N
	DDC	N	Y	Y	N	Y	Y	N	Y	N	N		N	N	N	N	N
	ALCB	N	Y	Y	N	Y	Y	N	Y	N	N	N					
	ALCF	N	Y	Y	N	Y	Y	N	Y	N	Y	N					
	ALCC	N	Y	Y	N	Y	Y	N	Y	N	Y	N					
	UBC	N	Y	Y	N	N	N	Y	N	N	N	N					

Y = Option combination is allowed
N = Option combination is not allowed

DALI Driver Option Defaults				
Setting	Receptacle Top	Receptacle Bottom	Embedded Control	Default Value
DALI Power Bus	NTR	NBR	none	ON
	NTR	NBR	ALCB / ALCF / ALCC	ON
	NTR	NBR	DDC	ON
	NTR	NBR	none	ON
	NTR	NBR	UBC	ON
	NTR	NBR	UBC	ON
	P7	NBR	ALCB / ALCF / ALCC	ON
	P7	NBR	DDC	ON
	P7	NBR	none	OFF
	ZRT	NBR	none	ON
Dimming Type	ZRT	NBR	ALCB / ALCF / ALCC	ON
	ZRT	NBR	DDC	ON
	ZRT	NBR	none	ON
	ZRT	NBR	none	ON
24V AUX	AI	AI	Any	ON
Screen Data	AI	AI	Any	ON

*To program different settings, consult factory; RFD is required

AEL American Electric Lighting
AEL Headquarters, One Lithonia Way, Lithonia, Georgia 30058
www.american-electric-lighting.com Phone 1-888-103-DPLANE
Email: TechSupport@aelighting.com
© 2015-2021 Acuity Brands Lighting, Inc. All Rights Reserved. WLT Rev. 06/21/24

Warranty: Five-year limited warranty. This is the only warranty provided and no other statements in this specification sheet create any warranty of any kind. All other express and implied warranties are disclaimed. Complete warranty terms located at: <https://www.aelighting.com/warranty>

Notes: Actual performance may differ as a result of end-user environment and application. All values are design or typical values, measured under laboratory conditions at 25 °C. Specifications subject to change without notice.

Please contact your sales representative for the latest product information.

WATCH LIGHT Series WLT LED Security Lighting

PERFORMANCE PACKAGES

WLT Watch Light Performance

WLT Perf Pkg	Distribution	Input Watts	3000K		4000K		BUG Rating			LDO @ 25°C		
			Lumens	LPW	Lumens	LPW	B	U	G	50k hours	75k hours	100k hours
A	R3	34	4,971	146	5,253	145	2	3	2	0.92	0.89	0.85
	R5		5,142	151	5,207	154	2	2	1			
	N3		4,836	138	4,721	139	2	0	1			
	D3		4,831	142	4,821	144	2	0	1			
	D5		4,872	146	4,943	145	2	3	2			
B	R3	43	6,205	144	5,354	143	2	3	1	0.92	0.88	0.85
	R5		6,419	149	6,339	152	2	2	1			
	N3		5,787	134	5,884	137	2	0	1			
	D3		6,081	140	6,143	143	2	0	1			
	D5		6,059	141	6,171	143	2	3	2			
C	R3	51	6,209	144	5,222	147	2	3	1	0.92	0.89	0.85
	R5		7,254	141	7,289	143	2	3	2			
	N3		7,504	148	7,842	148	3	2	1			
	D3		7,765	131	6,890	134	2	0	1			
	D5		7,059	137	7,181	139	2	0	1			
D	R3	62	7,082	137	7,213	140	2	3	2	0.92	0.89	0.85
	R5		7,256	141	7,380	143	2	3	1			
	N3		6,808	142	6,072	145	2	3	2			
	D3		8,207	133	8,460	135	2	0	1			
	D5		8,857	138	8,817	141	2	0	1			
E	R3	72	8,667	139	8,857	142	2	3	2	0.92	0.89	0.85
	R5		8,910	142	8,075	145	2	3	1			
	N3		10,073	139	10,258	141	2	3	2			
	D3		10,419	143	10,812	145	3	2	1			
	D5		9,383	130	9,587	131	2	0	1			
F	R3	79	9,790	134	9,771	137	2	0	1	0.82	0.88	0.85
	R5		8,434	135	10,616	137	2	3	2			
	N3		10,075	136	10,282	141	2	3	1			
	D3		10,942	138	11,149	140	2	3	2			
	D5		11,318	142	11,528	145	3	2	3			

Performance Package	Watts	Current (A)			
A	30	0.25	0.14	0.13	0.11
B	40	0.33	0.19	0.17	0.14
C	50	0.42	0.24	0.21	0.18
D	60	0.50	0.29	0.25	0.22
E	70	0.58	0.34	0.29	0.25
F	80	0.67	0.38	0.33	0.29

AMBIENT TEMPERATURE FACTOR						
1.04	1.04	1.04	1.03	1.03	1.03	1.03
1.01	1.02	1.02	1.01	1.01	1.01	1.01
1.00	1.00	1.00	1.00	1.00	1.00	1.00
0.98	0.98	0.98	0.99	0.99	0.99	0.99
0.95	0.97	0.97	0.98	0.98	0.98	0.98

AEL American Electric Lighting
 AEL Headquarters, One Liberty Way, Conyers, Georgia 30012
 www.americanelectriclighting.com Phone: 1-866-HOLOPHANE
 Email: TechSupport@lightingbyaelf.com
 © 2016-2024 Acuity Brands Lighting, Inc. All Rights Reserved. WLT Rev. 06/2/24

Warranty Five-year limited warranty. This is the only warranty provided and no other statements in this specification shall create any warranty of any kind. All other express and implied warranties are disclaimed. Complete warranty terms located at <https://www.ael.com/usa/locations/conyers-georgia>
Note: Actual performance may differ as a result of end-user environment and application. All values are design or typical values, measured under laboratory conditions at 25°C. Specifications subject to change without notice.
 Please contact your sales representative for the latest product information.



NORTH LITTLE ROCK ELECTRIC DEPARTMENT

**The attached drawing details the specifications for the NLR Electric Department
Street Light Poles**

Reference NLRED Stock Numbers:

XPD00025

XPD00030

XPD00031

For questions concerning LED fixtures please contact:

**NLR ELECTRIC DEPARTMENT
ENGINEERING SECTION
GREG WOODWARD
501-992-4073**

GENERAL TERMS AND CONDITIONS FOR THE CITY OF NORTH LITTLE ROCK, AR

1. When submitting an "Invitation to Bid," the bidder warrants that the commodities covered by the bid shall be free from defects in material and workmanship under normal use and service. In addition, bidder must deliver new commodities of the latest design and model, unless otherwise specified in the "Invitation to Bid."
2. Prices quoted are to be net process, and when an error is made in extending total prices, the City may accept the bid for the lesser amount whether reflected by extension or by the correct multiple of the unit price.
3. Discounts offered will be taken when the City qualifies for such. The beginning date for computing discounts will be the date of invoice or the date of delivery and acceptance, whichever is later.
4. When bidding other than the brand and/or model specified in the "Invitation to Bid," the brand and/or model number must be stated by that item in the "Invitation to Bid," and descriptive literature be submitted with the bid.
5. **REJECTION**
 - A. The City reserves the right to reject any or all Bids, to waive any minor informality or irregularity in any Bid, to negotiate changes and/or modifications with the lowest responsible bidder and to make award to the response deemed to be the most advantageous to the City. Bidders shall be required to comply with all applicable federal, state and local laws.
 - B. The City reserves the right to cancel request for bids without penalty with it is in the best interest of the City. Notice of Cancellation shall be inserted on the City's website (www.nlr.ar.gov).
 - C. Any Bid not conforming to the specifications or requirements set forth by the City in this Bid Request may be rejected.
 - D. Bids may be also rejected if they are made by a Bidder that is deemed un-responsible due to lack of qualifications, capacity, skill, character, experience, reliability, financial stability or quality of services, supplies, materials, equipment or labor.
 - E. The City of North Little Rock reserves the right to reject any and all bids, to accept in whole or in part, to waive any informalities in bids received, to accept bids on materials or equipment with variations from specifications in those cases where efficiency of operation will not be impaired, and unless otherwise specified by the bidder, to accept any item in the bid. If unit prices and extensions thereof do not coincide, the City of North Little Rock may accept the bid for the lesser amount whether reflected by the extension or by the correct multiple of the unit price
6. The Purchasing office reserves the right to award items, all or none, or by line item(s).
7. Quality, time and probability of performance may be factors in making an award.
8. Bid quotes submitted will remain firm for 30 calendar days from bid opening date; however, the prices may remain firm for a longer period of time if mutually agreeable between bidder and the Purchasing Office.
9. Bidder must submit a completed signed copy of the front page of the "Invitation to Bid" and must submit any other information required in the "Invitation to Bid."
10. In the event a contract is entered into pursuant to the "Invitation to Bid," the bidder shall not discriminate against any qualified employee or qualified applicant for employment because of race, sex, color, creed, national origin or ancestry. The bidder must include in any and all subcontracts a provision similar to the above.
11. Sales or use tax is not to be included in the bid price, but is to be added by the vendor to the invoice billing to the City. Although use tax is not to be included in this bid, vendors are to register and pay tax direct to the Arkansas State Revenue Department.

12. Prices quoted shall be "Free on Board" (F.O.B.) to destination at designated facility in North Little Rock. Charges may not be added after the bid is opened.
13. In the event of two or more identical low bids, the contract may be awarded arbitrarily or for any reason to any of such bidders or split in any proportion between them at the discretion of the Purchasing Office.
14. Specifications furnished with this Invitation are intended to establish a desired quality or performance level, or other minimum dimensions and capacities, which will provide the best product available at the lowest possible price. Other than designated brands and/or models approved as equal to designated products shall receive an equal consideration.
15. Samples of items when required, must be furnished free, and, if not called for within 30 days from date of bid opening, will become property of the City.
16. Bids will not be considered if they are:
 1. Submitted after the bid's opening time.
 2. Submitted electronically or faxed (unless authorized by Purchasing Manager).
17. Guarantees and warranties should be submitted with the bid, as they may be a consideration in making an award.
18. **CONSTRUCTION**
 - A. Contractor is to supply the City with evidence of having and maintaining proper and complete insurance, specifically Workman's Compensation Insurance in accordance with the laws of the State of Arkansas, Public Liability and Property Damage. All premiums and cost shall be paid by the Contractor. In no way will the City be responsible in case of accident.
 - B. When noted, a Certified check or bid bond in the amount of 5% of total bid shall accompany bid.
 - C. A Performance Bond equaling the total amount of any bid exceeding \$50,000.00 must be provided for any contract for the repair, alteration or erection of any public building, public structure or public improvement (pursuant to Arkansas Code Annotated Section 22-9-203).
19. **LIQUIDATED DAMAGES** – Liquidated damages shall be determined at the time of contract negotiations, based upon the construction contract price and stated time period set for completion of the project. Liquidated damages shall be assessed beginning on the first day following the maximum delivery or completion time entered on this bid form and/or provided for by the plans and specifications.
20. **AMBIGUITY IN BID** - Any ambiguity in any bid as the result of omission, error, lack of clarity or non-compliance by the bidder with specifications, instructions, and all conditions of bidding shall be construed in the light most favorable to the City.
21. The bid number should be stated on the face of the sealed bid envelope. If it is not, the envelope will have to be opened to identify.
22. Whenever a bid is sought seeking a source of supply for a specified period of time for materials and services, the quantities of usage shown are estimated ONLY. No guarantee or warranty is given or implied by the participants as to the total amount that may or may not be purchased from any resulting contracts. These quantities are for the bidders information ONLY and will be used for tabulation and presentation of bid and the participant reserves the right to increase or decrease quantities as required.

23. The City of North Little Rock will follow procedures to check bidder eligibility through the federal System for Award Management (S.A.M.) as outlined in 2 C.F.R. § 200. This will be completed prior to the award of any contract in which federal grant funds will be expended.
24. Respondents acknowledge and understand that upon award of the winning Bid, the Respondent will be required to review and sign a contract with the City of North Little Rock, which will contain additional terms and conditions, prior to providing any services to the City. In the event of any discrepancy or contradiction between the bid documents, Terms and Conditions or other such documents, the provisions in the contract shall take precedence.
25. Additional information or bid forms may be obtained from:

COMMERCE DEPARTMENT, 700 West 29th Street, P.O. Box 5757, North Little Rock, Arkansas 72119 (501)975-8881
www.nlr.ar.gov

Bidding documents must be submitted on or before the bid's opening date and time. Unless noted, bids must be sealed and mailed or delivered to:

**Amy Smith, Purchasing Manager
Commerce Department
700 W. 29th Street, 3rd Floor
North Little Rock, AR 72114**

The City of North Little Rock is committed to fair and equal opportunity in employment and service delivery regardless of race, color religion, gender, age, disability, sexual orientation, gender identity or expression, genetic information, marital status, national origin, or veteran status. This policy statement reinforces and communicates that commitment to employees.