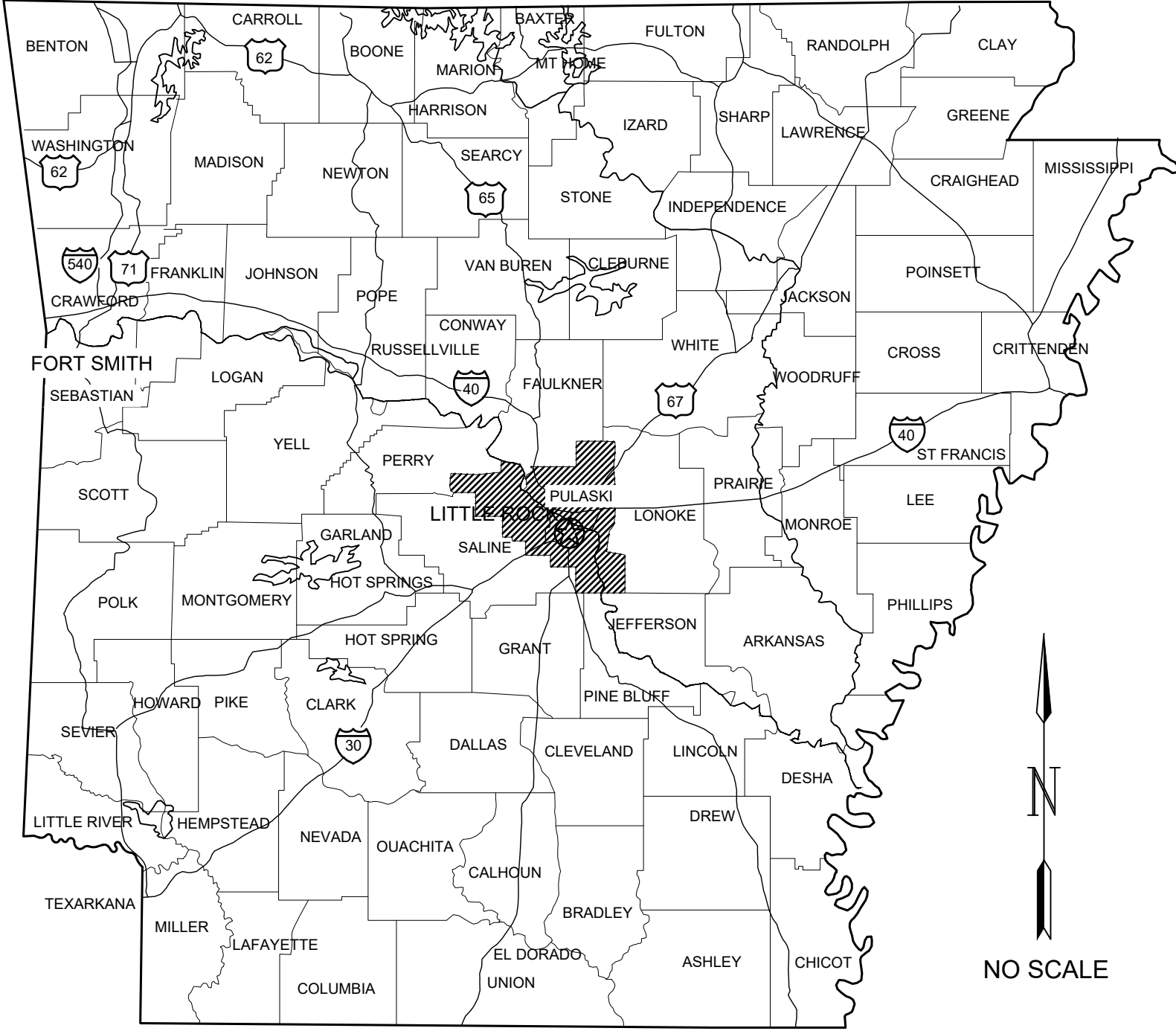


# NORTH LITTLE ROCK ELECTRIC DEPARTMENT CITY OF NORTH LITTLE ROCK, AR.

## CANOPIES SITE PLAN NORTH LITTLE ROCK AIRPORT NORTH LITTLE ROCK, ARKANSAS

SHEET LIST TABLE	
Sheet Number	Sheet Title
G-001	COVER SHEET
C-001	EXISTING CONDITIONS PLAN
C-010	DEMOLITION PLAN
C-101	SITE PLAN
C-121	GRADING AND EROSION CONTROL PLAN
C-501	CIVIL DETAILS
C-502	EROSION CONTROL DETAILS



ARKANSAS STATE MAP

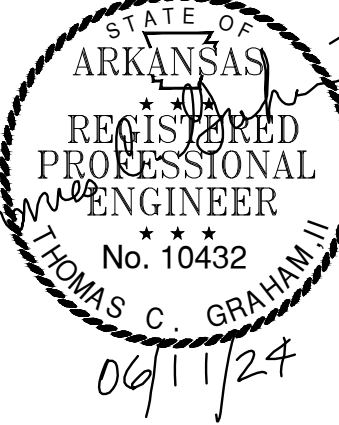
GARVER PROJECT NO.: 2302643  
 NLRE WORK ORDER NO.: 2024-01  
 ISSUE DATE: JUNE 2024



Garver, LLC  
 4701 Northshore Drive  
 North Little Rock, AR 72118  
 501-376-3633  
 www.GarverUSA.com



© 2024 GARVER, LLC  
 THIS DOCUMENT, ALONG WITH THE  
 IDEAS AND DESIGNS CONVEYED  
 HEREIN, SHALL BE CONSIDERED  
 INSTRUMENTS OF PROFESSIONAL  
 SERVICE AND ARE PROPERTY OF  
 GARVER, LLC. ANY USE,  
 REPRODUCTION, OR DISTRIBUTION  
 OF THIS DOCUMENT, ALONG WITH  
 THE IDEAS AND DESIGN  
 CONTAINED HEREIN, IS PROHIBITED  
 UNLESS AUTHORIZED IN WRITING  
 BY GARVER, LLC OR EXPLICITLY  
 ALLOWED IN THE GOVERNING  
 PROFESSIONAL SERVICES  
 AGREEMENT FOR THIS WORK.



BY	DESCRIPTION	DATE	REV.

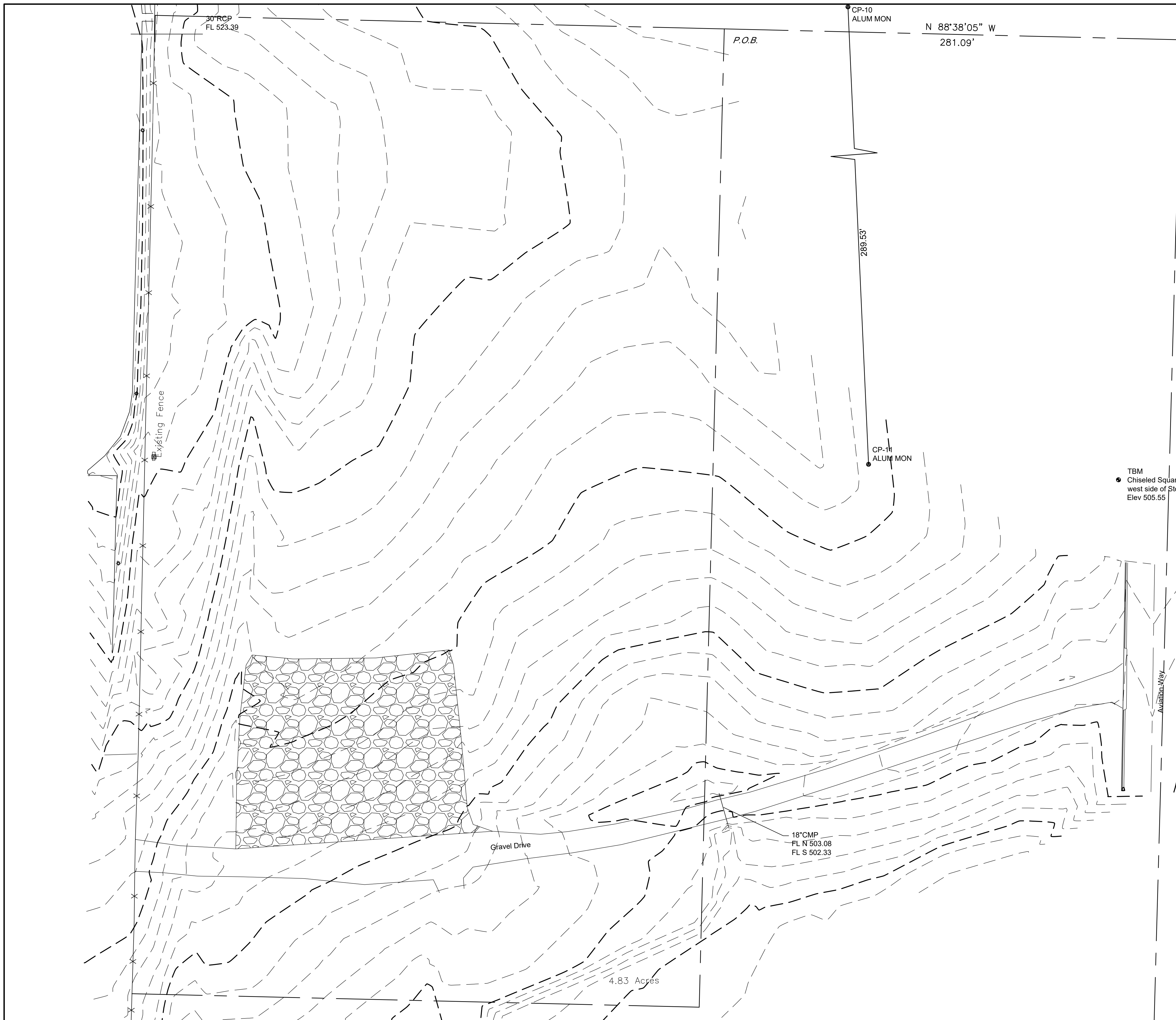
NORTH LITTLE ROCK ELECTRIC  
 NORTH LITTLE ROCK AIRPORT  
 NORTH LITTLE ROCK, ARKANSAS 72118  
 CANOPIES

COVER SHEET

JOB NO.: 2302643  
 DATE: 2024.06.11  
 DESIGNED BY: TCG  
 DRAWN BY: TDB

BAR IS ONE INCH ON ORIGINAL DRAWING  
 0 1"  
 IF NOT ONE INCH ON THIS SHEET, ADJUST SCALES ACCORDINGLY.

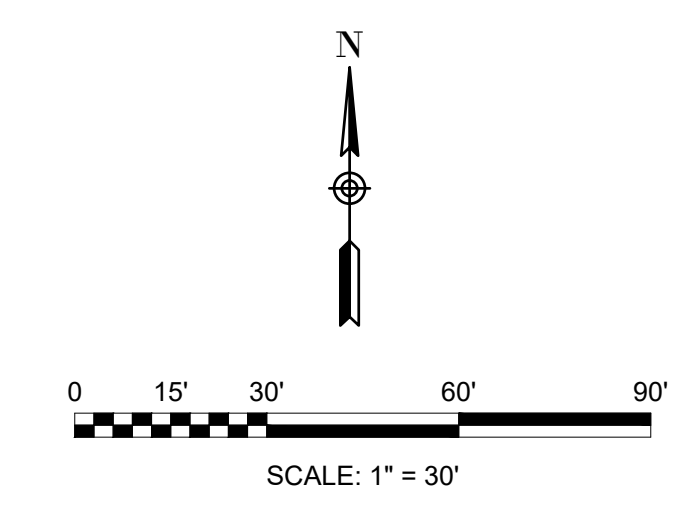
DRAWING NUMBER  
**G-001**



- ### GENERAL SURVEY NOTES
1. NORTH AND THE SURVEY DATUM SHOWN HEREON IS BASED ON NORTH LITTLE ROCK AIRPORT CONTROL, ROCKPORT AND ROCKPORT AZIMUTH IN THE ARKANSAS STATE PLANE COORDINATE SYSTEM (N.A.D.83 - ARKANSAS NORTH) AND DRAWINGS PROVIDED BY GARVER. ELEVATION DERIVED BY GPS IN NAVD 88 USING GEI0D 18.
  2. THE ORIGINAL TOPOGRAPHIC SURVEY WAS PERFORMED BY GARVER IN MARCH 2024. THE LIMITS OF THE SURVEY ARE SHOWN IN THIS PLAN.
  3. UTILITIES SHOWN HEREON ARE BASED ON SURVEY DATA SHOT BY GARVER.

© 2024 GARVER, LLC  
 THIS DOCUMENT, ALONG WITH THE IDEAS AND DESIGNS CONVEYED HEREIN, SHALL BE CONSIDERED INSTRUMENTS OF PROFESSIONAL SERVICE AND ARE PROPERTY OF GARVER, LLC. ANY USE, REPRODUCTION, OR DISTRIBUTION OF THIS DOCUMENT, ALONG WITH THE IDEAS AND DESIGN CONTAINED HEREIN, IS PROHIBITED UNLESS AUTHORIZED IN WRITING BY GARVER, LLC OR EXPLICITLY ALLOWED IN THE GOVERNING PROFESSIONAL SERVICES AGREEMENT FOR THIS WORK.

SURVEY CONTROL POINTS				
POINT NO.	NORTHING	EASTING	ELEV	DESCRIPTION
10	184460.47	1237017.49	520.13	ALUM. MON.
11	184171.23	1237030.52	517.10	ALUM. MON.



FOR INFORMATION ONLY

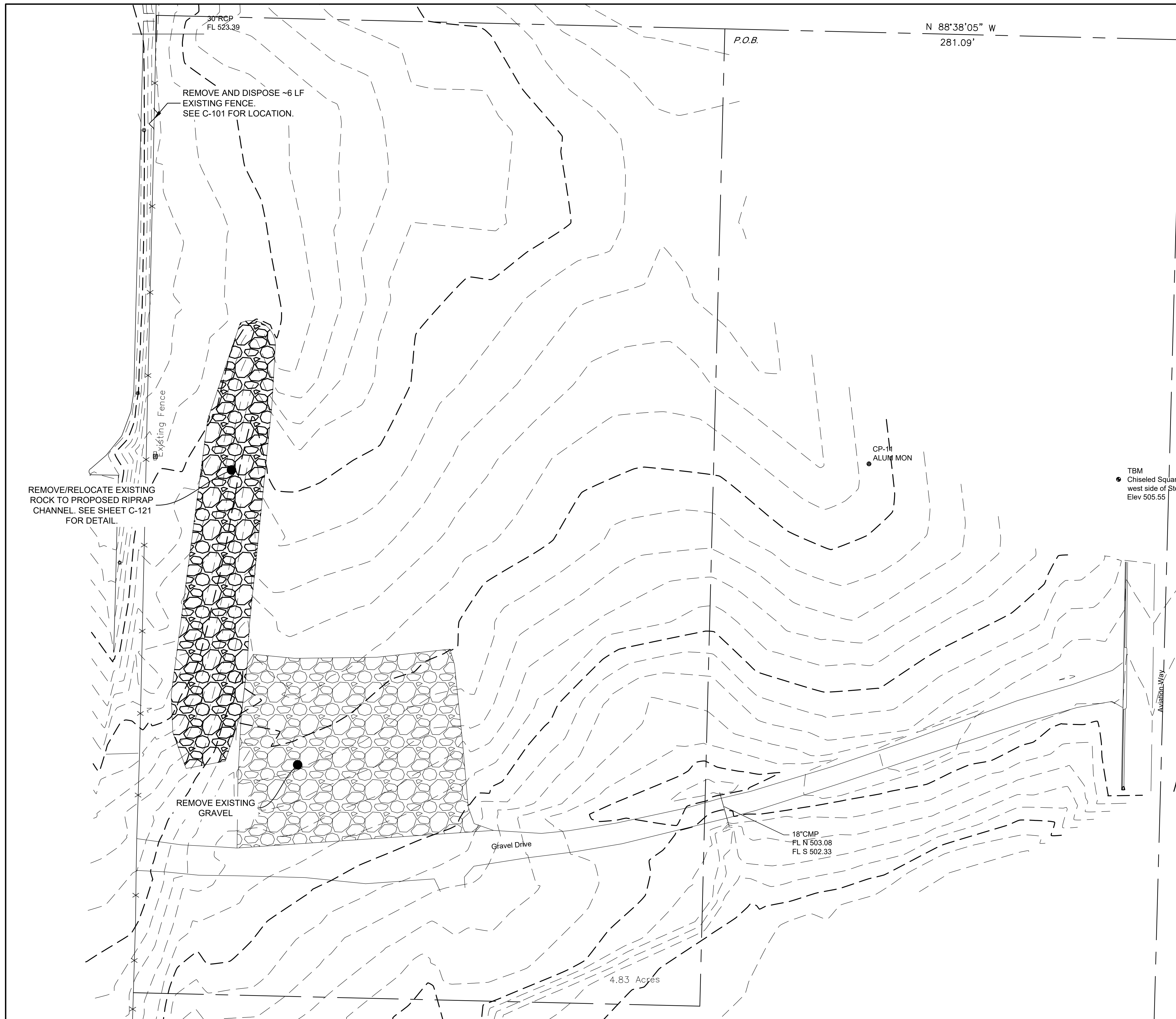
REV.	DATE	DESCRIPTION	BY

NORTH LITTLE ROCK ELECTRIC  
 NORTH LITTLE ROCK AIRPORT  
 NORTH LITTLE ROCK, ARKANSAS 72118  
 CANOPIES

EXISTING CONDITIONS  
 PLAN

JOB NO.: 2302643  
 DATE: 2024.06.11  
 DESIGNED BY: TCG  
 DRAWN BY: TDB

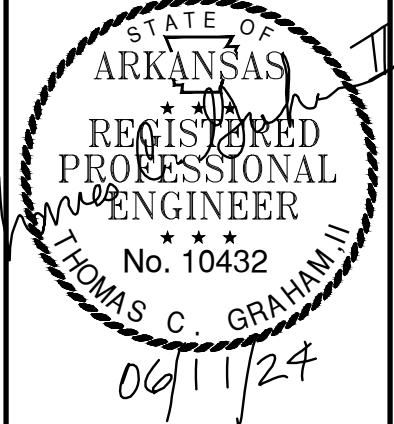
BAR IS ONE INCH ON ORIGINAL DRAWING  
 IF NOT ONE INCH ON THIS SHEET, ADJUST SCALES ACCORDINGLY.  
 DRAWING NUMBER  
**C-001**



- GENERAL DEMOLITION NOTES**
1. CAUTION: UNDERGROUND UTILITIES LIE WITHIN AND ADJACENT TO THE LIMITS OF CONSTRUCTION. AN ATTEMPT HAS BEEN MADE TO LOCATE THESE UTILITIES ON THE PLANS, HOWEVER ALL EXISTING UTILITIES MAY NOT BE SHOWN AND THE ACTUAL LOCATIONS OF THE UTILITIES MAY VARY FROM LOCATIONS SHOWN. PRIOR TO BEGINNING ANY TYPE OF EXCAVATION, THE CONTRACTOR SHALL MARK THE VISIBLE UTILITIES & THE UTILITIES SHOWN ON THE PLANS IN THE FIELD. THE CONTRACTOR SHALL MAINTAIN THE UTILITY LOCATION MARKING UNTIL THEY ARE NO LONGER NECESSARY. USE EXTREME CAUTION WHEN EXCAVATING.
  2. THE CONTRACTOR IS RESPONSIBLE FOR THE APPROPRIATE BARRICADES AND SAFETY PRECAUTIONS IN ALL EXCAVATED AREAS. EXCAVATED AREAS SHALL BE ADEQUATELY FILLED OR COVERED BY THE CONTRACTOR BEFORE LEAVING THE JOBSITE EACH DAY.
  3. CONTRACTOR IS RESPONSIBLE FOR ANY DAMAGE CAUSED TO EXISTING STRUCTURES, PAVEMENTS, AND UTILITIES.
  4. CONTRACTOR SHALL PROVIDE TEMPORARY ACCESS TO THE SITE DURING CONSTRUCTION.
  5. THE CONTRACTOR SHALL MAINTAIN THE SITE IN AN ORDERLY AND CLEAN FASHION.
  6. ALL WASTE MATERIALS GENERATED FROM CONSTRUCTION BECOME THE PROPERTY OF THE CONTRACTOR (UNLESS OTHERWISE NOTED ON THE PLANS). THE CONTRACTOR SHALL REMOVE THE WASTE MATERIALS FROM THE SITE AND DISPOSE OF IN A LEGAL MANNER.
  7. CONTRACTOR SHALL COORDINATE WITH NORTH LITTLE ROCK ELECTRIC FOR WORK ON ALL UTILITIES PRIOR TO DEMOLITION/RENOVATION. THESE UTILITIES SHALL INCLUDE (BUT ARE NOT LIMITED TO) WATER, NATURAL GAS, ELECTRIC, SANITARY SEWER, AND COMMUNICATIONS LINES. PROVIDE NOTICE TO THE OWNER PRIOR TO ANY DISRUPTION IN SERVICE.
  8. CONTRACTOR SHALL SAWCUT ALL PAVEMENTS OR SIDEWALKS TO BE REMOVED IN A NEAT AND ORDERLY MANNER PRIOR TO DEMOLITION.



© 2024 GARVER, LLC  
 THIS DOCUMENT, ALONG WITH THE IDEAS AND DESIGNS CONVEYED HEREIN, SHALL BE CONSIDERED INSTRUMENTS OF PROFESSIONAL SERVICE AND ARE PROPERTY OF GARVER, LLC. ANY USE, REPRODUCTION, OR DISTRIBUTION OF THIS DOCUMENT, ALONG WITH THE IDEAS AND DESIGN CONTAINED HEREIN, IS PROHIBITED UNLESS AUTHORIZED IN WRITING BY GARVER, LLC OR EXPLICITLY ALLOWED IN THE GOVERNING PROFESSIONAL SERVICES AGREEMENT FOR THIS WORK.

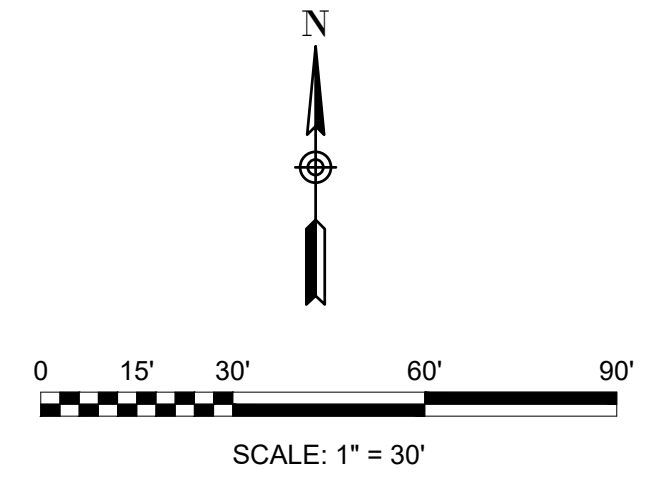


REV.	DATE	DESCRIPTION	BY

**NORTH LITTLE ROCK ELECTRIC**  
 NORTH LITTLE ROCK AIRPORT  
 NORTH LITTLE ROCK, ARKANSAS 72118  
**CANOPIES**

**DEMOLITION PLAN**

JOB NO.: 2302643  
 DATE: 2024.06.11  
 DESIGNED BY: TCG  
 DRAWN BY: TDB  
 BAR IS ONE INCH ON ORIGINAL DRAWING  
 IF NOT ONE INCH ON THIS SHEET, ADJUST SCALES ACCORDINGLY.  
**DRAWING NUMBER**  
**C-010**



4.83 Acres



30" RCP  
FL 523.39

CP-10  
ALUM MON

289.53'

CP-11  
ALUM MON

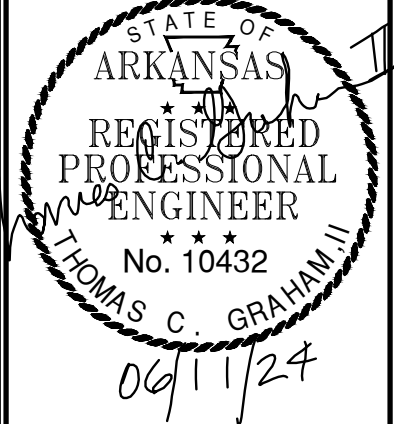
18" CMP  
FL N 503.08  
FL S 502.33

COORDINATES		
No.	NORTHING	EASTING
101	184,386.15	1,236,626.07
102	184,016.26	1,236,617.24
103	184,015.64	1,236,643.23
104	183,960.45	1,236,641.92
105	184,013.25	1,236,743.21
106	183,966.84	1,236,742.10
107	184,009.93	1,236,882.17
108	184,323.62	1,236,679.60
109	184,073.70	1,236,673.63
110	184,320.88	1,236,794.56
111	184,070.95	1,236,788.60
112	184,359.83	1,236,890.52
113	184,029.92	1,236,882.64
114	183,966.24	1,236,767.09
115	183,961.05	1,236,616.92
116	183,946.15	1,236,622.32
117	183,912.99	1,236,621.78
118	184,375.03	1,236,684.10
119	184,029.45	1,236,902.64
120	184,359.35	1,236,910.52
121	184,379.82	1,236,891.00
122	184,387.00	1,236,590.30
123	184,381.01	1,236,590.16
124	184,386.85	1,236,596.59
125	184,380.86	1,236,596.45
126	184,380.15	1,236,625.93
127	184,380.43	1,236,614.24
128	184,386.43	1,236,614.39

- GENERAL SITE NOTES**
- CAUTION: UNDERGROUND UTILITIES LIE WITHIN AND ADJACENT TO THE LIMITS OF CONSTRUCTION. AN ATTEMPT HAS BEEN MADE TO LOCATE THESE UTILITIES ON THE PLANS. HOWEVER ALL EXISTING UTILITIES MAY NOT BE SHOWN AND THE ACTUAL LOCATIONS OF THE UTILITIES MAY VARY FROM LOCATIONS SHOWN. PRIOR TO BEGINNING ANY TYPE OF EXCAVATION, THE CONTRACTOR SHALL MARK THE VISIBLE UTILITIES & THE UTILITIES SHOWN ON THE PLANS IN THE FIELD. THE CONTRACTOR SHALL MAINTAIN THE UTILITY LOCATION MARKING UNTIL THEY ARE NO LONGER NECESSARY.
  - DIMENSIONS ARE GIVEN TO BACK OF CURB, CENTER OF STRIPE, FACE OF BUILDING, EDGE OF PAVEMENT, OR PROPERTY LINE, UNLESS OTHERWISE NOTED.
  - COORDINATES GIVEN FOR RADII ARE FROM THE CENTER OF THE RADIUS.
  - THE CONTRACTOR IS RESPONSIBLE FOR THE APPROPRIATE BARRICADES AND SAFETY PRECAUTIONS IN ALL EXCAVATED AREAS. EXCAVATED AREAS SHALL BE ADEQUATELY FILLED OR COVERED BY THE CONTRACTOR BEFORE LEAVING THE JOBSITE EACH DAY.
  - CONTRACTOR IS RESPONSIBLE FOR ANY DAMAGE CAUSED TO EXISTING STRUCTURES, PAVEMENTS, AND UTILITIES.
  - CONTRACTOR SHALL PROVIDE TEMPORARY ACCESS TO THE SITE DURING CONSTRUCTION.
  - THE CONTRACTOR SHALL MAINTAIN THE SITE IN AN ORDERLY AND CLEAN FASHION.
  - ALL WASTE MATERIALS GENERATED FROM CONSTRUCTION BECOME THE PROPERTY OF THE CONTRACTOR. THE CONTRACTOR SHALL REMOVE THE WASTE MATERIALS FROM THE SITE AND DISPOSE OF IN A LEGAL MANNER.
  - ITEMS LABELED AS "PROPOSED" OR "INSTALL" SHALL BE CONSTRUCTED AS INDICATED IN THE CONSTRUCTION DOCUMENTS AS PART OF THIS PROJECT.
  - SEE SHEETS C-131 FOR CIVIL DETAILS.



© 2024 GARVER, LLC  
THIS DOCUMENT, ALONG WITH THE IDEAS AND DESIGNS CONVEYED HEREIN, SHALL BE CONSIDERED INSTRUMENTS OF PROFESSIONAL SERVICE AND ARE PROPERTY OF GARVER, LLC. ANY USE, REPRODUCTION, OR DISTRIBUTION OF THIS DOCUMENT, ALONG WITH THE IDEAS AND DESIGN CONTAINED HEREIN, IS PROHIBITED UNLESS AUTHORIZED IN WRITING BY GARVER, LLC OR EXPLICITLY ALLOWED IN THE GOVERNING PROFESSIONAL SERVICES AGREEMENT FOR THIS WORK.



REV.	DATE	DESCRIPTION	BY

**NORTH LITTLE ROCK ELECTRIC**  
NORTH LITTLE ROCK AIRPORT  
NORTH LITTLE ROCK, ARKANSAS 72118  
**CANOPIES**

**SITE PLAN**

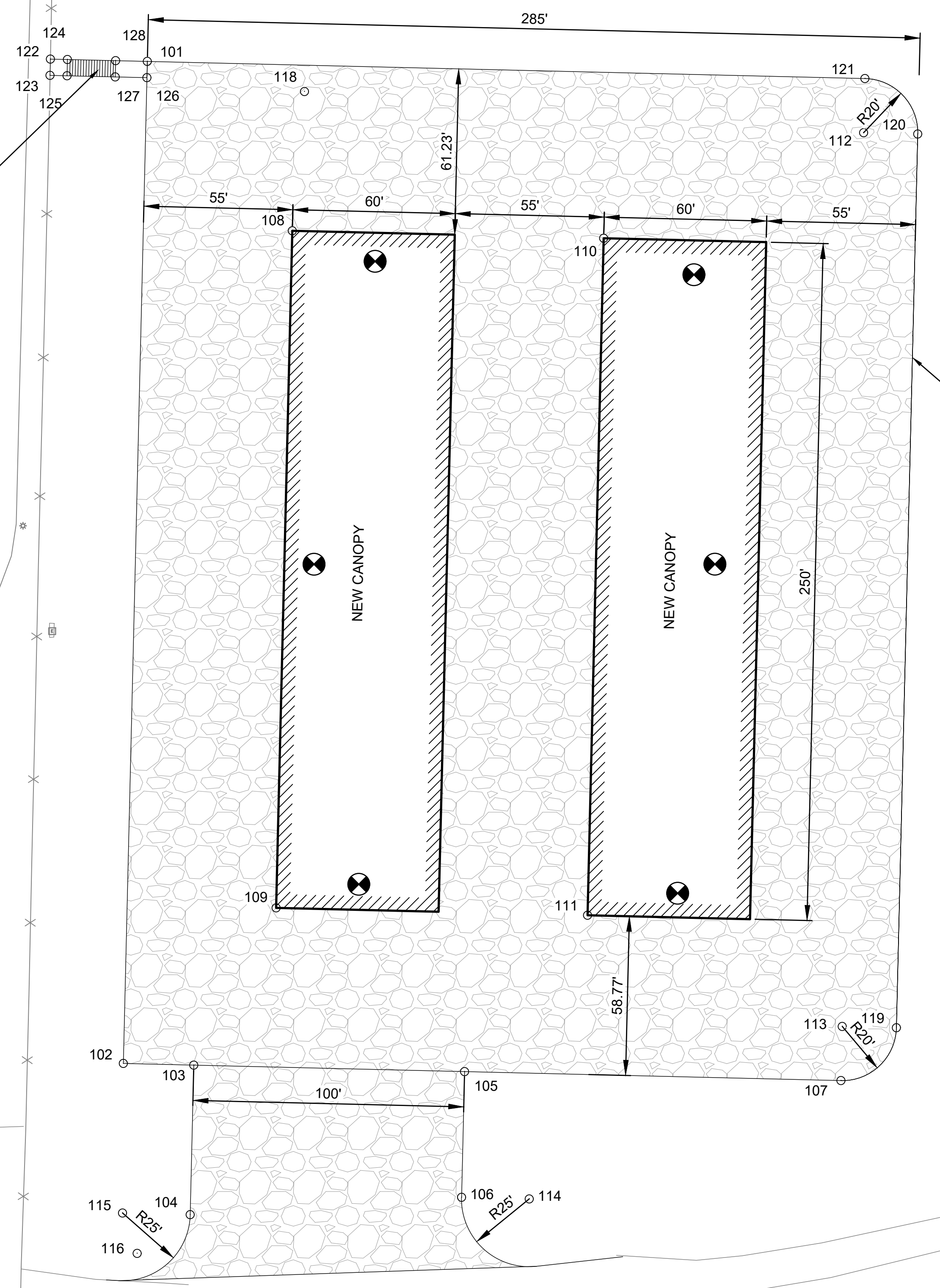
JOB NO.: 2302643  
DATE: 2024.06.11  
DESIGNED BY: TCG  
DRAWN BY: TDB

BAR IS ONE INCH ON ORIGINAL DRAWING  
IF NOT ONE INCH ON THIS SHEET, ADJUST SCALES ACCORDINGLY.

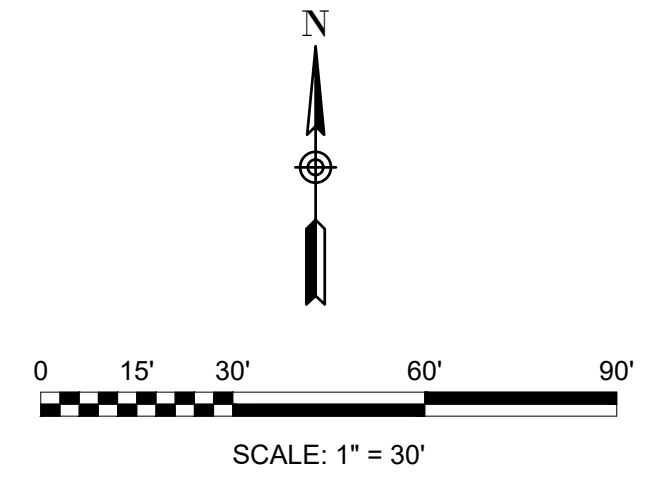
**DRAWING NUMBER**  
**C-101**

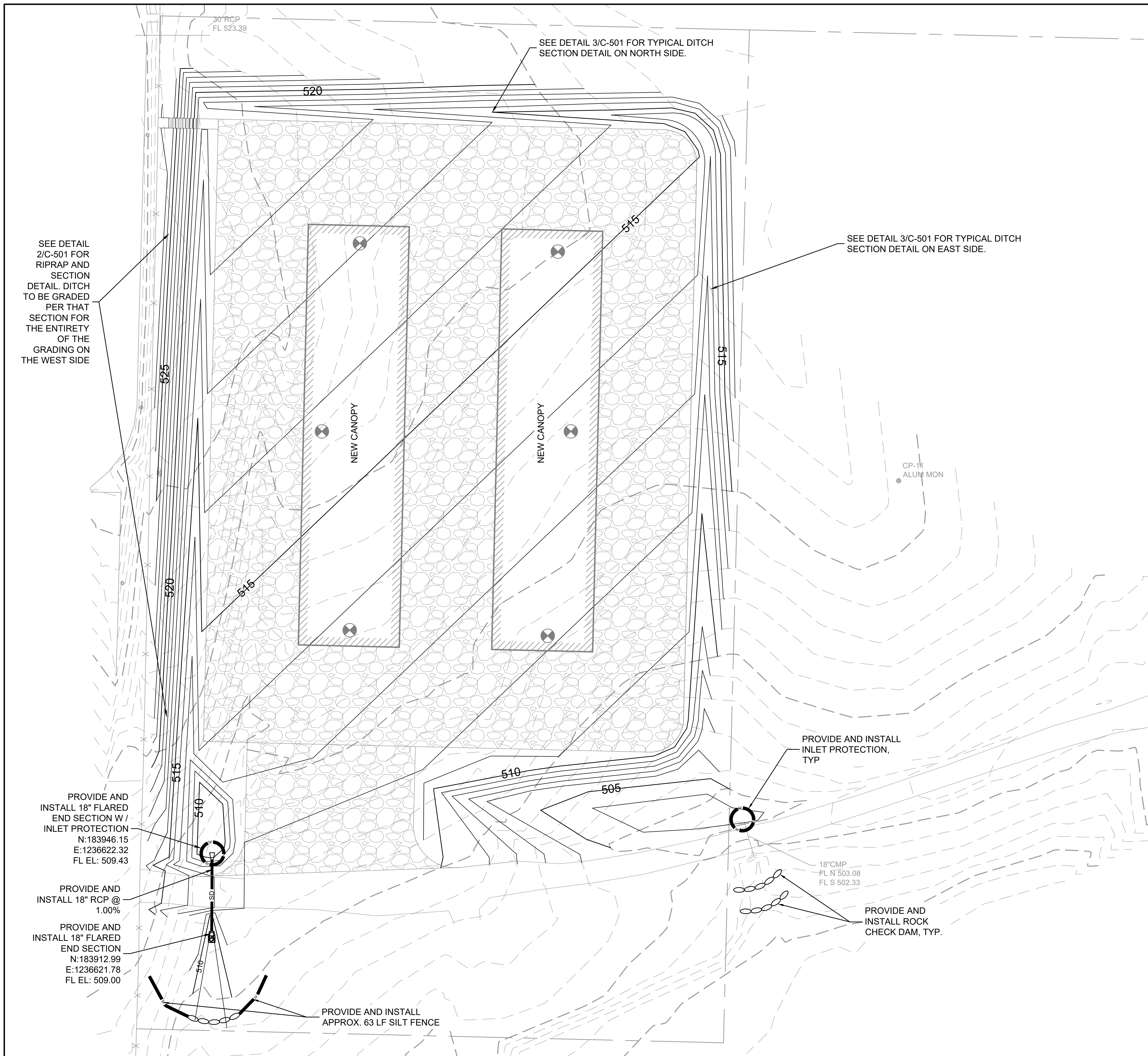
PROVIDE AND INSTALL CONCRETE SIDEWALK AND 17 STAIRS. SEE GRADING SHEET C-121 AND STAIR DETAIL FOR MORE INFORMATION.

PROVIDE AND INSTALL GRAVEL PAVEMENT



SURVEY CONTROL POINTS				
POINT NO.	NORTHING	EASTING	ELEV	DESCRIPTION
10	184460.47	1237017.49	520.13	ALUM. MON.
11	184171.23	1237030.52	517.10	ALUM. MON.



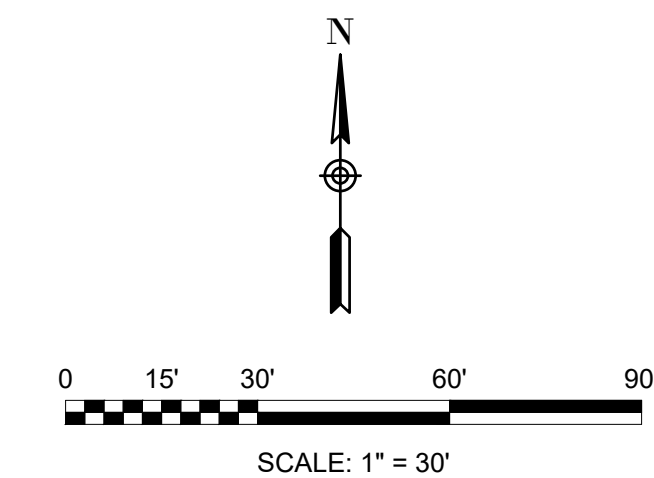


**GENERAL GRADING NOTES**

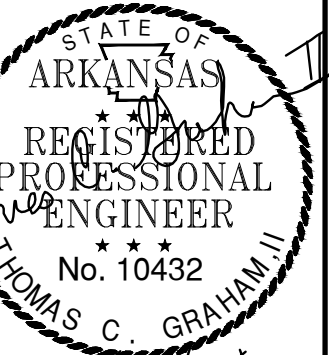
1. THE CONTRACTOR IS RESPONSIBLE FOR ADEQUATE EROSION CONTROL MEASURES. THESE MEASURES WILL SATISFY THE REQUIREMENTS OF ADEQ. EROSION CONTROL DEVICES WILL BE MAINTAINED UNTIL PERMANENT GROUND COVER IS ESTABLISHED.
2. SEED, FERTILIZE AND MULCH AREAS DISTURBED BY CONSTRUCTION (EXCEPT AREAS TO BE PAVED). USE BERMUDA SEEDING.
3. CONTRACTOR SHALL EMPLOY A QUALIFIED MATERIALS TESTING LABORATORY, ACCEPTABLE TO THE ENGINEER, TO PROVIDE TESTING SERVICES DURING CONSTRUCTION. TEST RESULTS SHALL BE PROMPTLY SENT TO THE OWNER/ENGINEER.
4. CONTRACTOR SHALL MAINTAIN BENCHMARKS ON SITE UNTIL THE END OF CONSTRUCTION.
5. IT IS INCUMBENT UPON THE CONTRACTOR TO FIELD VERIFY THE EXISTING CONDITIONS PRIOR TO BEGINNING CONSTRUCTION. A TOPOGRAPHIC SURVEY INCLUDING UTILITY ROUTES AND TIE-INS, PAVEMENTS, STRUCTURES, AND GRADES SHALL BE CONDUCTED BY THE CONTRACTOR. SHOULD SIGNIFICANT DISCREPANCIES BE FOUND, IMMEDIATELY NOTIFY THE CONTRACTING OFFICER AND ENGINEER OF RECORD.
6. THE CONTRACTOR IS RESPONSIBLE FOR OBTAINING ALL GRADING RELATED PERMITS PRIOR TO BEGINNING EARTHWORK.
7. SITE FILL SHALL BE COMPLETED IN ACCORDANCE WITH THE GEOTECHNICAL REPORT.
8. EXISTING TOPSOIL SHALL BE STRIPPED TO A MINIMUM OF 6" AND STOCKPILED ON SITE. UTILIZE EXISTING TOPSOIL ON COMPLETED VEGETATED SLOPES.

**EROSION CONTROL NOTES**

1. AREA DISTURBED BY IMPROVEMENTS IS APPROXIMATELY 4.47 ACRES.
2. GRADING FOR THIS PHASE WILL BE PERFORMED IN ONE CONTINUOUS OPERATION.
3. EROSION AND SEDIMENT CONTROL MEASURES SHALL BE INSTALLED BY THE CONTRACTOR UPON DISTURBANCE OF THE LAND. THESE MATTERS WILL SATISFY THE REQUIREMENTS OF ADEQ AND SHALL INCLUDE AT A MINIMUM:
  - A. ON DISTURBED SLOPES LEFT OPEN AND UNMAINTAINED FOR A PERIOD OF MORE THAN TWO (2) WEEKS, COVER WITH HAY (TACKED, ANCHORED, OR TIES) AT THE RATE OF 1.5 TONS PER ACRE.
  - B. IN THE OCCASION THAT WIND EROSION BECOMES EVIDENT, THE CONTRACTOR SHALL SPRINKLE THE CONSTRUCTION SITE WITH WATER TO CONTROL DUST.
  - C. CONTRACTOR SHALL KEEP VEHICLE TRACKING OF SEDIMENT TO A MINIMUM AND SHALL CLEAR HAUL ROUTES IF TRACKING BECOMES EXCESSIVE AS DETERMINED BY THE LOCAL GOVERNMENT OR PROJECT REPRESENTATIVE.
5. PERMANENT VEGETATION COVER WILL BE INSTALLED BY THE CONTRACTOR. COVER WILL BE:
  - A. ON ALL DISTURBED AREAS TO BE PAVED, BERMUDA SEEDING SHALL BE PLACED.
  - B. CONSTRUCTION MEASURES FOR SEDIMENT AND EROSION CONTROL WILL BE MAINTAINED UNTIL PERMANENT COVER IS ESTABLISHED.
6. OWNER: NORTH LITTLE ROCK ELECTRIC
7. ANTICIPATED PROJECT SCHEDULE IS FOR CONSTRUCTION TO BEGIN AFTER RECEIPT OF REGULATORY APPROVALS. INSTALLATION OF PERMANENT VEGETATION COVER WILL BEGIN IMMEDIATELY UPON COMPLETION OF CONSTRUCTION ACTIVITIES.
8. CONTRACTOR TO PREPARE AND SUBMIT STORM WATER POLLUTION PREVENTION PLAN (SWPPP). SUBMIT SWPPP TO A.D.E.Q. AND OBTAIN PERMIT PRIOR TO EARTH MOVING OPERATIONS.



© 2024 GARVER, LLC  
THIS DOCUMENT, ALONG WITH THE IDEAS AND DESIGNS CONVEYED HEREIN, SHALL BE CONSIDERED INSTRUMENTS OF PROFESSIONAL SERVICE AND ARE PROPERTY OF GARVER, LLC. ANY USE, REPRODUCTION, OR DISTRIBUTION OF THIS DOCUMENT, ALONG WITH THE IDEAS AND DESIGN CONTAINED HEREIN, IS PROHIBITED UNLESS AUTHORIZED IN WRITING BY GARVER, LLC OR EXPLICITLY ALLOWED IN THE GOVERNING PROFESSIONAL SERVICES AGREEMENT FOR THIS WORK.



09/1/24

REV.	DATE	DESCRIPTION	BY

**NORTH LITTLE ROCK ELECTRIC**  
NORTH LITTLE ROCK AIRPORT  
NORTH LITTLE ROCK, ARKANSAS 72118

**CANOPIES**

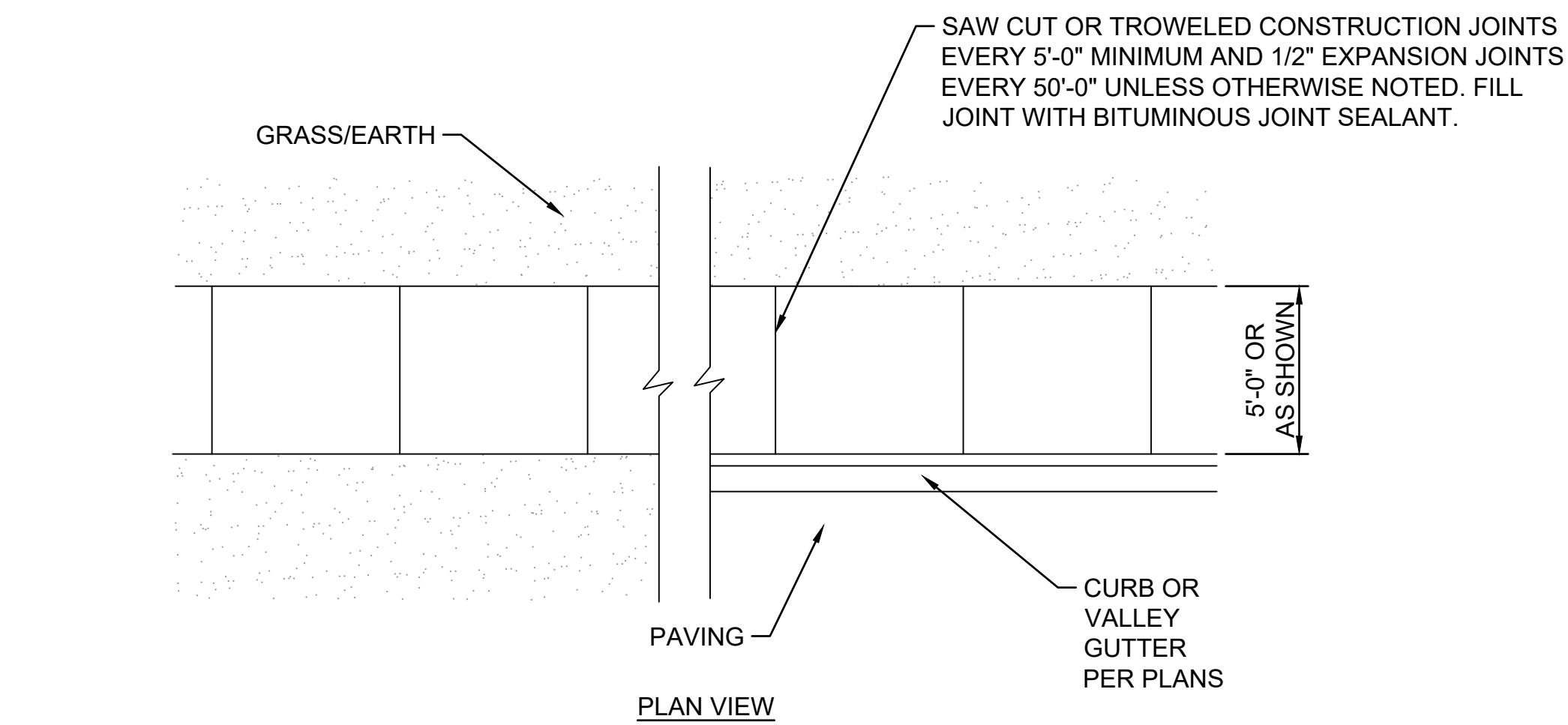
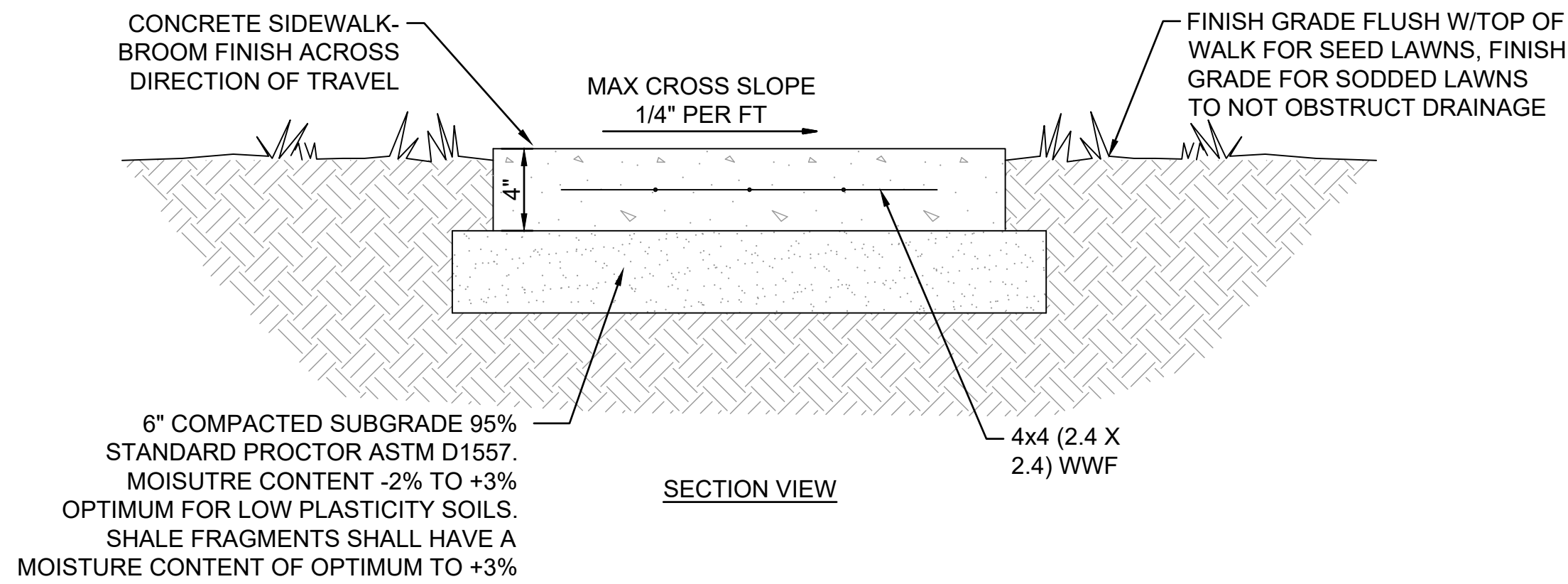
**GRADING & EROSION CONTROL PLAN**

JOB NO.: 2302643  
DATE: 2024.06.11  
DESIGNED BY: TCG  
DRAWN BY: TDB

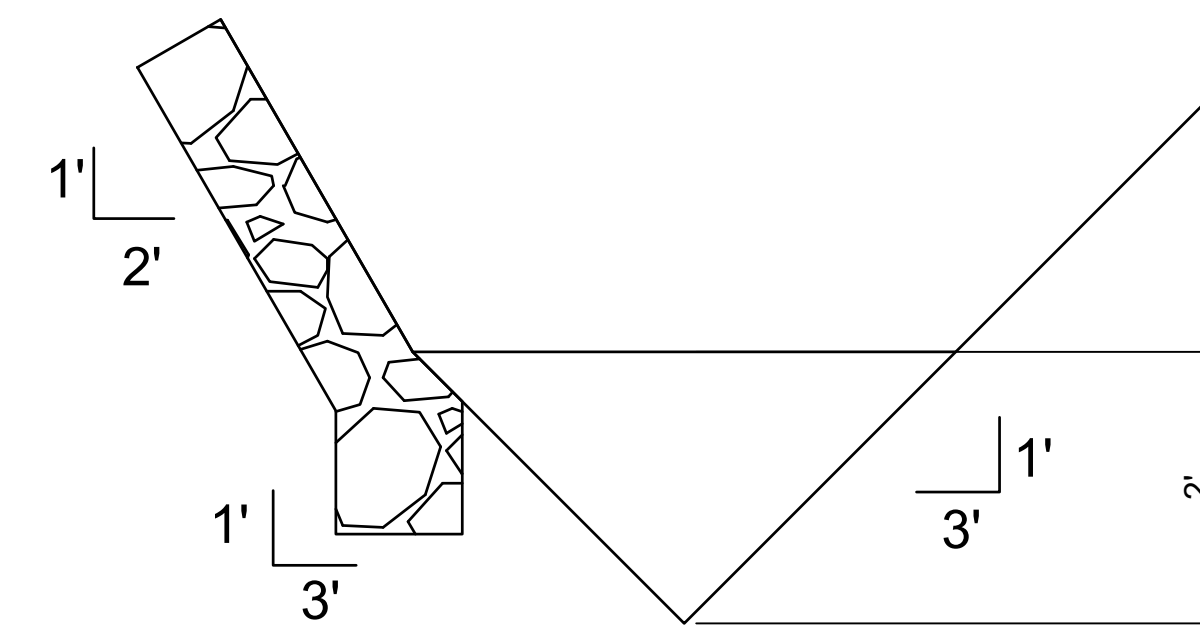
BAR IS ONE INCH ON ORIGINAL DRAWING  
IF NOT ONE INCH ON THIS SHEET, ADJUST SCALES ACCORDINGLY.

DRAWING NUMBER  
**C-121**





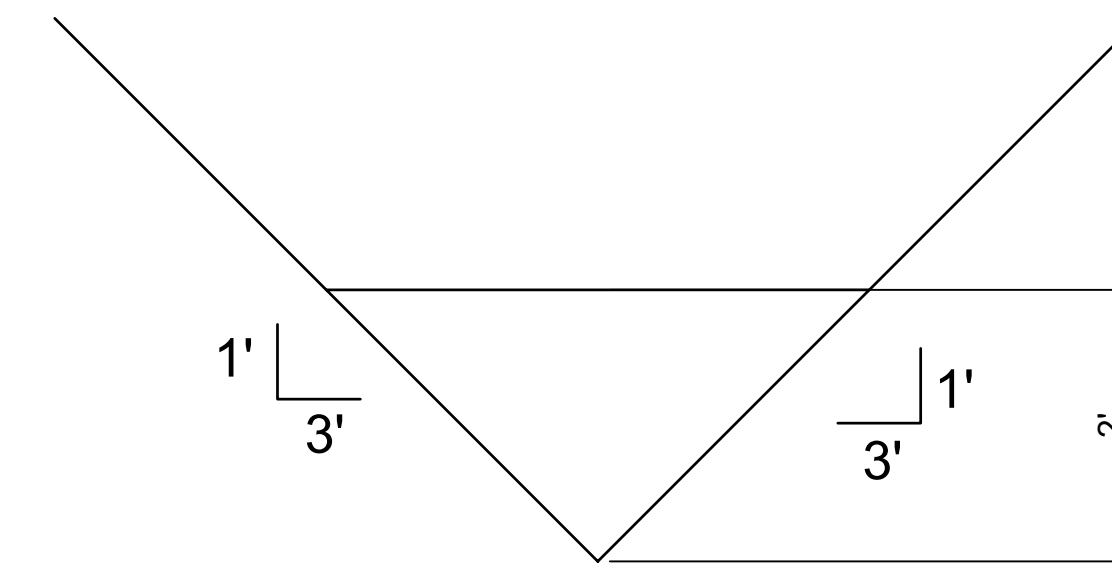
1 TYPICAL CONCRETE SIDEWALK DETAIL  
SCALE: NONE



SEE NOTE FOR GRADING ON THE WEST SIDE.

NOTE: DITCH HAS A 3:1 CROSS SLOPE FOR THE BOTTOM 2' OF THE CHANNEL, AND A 2:1 CROSS SLOPE FOR ALL ELEVATIONS OVER 2'. THIS SIDE SHALL HAVE 1' MINIMUM RIPRAP THICKNESS ALONG THE 2:1 SLOPE.

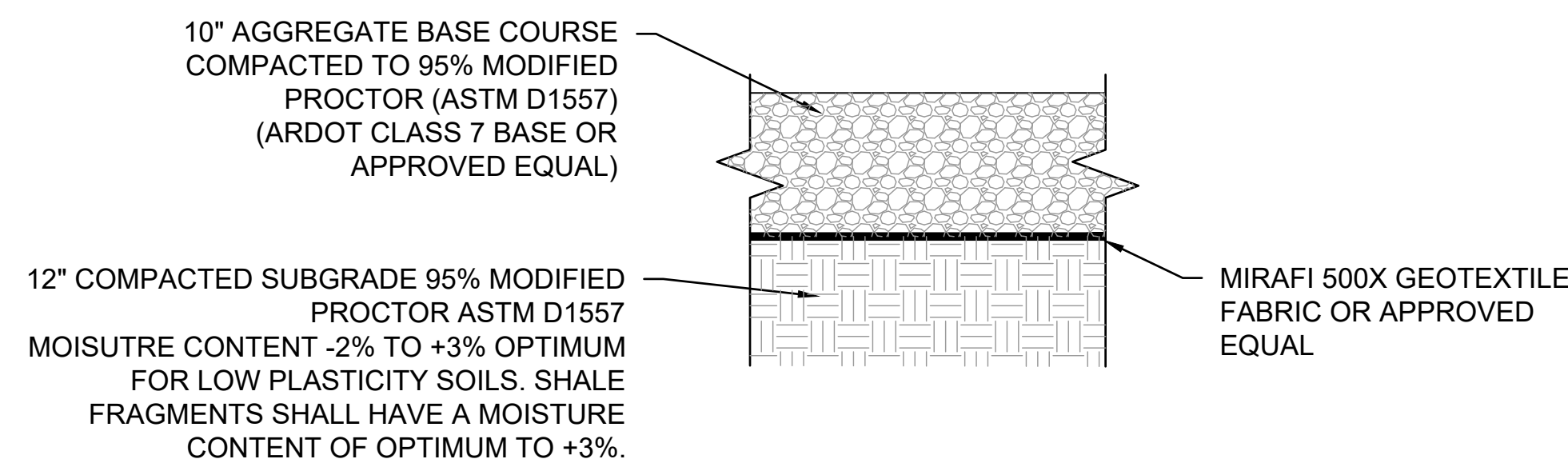
2 TYPICAL DITCH SECTION - WEST  
SCALE: NONE



SEE NOTE FOR GRADING ON THE WEST SIDE.

NOTE: DITCH HAS A 3:1 CROSS SLOPE FOR THE BOTTOM 2' OF THE CHANNEL, AND A 2:1 CROSS SLOPE FOR ALL ELEVATIONS OVER 2'. THIS SIDE SHALL HAVE 1' MINIMUM RIPRAP THICKNESS ALONG THE 2:1 SLOPE.

3 TYPICAL DITCH SECTION - NORTH AND EAST  
SCALE: NONE

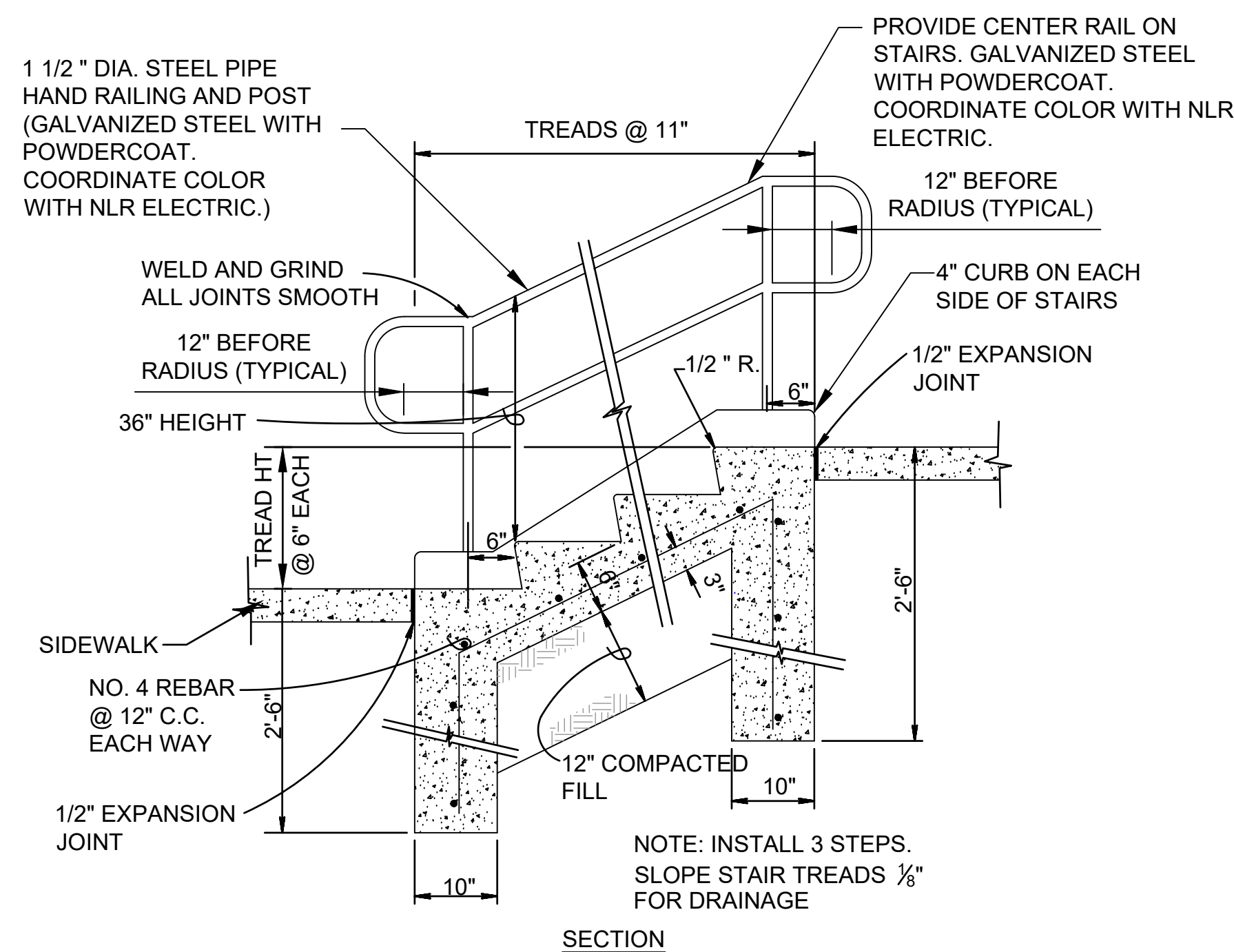


4 TYPICAL GRAVEL PAVEMENT SECTION  
SCALE: NONE

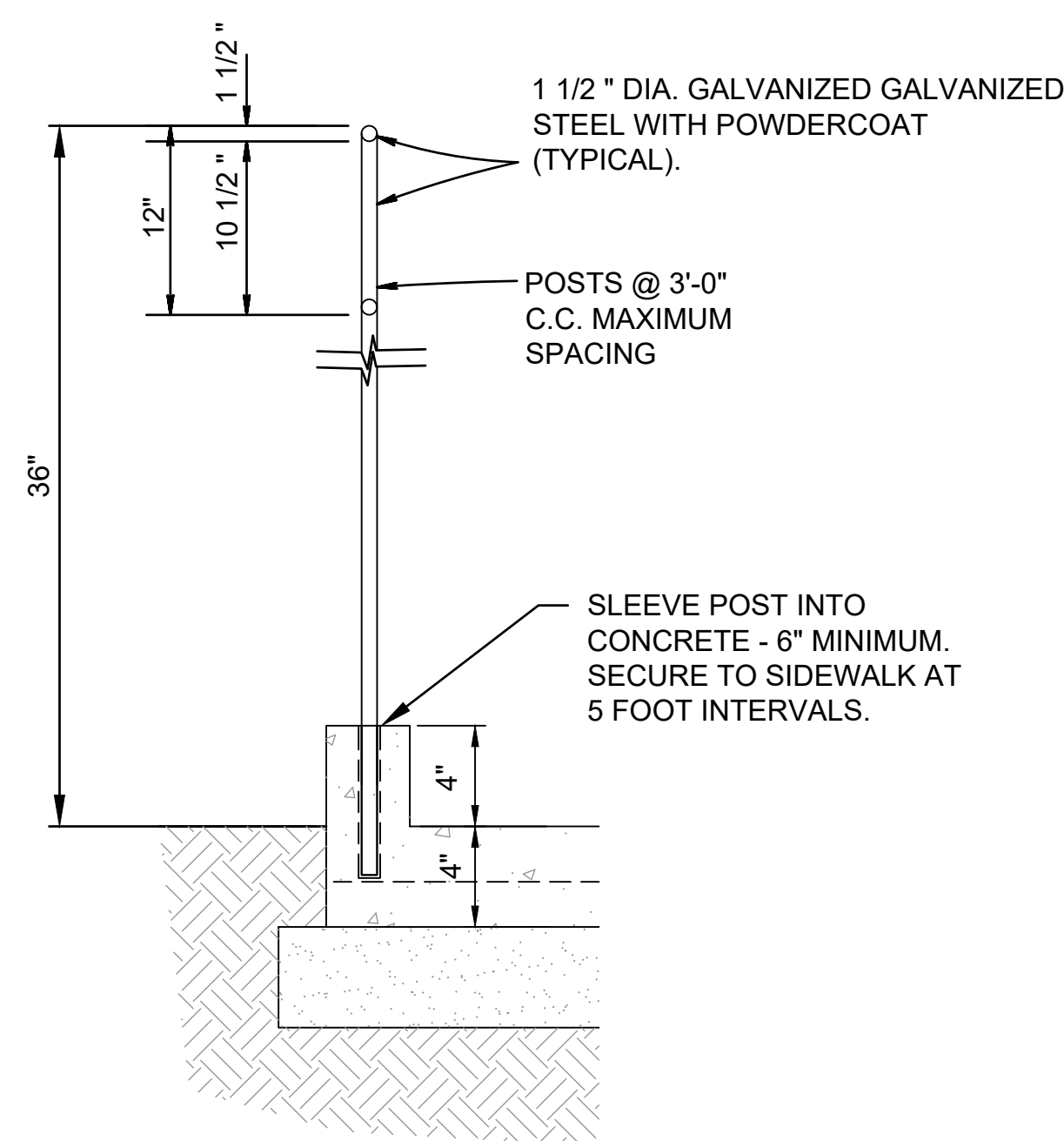
EARTHWORK NOTES FROM GEOTECHNICAL REPORT

1. THE ON-SITE SOILS ARE NOT RECOMMENDED FOR USE AS FILL OR BACKFILL IN PAVEMENT AREAS. THESE SOILS MAY, HOWEVER, BE UTILIZED AS GENERAL FILL IN LANDSCAPE AREAS OUTSIDE OF STRUCTURE AND PAVEMENT SUBGRADE AREAS. THE MOISTURE-SENSITIVE CHARACTERISTICS OF THE ON-SITE SOILS WILL MAKE THESE DIFFICULT TO USE FOR FILL AND BACKFILL.
2. IMPORTED BORROW FOR USE AS SELECT FILL OR BACKFILL MAY CONSIST OF AN APPROVED SILTY CLAY/SHALE FRAGMENT BLEND OR LOW-PLASTICITY CLAYEY SAND (SC), SANDY CLAY (CL), OR CLAYEY GRAVEL (GC) WITH A LIQUID LIMIT LESS THAN 40 AND A MAXIMUM PLASTICITY INDEX (PI) OF 18 OR AN APPROVED ALTERNATE. ALL FILL SHOULD BE FREE OF ORGANICS AND DURABLE ROCK FRAGMENTS IN EXCESS OF ABOUT 3-IN. DIMENSION. THE TOP 18 INCHES OF FILL SHOULD HAVE A MAXIMUM PARTICLE DIMENSION LIMITED TO 1.5 INCHES. ALL FILL AND BACKFILL SHOULD BE APPROVED BY THE GEOTECHNICAL ENGINEER.
3. FILL, BACKFILL, AND RECOMPACTED SOILS SHOULD BE COMPACTED TO A MINIMUM OF 95 PERCENT OF THE MODIFIED PROCTOR (ASTM D1557) MAXIMUM DRY DENSITY. LOW-PLASTICITY SOILS (CLAYEY SAND, SANDY CLAY, OR CLAYEY GRAVEL) SHOULD BE COMPACTED WITHIN A WATER CONTENT RANGE OF 2 PERCENT BELOW TO 3 PERCENT ABOVE THE OPTIMUM VALUE. SHALE FRAGMENT BLENDS SHOULD BE WATERED AS NECESSARY TO OBTAIN A WATER CONTENT RANGING FROM OPTIMUM TO 3 PERCENT ABOVE OPTIMUM DURING COMPACTION. IF A SILTY CLAY-SHALE FRAGMENT BLEND FILL IS USED, PARTICULAR ATTENTION SHOULD BE GIVEN TO COMPACTION AND PLACEMENT PROCEDURES.
4. FILL AND BACKFILL SHOULD BE PLACED IN HORIZONTAL, NOMINAL 6- TO 8-IN.-THICK LOOSE LIFTS. FILLS PLACED AGAINST EXISTING SLOPES SHOULD BE BENCHED INTO THE EXISTING SLOPE FACE AS THE NEW FILL IS CONSTRUCTED. EACH LIFT OF BACKFILL AND FILL SHOULD BE TESTED AND APPROVED PRIOR TO PLACING SUBSEQUENT LIFTS.

7 EARTHWORK NOTES FROM GEOTECHNICAL REPORT  
SCALE: NONE



5 STAIRS DETAIL  
SCALE: NONE



6 HANDRAIL DETAIL  
SCALE: NONE



© 2024 GARVER, LLC  
THIS DOCUMENT, ALONG WITH THE IDEAS AND DESIGNS CONVEYED HEREIN, SHALL BE CONSIDERED INSTRUMENTS OF PROFESSIONAL SERVICE AND ARE PROPERTY OF GARVER, LLC. ANY USE, REPRODUCTION, OR DISTRIBUTION OF THIS DOCUMENT, ALONG WITH THE IDEAS AND DESIGN CONTAINED HEREIN, IS PROHIBITED UNLESS AUTHORIZED IN WRITING BY GARVER, LLC OR EXPLICITLY ALLOWED IN THE GOVERNING PROFESSIONAL SERVICES AGREEMENT FOR THIS WORK.



09/1/24

REV.	DATE	DESCRIPTION	BY

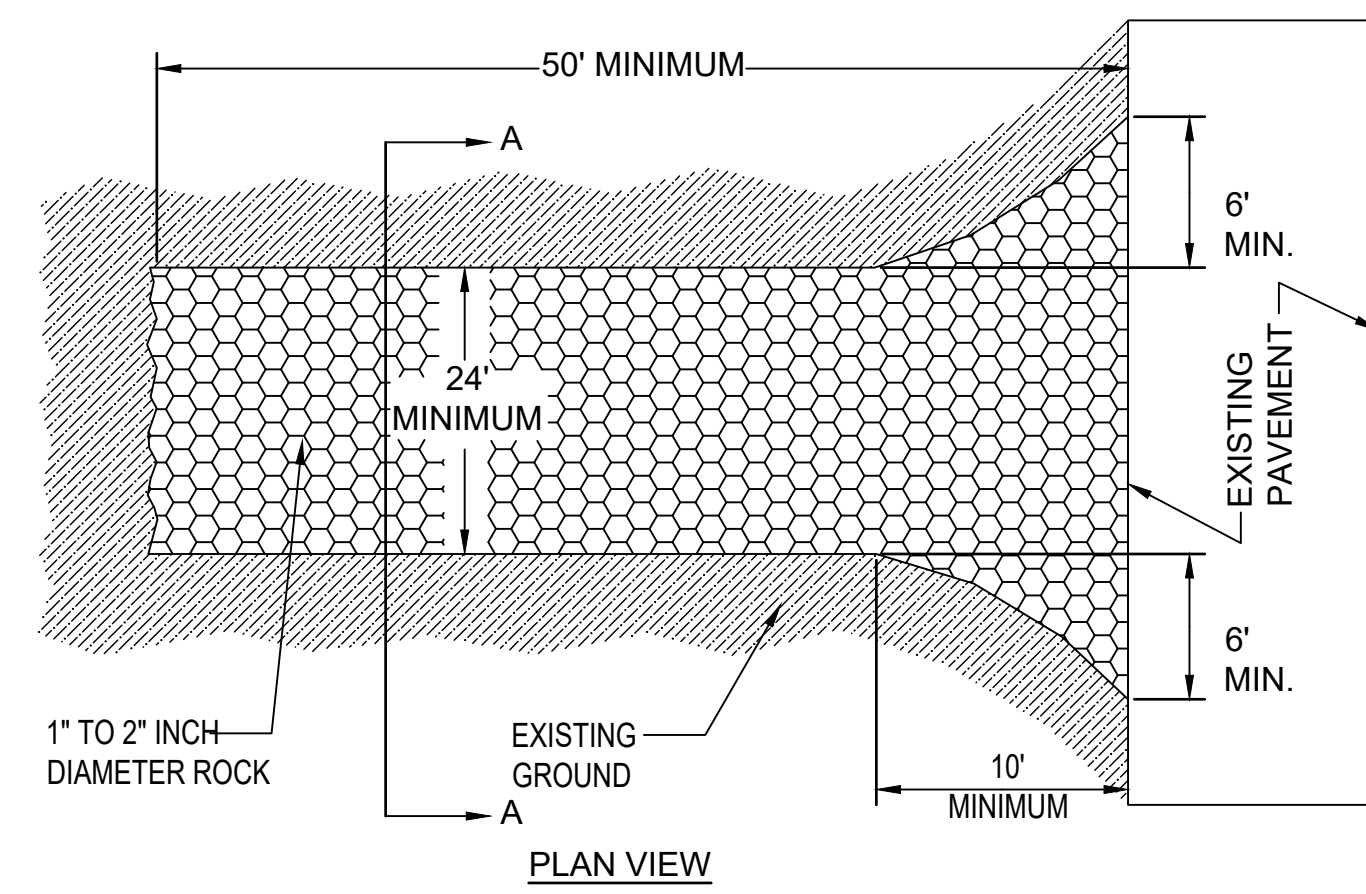
NORTH LITTLE ROCK ELECTRIC  
NORTH LITTLE ROCK AIRPORT  
NORTH LITTLE ROCK, ARKANSAS 72118  
CANOPIES

CIVIL DETAILS

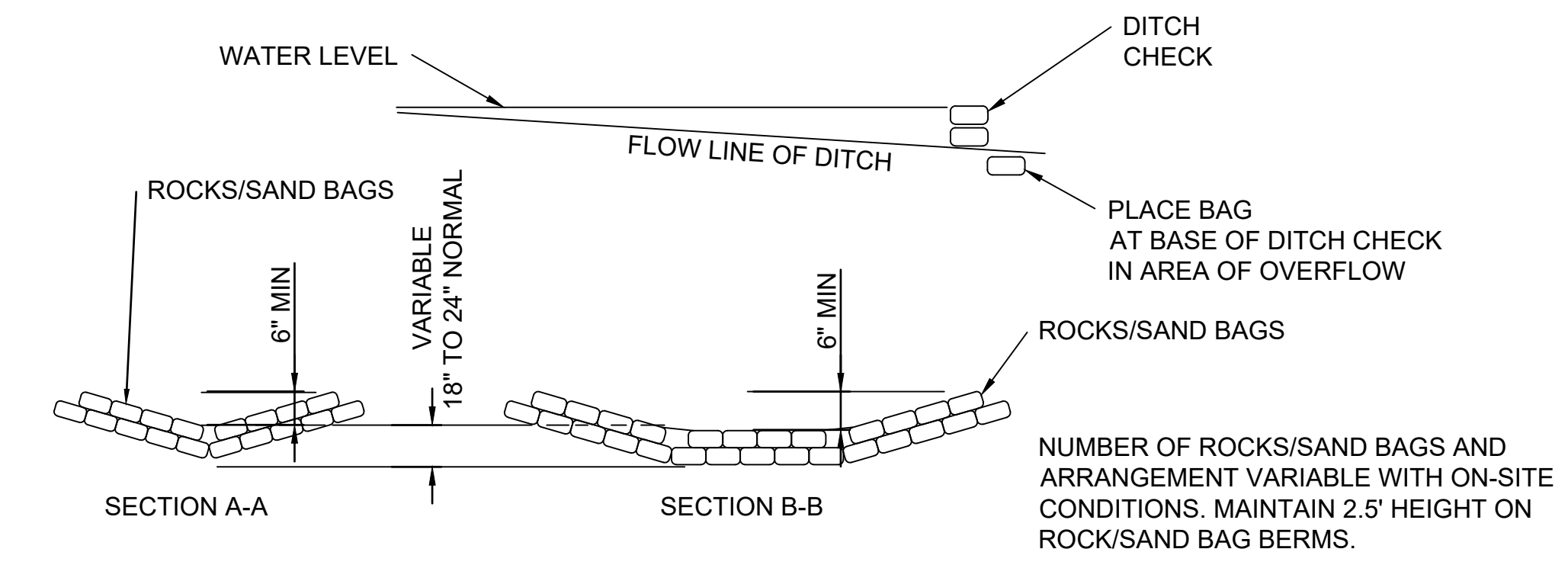
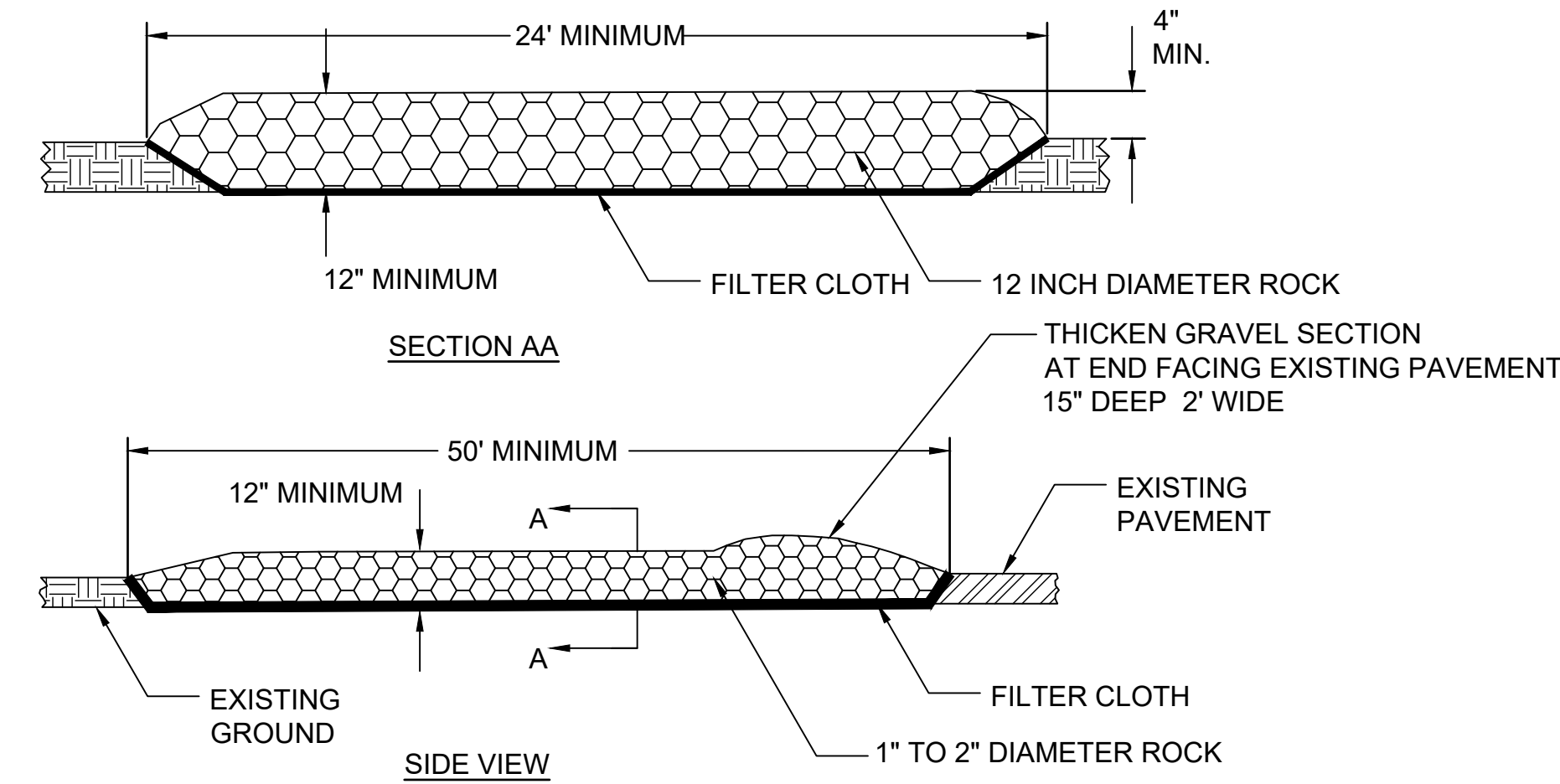
JOB NO.: 2302643  
DATE: 2024.06.11  
DESIGNED BY: TCG  
DRAWN BY: TDB

BAR IS ONE INCH ON ORIGINAL DRAWING  
0 1"  
IF NOT ONE INCH ON THIS SHEET, ADJUST SCALES ACCORDINGLY.

DRAWING NUMBER  
**C-501**

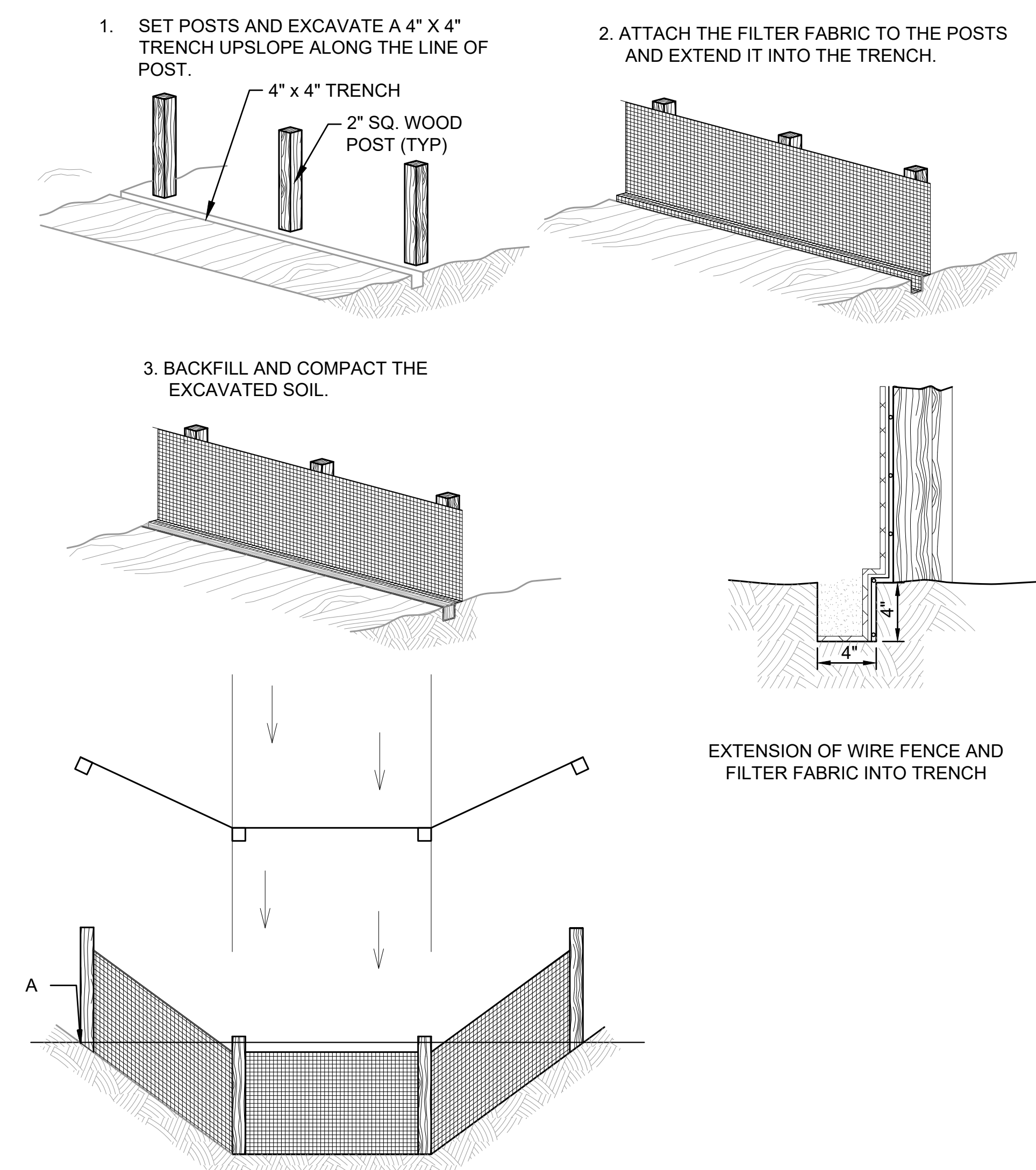


**1 STABILIZED ENTRANCE DRIVE**  
SCALE: NONE



**SEDIMENT BARRIER IN DRAINAGE WAY**  
CONTRACTOR SHALL PLACE SEDIMENT BARRIERS AS LOCATED ON PLAN IMMEDIATELY AFTER CONSTRUCTION OF DRAINAGE SWALES. THE DITCH SHALL BE INSPECTED AFTER EACH RAIN AND REPAIRS MADE AS NEEDED. SEDIMENT SHALL BE REMOVED AND THE BALES RESTORED TO THEIR ORIGINAL DIMENSION WHEN THE SEDIMENT HAS ACCUMULATED TO HALF THE DESIGN DEPTH OF THE TRAP. SEDIMENT REMOVED SHALL BE DEPOSITED IN SUCH A MANNER THAT IT WILL NOT ERODE. SEDIMENT FILTERS SHALL BE REMOVED WHEN ITS DRAINAGE AREA HAS BEEN PROPERLY STABILIZED.

**3 ROCK/SAND BAG DITCH CHECK**  
SCALE: NONE

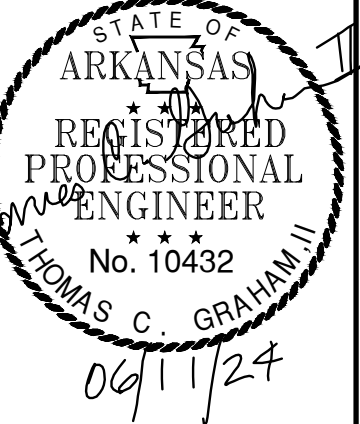


NOTE:  
POINTS "A" SHOULD BE HIGHER THAN POINT "B". PROPER PLACEMENT OF A FILTER BARRIER IN A DRAINAGE WAY

**2 TYPICAL SILT FENCING**  
SCALE: NONE



© 2024 GARVER, LLC  
THIS DOCUMENT, ALONG WITH THE IDEAS AND DESIGNS CONVEYED HEREIN, SHALL BE CONSIDERED INSTRUMENTS OF PROFESSIONAL SERVICE AND ARE PROPERTY OF GARVER, LLC. ANY USE, REPRODUCTION, OR DISTRIBUTION OF THIS DOCUMENT, ALONG WITH THE IDEAS AND DESIGNS CONTAINED HEREIN, IS PROHIBITED UNLESS AUTHORIZED IN WRITING BY GARVER, LLC OR EXPLICITLY ALLOWED IN THE GOVERNING PROFESSIONAL SERVICES AGREEMENT FOR THIS WORK.



BY	DESCRIPTION	DATE	REV.

NORTH LITTLE ROCK ELECTRIC  
NORTH LITTLE ROCK AIRPORT  
NORTH LITTLE ROCK, ARKANSAS 72118  
CANOPIES

EROSION CONTROL  
DETAILS

JOB NO.: 2302643  
DATE: 2024.06.11  
DESIGNED BY: TCG  
DRAWN BY: TDB

BAR IS ONE INCH ON ORIGINAL DRAWING  
0 1"  
IF NOT ONE INCH ON THIS SHEET, ADJUST SCALES ACCORDINGLY.

DRAWING NUMBER  
**C-502**