

ADDENDUM TO NLR WASTEWATER COMMITTEE AGENDA 1/8/2019

DARK HOLLOW INTERCEPTOR ASSESSMENT PROJECT

Staff received bids for the “Dark Hollow Interceptor Assessment Project” on Wednesday, December 19, 2018 at 10:00 AM. The Project consist of condition assessment of large diameter interceptors using digital HDCCTV, Sonar, and Laser Profiling of approximately 1,546 linear feet of 24” RCP, 5,328 linear feet of 30” RCP, and 5,802 linear feet of 36” RCP.

The low bid was submitted by Ace Pipe Cleaning, Inc. headquartered in Kansas City, Missouri in the amount of \$91,513. A copy of the Bid Tabulation is attached.

The 2019 Budget includes \$100,000 for this item.

ACTION REQUESTED:

Authorize staff to award the contract for the Dark Hollow Interceptor Assessment Project to Ace Pipe Cleaning, Inc. in the amount of \$91,513.

Bid Tabulation Sheet
Dark Hollow Interceptor Assessment
North Little Rock Wastewater Utility

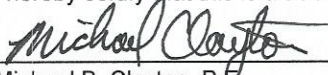
Bid Opening on December 19, 2018 at 10:00 A.M.

Item No.	Description	Units	Quantity	Ace Pipe Cleaning	
				Unit Price	Amount
1	Mobilization	LS	1	\$3,000.00	\$3,000.00
2	Performance and Payment Bonds	LS	1	\$1,350.00	\$1,350.00
3	Certificate of Insurance	LS	1	\$100.00	\$100.00
4	MSI for 24" RCP(Sonar, HDCCTV, and Laser) to include results report as specified	LF	1546	\$6.75	\$10,435.50
5	MSI for 30" RCP(Sonar, HDCCTV, and Laser) to include results report as specified	LF	5328	\$6.75	\$35,964.00
6	MSI for 36" RCP(Sonar, HDCCTV, and Laser) to include results report as specified	LF	5802	\$6.75	\$39,163.50
7	Traffic Control	LS	1	\$1,500.00	\$1,500.00
Totals				\$91,513.00	
Bid Rank					1

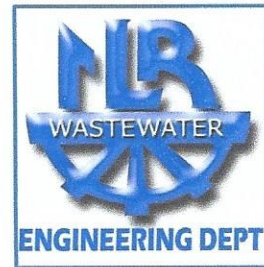
ENGINEER:

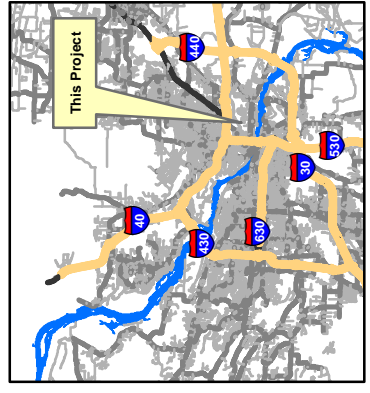
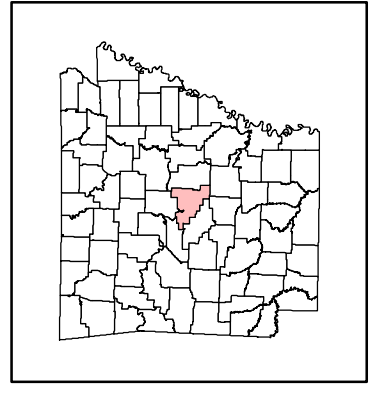
Michael Clayton, P.E.
North Little Rock Wastewater
7400 Baucum Pike
North Little Rock, AR 72117

I hereby certify that this is a true and correct copy of bids received on December 19, 2018.

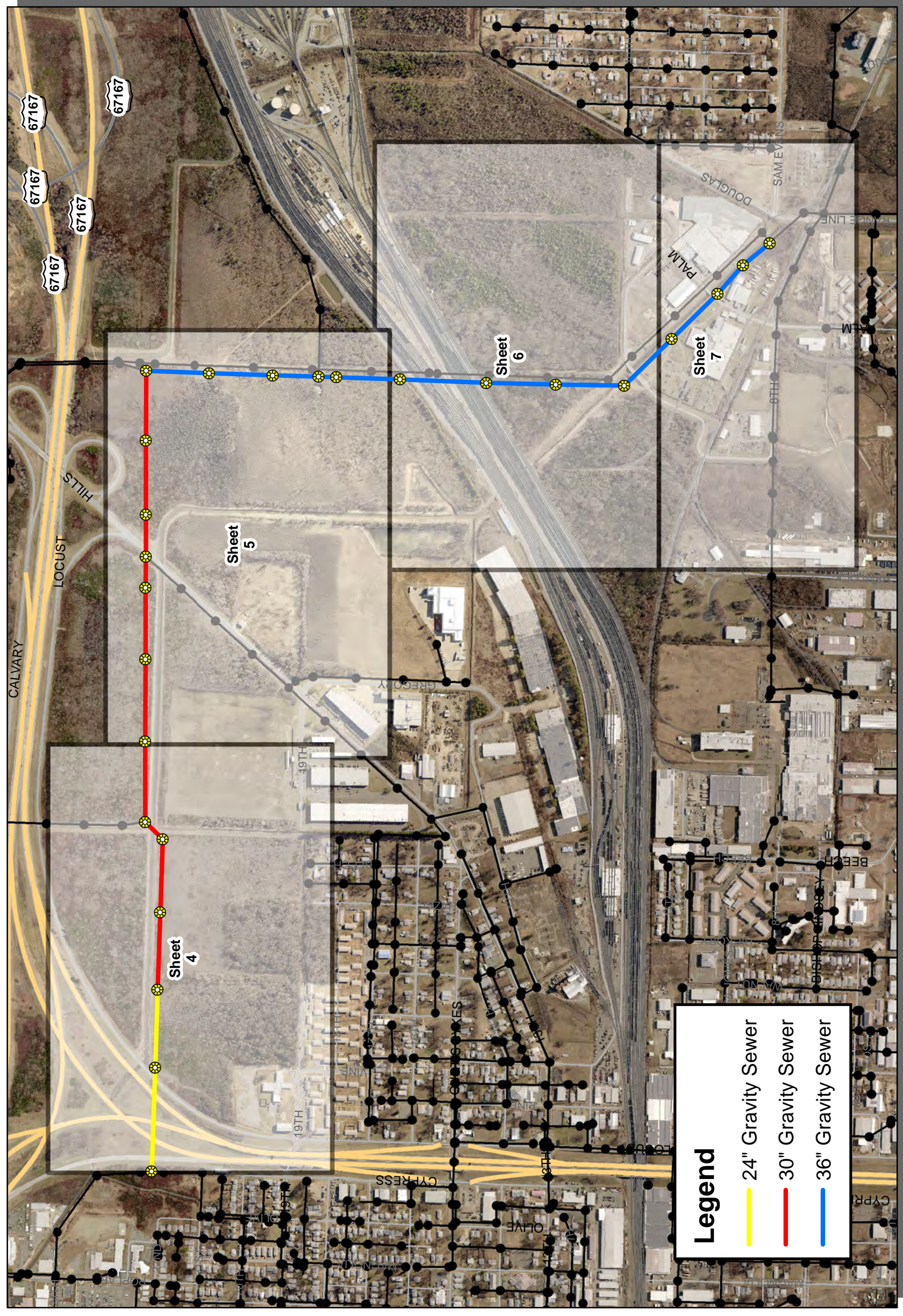


 Michael B. Clayton, P.E.
 North Little Rock Wastewater





NORTH LITTLE ROCK WASTEWATER
DARK HOLLOW INTERCEPTOR ASSESSMENT
NOVEMBER 21, 2018
SHEET 2



Legend

- 24" Gravity Sewer
- 30" Gravity Sewer
- 36" Gravity Sewer